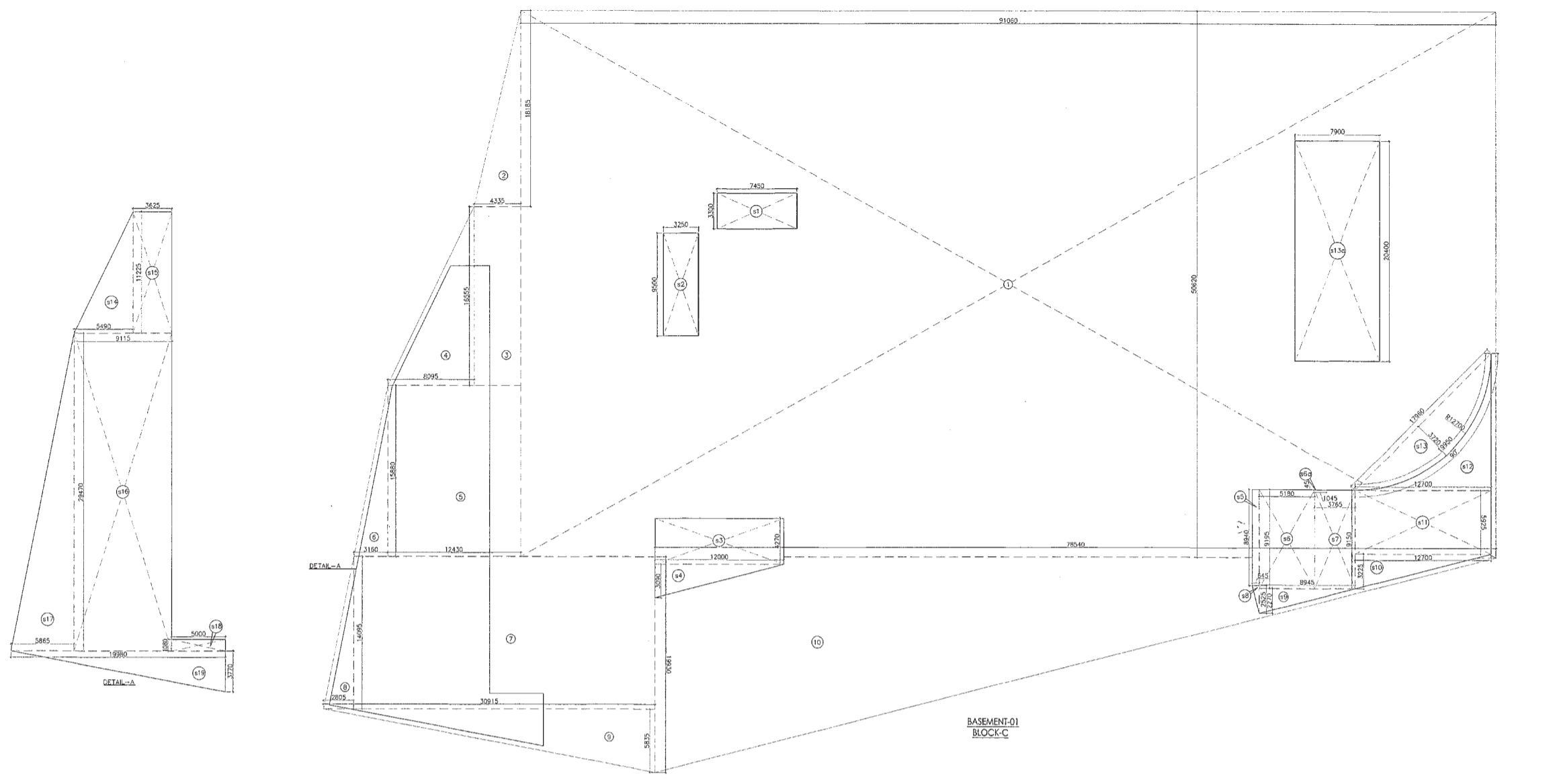


This is a "PROVISIONAL BUILDING PLAN" approved only for the purpose of inviting objections from the general public.

DRG NO. BS-5C

Architect's Seal: Hafeez BPC
 Owner's Seal: DLF BPC
 Other: AD(HQ), DD(HQ), M(DIST), B(A/C)



BASEMENT-01 AREA CALCULATION (BLOCK-C)

GROSS - A	1	18,900	X	18,900	=	357,210	SQM
2	0.5	4,100	X	18,900	=	77,490	SQM
3	0.5	4,100	X	18,900	=	77,490	SQM
4	0.5	8,200	X	18,900	=	154,980	SQM
5	0.5	8,200	X	18,900	=	154,980	SQM
6	0.5	8,200	X	18,900	=	154,980	SQM
7	0.5	8,200	X	18,900	=	154,980	SQM
8	0.5	8,200	X	18,900	=	154,980	SQM
9	0.5	8,200	X	18,900	=	154,980	SQM
10	0.5	8,200	X	18,900	=	154,980	SQM
TOTAL					=	638,874	SQM

DOUBLE HEIGHT OUT-OF-AREA BASEMENT

GROSS - 1	1	18,900	X	18,900	=	357,210	SQM
2	0.5	4,100	X	18,900	=	77,490	SQM
3	0.5	4,100	X	18,900	=	77,490	SQM
4	0.5	8,200	X	18,900	=	154,980	SQM
5	0.5	8,200	X	18,900	=	154,980	SQM
6	0.5	8,200	X	18,900	=	154,980	SQM
7	0.5	8,200	X	18,900	=	154,980	SQM
8	0.5	8,200	X	18,900	=	154,980	SQM
9	0.5	8,200	X	18,900	=	154,980	SQM
10	0.5	8,200	X	18,900	=	154,980	SQM
TOTAL					=	638,874	SQM

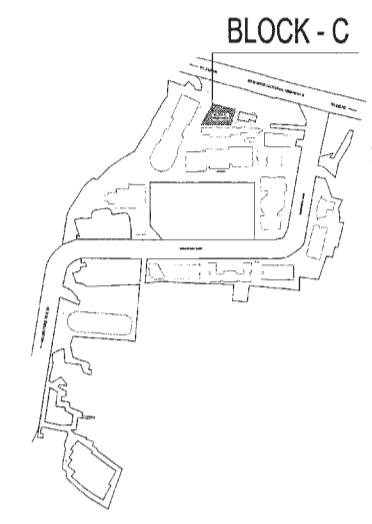
NET AREA OF BASEMENT-01

GROSS - 1	1	18,900	X	18,900	=	357,210	SQM
2	0.5	4,100	X	18,900	=	77,490	SQM
3	0.5	4,100	X	18,900	=	77,490	SQM
4	0.5	8,200	X	18,900	=	154,980	SQM
5	0.5	8,200	X	18,900	=	154,980	SQM
6	0.5	8,200	X	18,900	=	154,980	SQM
7	0.5	8,200	X	18,900	=	154,980	SQM
8	0.5	8,200	X	18,900	=	154,980	SQM
9	0.5	8,200	X	18,900	=	154,980	SQM
10	0.5	8,200	X	18,900	=	154,980	SQM
TOTAL					=	638,874	SQM

NO OF CAR AVAILABLE

OR BAY	1	18,900	/	32	=	590.625	CARS
TOTAL					=	590.625	CARS

KEY PLAN



DLF49936

Architect Hafeez Contractor
 29 Park Street, Bombay 400 023, Tel: 666159

RISMS ARCHITECTS

RSMS ARCHITECTS PVT. LTD.
 69, Naraina Niwas, Bhawanani Kunj,
 (Behind D2), Vasant Kunj,
 New Delhi - 110070.
 Tel.: 011-26898616, 26898617
 www.rsms-arch.com

Project: PROPOSED BUILDING PLANS OF BUILDING - B AND REVISED BUILDING PLANS OF BUILDING - C, D, E, & F IN CYBER CITY UNDER TRANSIT ORIENTED DEVELOPMENT (TOD) POLICY FOR MIX LAND USED COLONY (70% IT/ITES/+30% COMMERCIAL) MEASURING 108.55922 ACRES IN SECTOR 24, 25 & 25-A, GURUGRAM MANESAR URBAN COMPLEX BEING DEVELOPED BY DLF CYBER CITY DEVELOPERS LIMITED

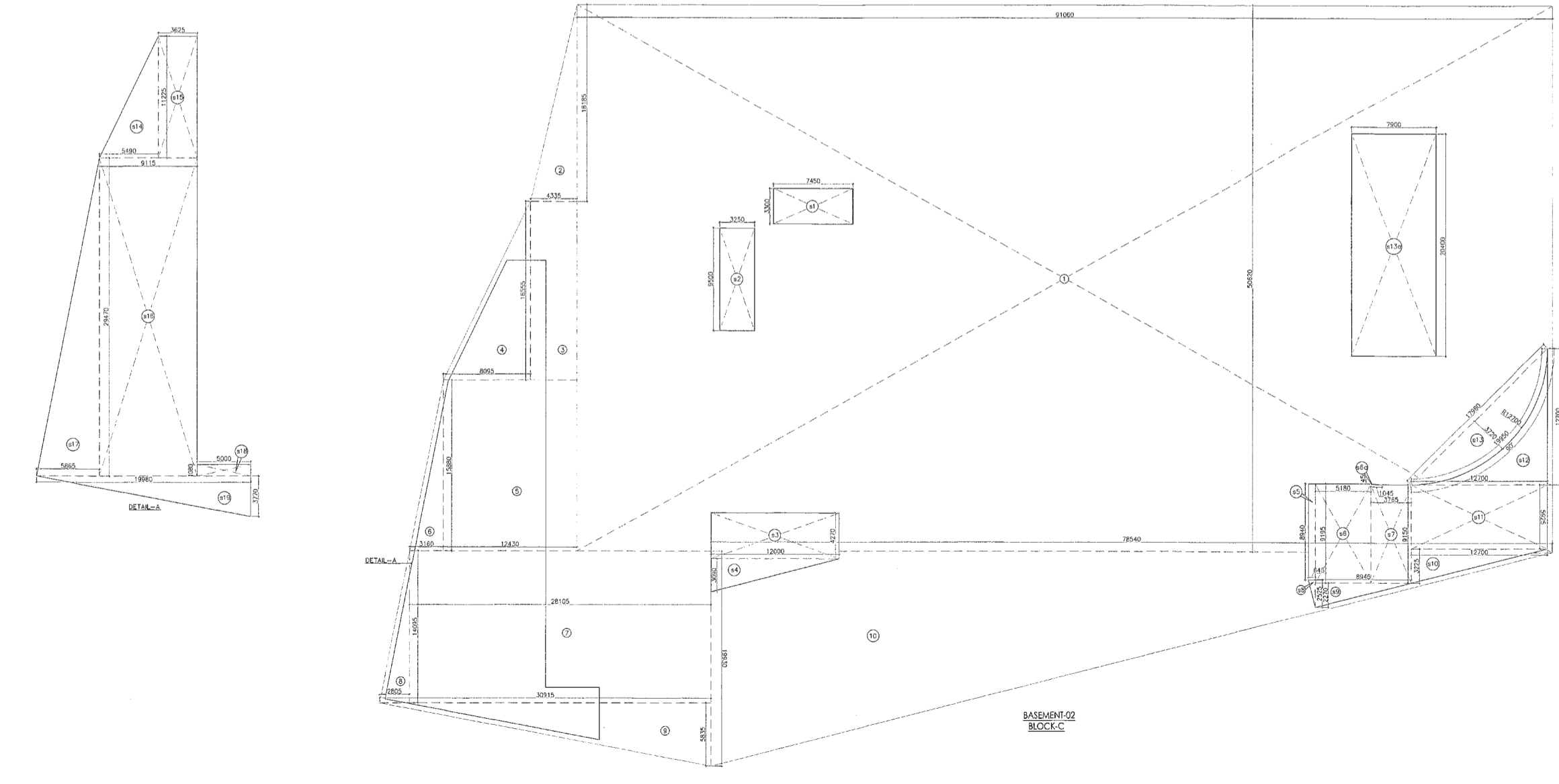
OWNER: DLF Cyber City Developers Ltd.
 10th Floor DLF Gateway Tower,
 DLF Cyber City, Gurugram, Haryana
 Pin: 122002

DRAWING TITLE: AREA CALCULATION BASEMENT-01 & 02 BLOCK-C

REVISION: JOB NO. - DRG NO. BS-5C
 SCALE: 1:100 DATE: 01-04-2021

FILE: DEALT BY: CHECKED BY: APPROVED BY:

ARCHITECT'S SEAL & SIGNATURE: OWNER'S SEAL & SIGNATURE:



BASEMENT-02 AREA CALCULATION (BLOCK-C)

GROSS - A	1	18,900	X	18,900	=	357,210	SQM
2	0.5	4,100	X	18,900	=	77,490	SQM
3	0.5	4,100	X	18,900	=	77,490	SQM
4	0.5	8,200	X	18,900	=	154,980	SQM
5	0.5	8,200	X	18,900	=	154,980	SQM
6	0.5	8,200	X	18,900	=	154,980	SQM
7	0.5	8,200	X	18,900	=	154,980	SQM
8	0.5	8,200	X	18,900	=	154,980	SQM
9	0.5	8,200	X	18,900	=	154,980	SQM
10	0.5	8,200	X	18,900	=	154,980	SQM
TOTAL					=	638,874	SQM

DOUBLE HEIGHT OUT-OF-AREA BASEMENT

GROSS - 1	1	18,900	X	18,900	=	357,210	SQM
2	0.5	4,100	X	18,900	=	77,490	SQM
3	0.5	4,100	X	18,900	=	77,490	SQM
4	0.5	8,200	X	18,900	=	154,980	SQM
5	0.5	8,200	X	18,900	=	154,980	SQM
6	0.5	8,200	X	18,900	=	154,980	SQM
7	0.5	8,200	X	18,900	=	154,980	SQM
8	0.5	8,200	X	18,900	=	154,980	SQM
9	0.5	8,200	X	18,900	=	154,980	SQM
10	0.5	8,200	X	18,900	=	154,980	SQM
TOTAL					=	638,874	SQM

NET AREA OF BASEMENT-02

GROSS - 1	1	18,900	X	18,900	=	357,210	SQM
2	0.5	4,100	X	18,900	=	77,490	SQM
3	0.5	4,100	X	18,900	=	77,490	SQM
4	0.5	8,200	X	18,900	=	154,980	SQM
5	0.5	8,200	X	18,900	=	154,980	SQM
6	0.5	8,200	X	18,900	=	154,980	SQM
7	0.5	8,200	X	18,900	=	154,980	SQM
8	0.5	8,200	X	18,900	=	154,980	SQM
9	0.5	8,200	X	18,900	=	154,980	SQM
10	0.5	8,200	X	18,900	=	154,980	SQM
TOTAL					=	638,874	SQM

NO OF CAR AVAILABLE

OR BAY	1	18,900	/	32	=	590.625	CARS
TOTAL					=	590.625	CARS

ARC AREA GROSS - C

1	1	3.14	X	12,700	X	12,700	X	90	=	1,360	X	0.5	X	12,700	X	12,700	X	17,960	=	45,972	SQM
TOTAL									=	45,972	SQM										