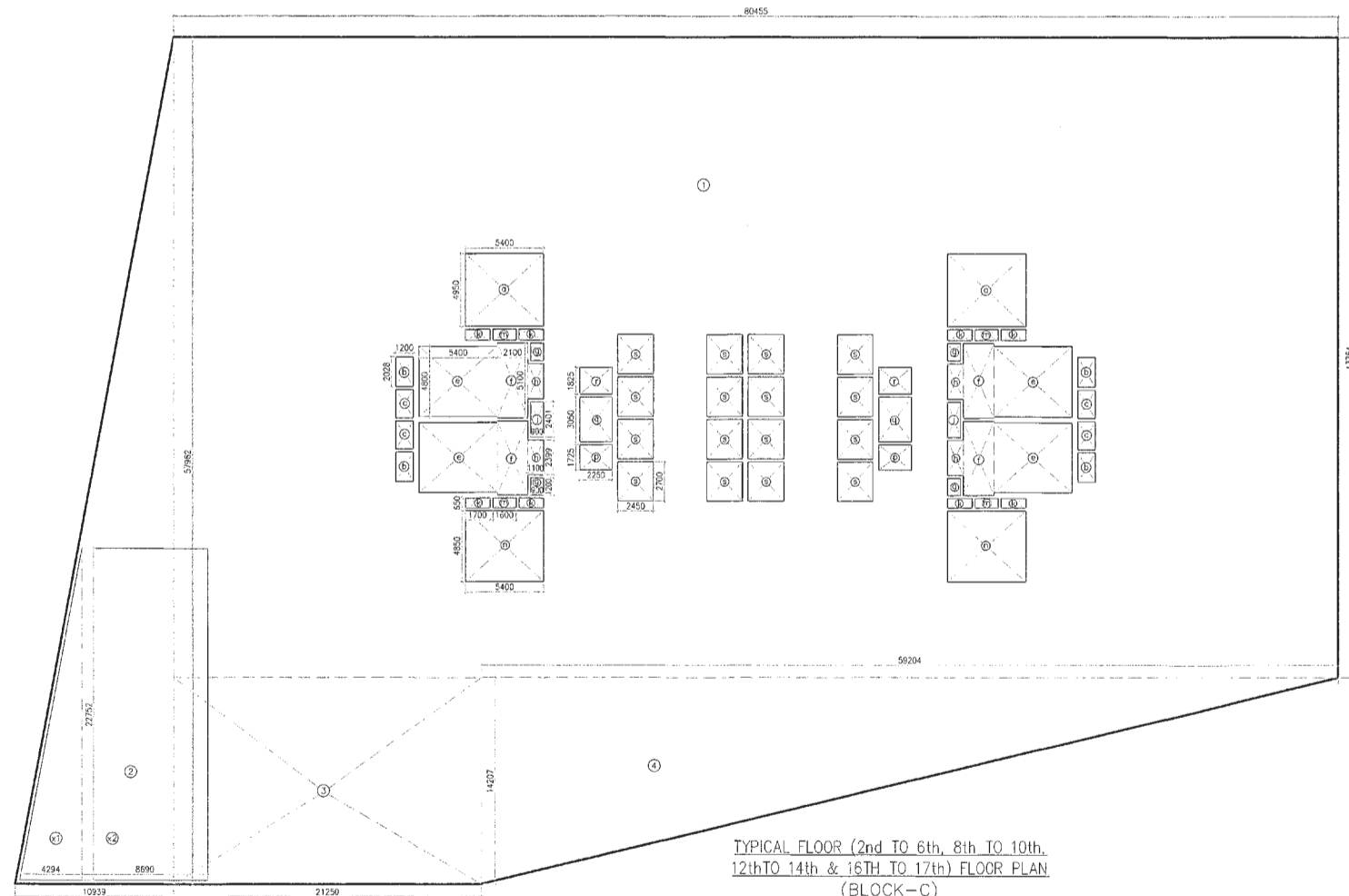


GROUND COVERAGE
BLOCK - C

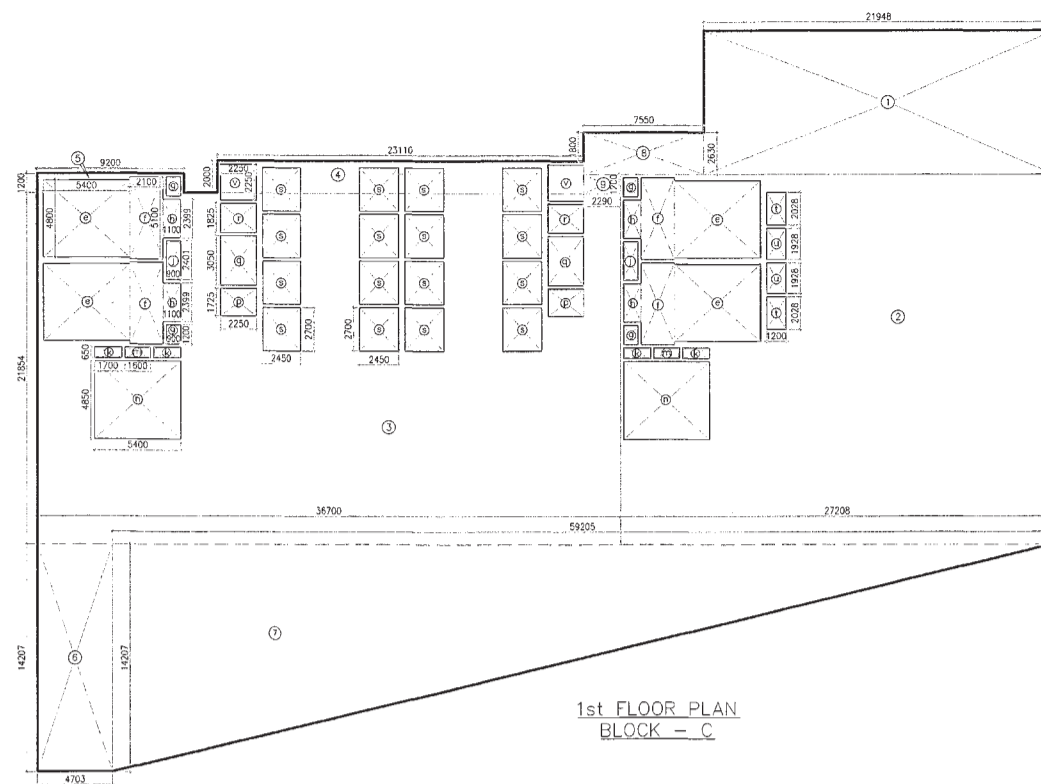
GROUND COVERAGE (BLOCK-C)			
GROSS - A			
1 = 1 X 80.455 X 44.237 =	3550.088	SQM	
2 = 0.5 X 10.939 X 57.962 =	317.023	SQM	
3 = 1 X 21.250 X 13.725 =	291.656	SQM	
4 = 0.5 X 59.294 X 13.725 =	406.287	SQM	
TOTAL	4574.055	SQM	
NON FAR AREA ON STILL FLOOR (BLOCK-C)			
	G. COVERAGE	GROUND FAR GROSS - A	
	4574.055	867.257	
	3716.798	SQM	



TYPICAL FLOOR (2nd TO 6th, 8th TO 10th,
12th TO 14th & 16th TO 17th) FLOOR PLAN
(BLOCK-C)

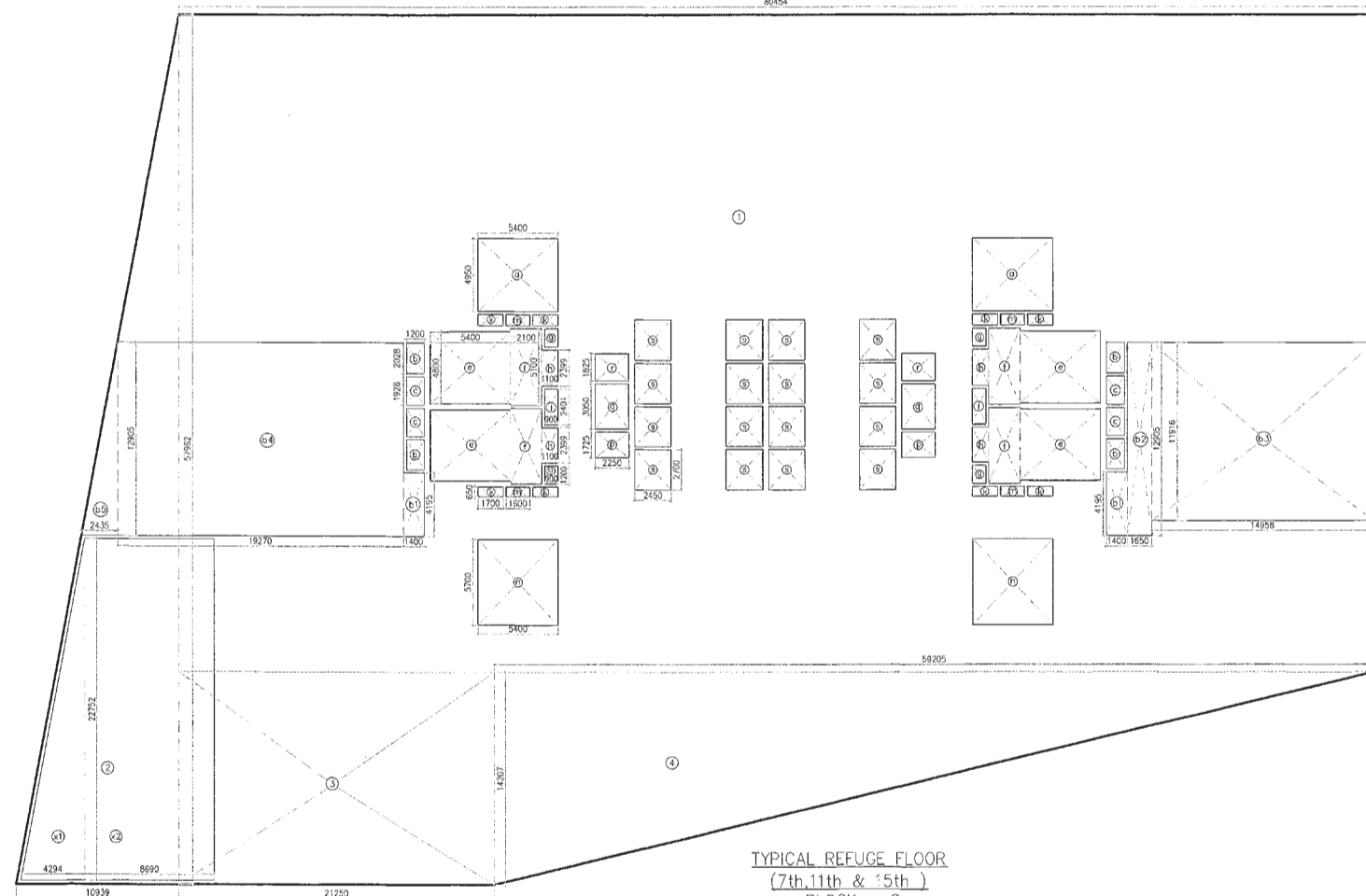
GROUND FLOOR AREA (TOWER-C)			
GROSS - A			
1 = 1 X 5.951 X 1.500 =	10.227	SQM	
2 = 1 X 9.581 X 7.439 =	71.050	SQM	
3 = 1 X 3.300 X 10.800 =	35.640	SQM	
4 = 1 X 2.300 X 8.600 =	19.780	SQM	
5 = 1 X 26.200 X 17.989 =	471.091	SQM	
6 = 1 X 18.400 X 2.350 =	43.240	SQM	
7 = 1 X 5.449 X 1.400 =	7.629	SQM	
8 = 1 X 17.748 X 18.339 =	325.159	SQM	
9 = 1 X 2.800 X 7.439 =	20.841	SQM	
10 = 1 X 3.751 X 10.800 =	40.511	SQM	
TOTAL	867.257	SQM	
TOTAL FAR AREA OF GROUND FLOOR			
	867.257	SQM	

GROUND FLOOR
BLOCK - C



1st FLOOR PLAN
BLOCK - C

1ST FLOOR AREA CALCULATION			
GROSS - A			
1 = 1 X 21.948 X 8.639 =	189.193	SQM	
2 = 1 X 27.298 X 23.955 =	652.280	SQM	
3 = 1 X 30.760 X 31.664 =	974.240	SQM	
4 = 1 X 23.116 X 2.800 =	64.725	SQM	
5 = 1 X 9.200 X 1.200 =	11.040	SQM	
6 = 1 X 4.703 X 14.207 =	66.816	SQM	
7 = 0.5 X 59.294 X 14.207 =	426.563	SQM	
8 = 1 X 7.550 X 2.630 =	19.857	SQM	
9 = 1 X 2.290 X 1.200 =	2.748	SQM	
TOTAL	2192.748	SQM	
GROSS - B			
a = 4 X 5.400 X 4.950 =	107.640	SQM	
b = 4 X 2.100 X 5.100 =	43.080	SQM	
c = 4 X 0.800 X 1.200 =	3.840	SQM	
d = 2 X 1.100 X 2.200 =	4.840	SQM	
e = 2 X 0.900 X 2.401 =	4.322	SQM	
f = 4 X 1.100 X 0.650 =	2.880	SQM	
g = 2 X 2.250 X 1.725 =	7.753	SQM	
h = 2 X 2.250 X 3.055 =	13.725	SQM	
i = 2 X 2.250 X 1.825 =	8.213	SQM	
j = 2 X 2.250 X 1.725 =	7.753	SQM	
k = 16 X 2.450 X 2.700 =	105.840	SQM	
l = 2 X 1.200 X 1.938 =	4.627	SQM	
m = 2 X 2.250 X 2.250 =	10.125	SQM	
TOTAL	379.757	SQM	
FAR AREA OF 1ST FLOOR	GROSS - A - GROSS - B	379.757	SQM
	2192.748	379.757	1812.991
			SQM



TYPICAL REFUGE FLOOR
(7th, 11th, 15th)
BLOCK - C

TYPICAL FLOOR (2nd to 6th, 8th to 10th, 12th to 14th, 16th to 17th) AREA CALCULATION			
GROSS - A			
1 = 1 X 80.455 X 44.237 =	3550.088	SQM	
2 = 0.5 X 10.939 X 57.962 =	317.023	SQM	
3 = 1 X 21.250 X 13.725 =	291.656	SQM	
4 = 0.5 X 59.294 X 13.725 =	406.287	SQM	
TOTAL	4574.055	SQM	
GROSS - B			
a = 2 X 5.400 X 4.950 =	53.460	SQM	
b = 4 X 2.100 X 5.100 =	43.240	SQM	
c = 4 X 1.200 X 1.500 =	9.720	SQM	
d = 2 X 1.100 X 2.200 =	4.840	SQM	
e = 2 X 0.900 X 2.401 =	4.322	SQM	
f = 4 X 1.100 X 0.650 =	2.880	SQM	
g = 2 X 2.250 X 1.725 =	7.753	SQM	
h = 2 X 2.250 X 3.055 =	13.725	SQM	
i = 2 X 2.250 X 1.825 =	8.213	SQM	
j = 2 X 2.250 X 1.725 =	7.753	SQM	
k = 16 X 2.450 X 2.700 =	105.840	SQM	
l = 2 X 1.200 X 1.938 =	4.627	SQM	
m = 2 X 2.250 X 2.250 =	10.125	SQM	
TOTAL	388.465	SQM	
FAR AREA OF TYPICAL FLOOR (2nd to 6th, 8th to 10th, 12th to 14th, 16th to 17th)	GROSS - A - GROSS - B	4185.590	SQM
	4574.055	388.465	4185.590
			SQM

TYPICAL REFUGE FLOOR (7th, 11th, 15th) AREA CALCULATION			
GROSS - A			
1 = 1 X 69.454 X 43.754 =	3020.184	SQM	
2 = 0.5 X 10.939 X 57.962 =	317.023	SQM	
3 = 1 X 21.250 X 14.207 =	301.899	SQM	
4 = 0.5 X 59.294 X 14.207 =	426.563	SQM	
TOTAL	4599.669	SQM	
GROSS - B			
a = 2 X 5.400 X 4.950 =	53.460	SQM	
b = 4 X 2.100 X 5.100 =	43.240	SQM	
b1 = 2 X 1.400 X 4.195 =	11.746	SQM	
b2 = 1 X 1.650 X 12.905 =	21.283	SQM	
b3 = 1 X 14.858 X 11.918 =	177.240	SQM	
b4 = 1 X 19.270 X 12.905 =	248.679	SQM	
b5 = 0.5 X 2.435 X 12.905 =	15.712	SQM	
c = 4 X 1.200 X 1.500 =	9.240	SQM	
d = 4 X 2.400 X 4.803 =	46.464	SQM	
e = 4 X 2.100 X 5.100 =	43.080	SQM	
f = 4 X 1.100 X 0.650 =	2.880	SQM	
g = 2 X 2.250 X 1.725 =	7.753	SQM	
h = 2 X 2.250 X 3.055 =	13.725	SQM	
i = 2 X 2.250 X 1.825 =	8.213	SQM	
j = 2 X 2.250 X 1.725 =	7.753	SQM	
k = 16 X 2.450 X 2.700 =	105.840	SQM	
l = 2 X 1.200 X 1.938 =	4.627	SQM	
m = 2 X 2.250 X 2.250 =	10.125	SQM	
n1 = 0.5 X 4.294 X 22.752 =	48.849	SQM	
n2 = 1 X 8.692 X 22.752 =	197.715	SQM	
TOTAL	1180.234	SQM	
FAR AREA OF TYPICAL (REFUGE) FLOOR (7th, 11th, 15th)	GROSS - A - GROSS - B	3419.435	SQM
	4599.669	1180.234	3419.435
			SQM

This is a "PROVISIONAL BUILDING PLAN" approved only for the purpose of inviting objections from the general public

DRG NO.

BC-06A

Project Manager: M. K. BPC
 Chief Architect: M. K. BPC
 Architect: M. K. BPC
 Designer: M. K. BPC
 Checker: M. K. BPC
 Approver: M. K. BPC

3D PA AP

DLF49945

Architect
 Hafeez Contractor
 29 Bank Street, Bombay 400 013, Tel: 26367000

RSMS ARCHITECTS PVT. LTD.

69, Nara Niwas Bhawani Kunj (Behind D2), Vasant Kunj, New Delhi-110070. Tel.: 011-26898616, 26898617 www.rsms-arch.com

Project: PROPOSED BUILDING PLANS OF BUILDING - B AND REVISED BUILDING PLANS OF BUILDING-C, D, E, & F IN CYBER CITY UNDER TRANSIT ORIENTED DEVELOPMENT (TOD) POLICY FOR MIX LAND USED COLONY (70% IT/ITES/+30% COMMERCIAL) MEASURING 108.55922 ACRES IN SECTOR 24, 25 & 25-A, GURUGRAM MANESAR URBAN COMPLEX BEING DEVELOPED BY DLF CYBER CITY DEVELOPERS LIMITED

OWNER: DLF Cyber City Developers Ltd. 10th Floor DLF Gateway Tower, DLF Cyber City, Gurugram, Haryana Pin: 122032

DRAWING TITLE: AREA CALCULATION OF GROUND COVERAGE GROUND TO 17TH FLOOR BLOCK-C

REVISION: JOB NO: DRG NO. BC-06A NORTH: DATE: 01-04-2021 SCALE: 1:200

FILE: DEALT BY: CHECKED BY: APPROVED BY:

ARCHITECT'S SEAL & SIGNATURE: OWNER'S SEAL & SIGNATURE: