

This is a "PROVISIONAL BUILDING PLAN" approved only for the purpose of inviting objections from the general public.

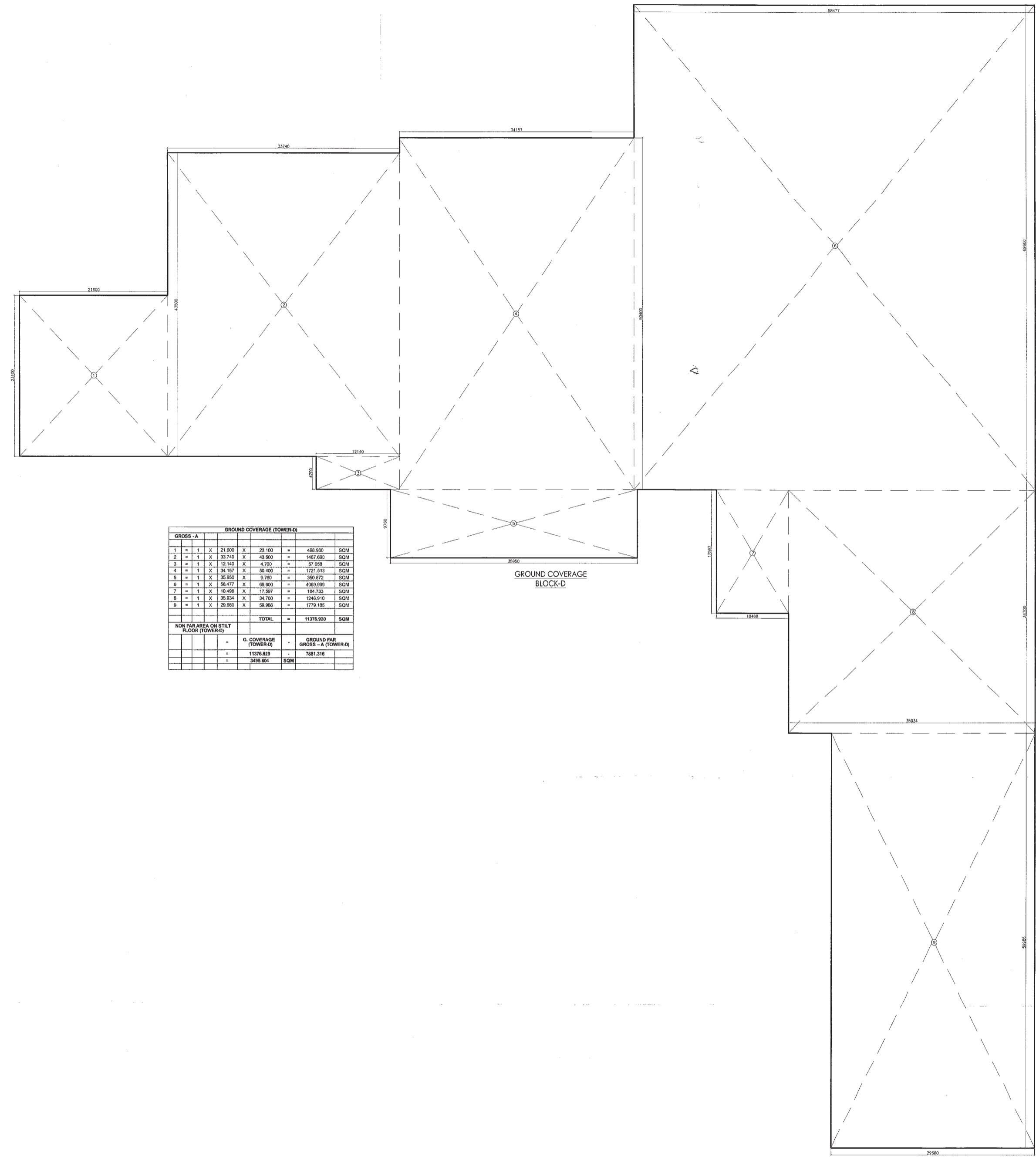
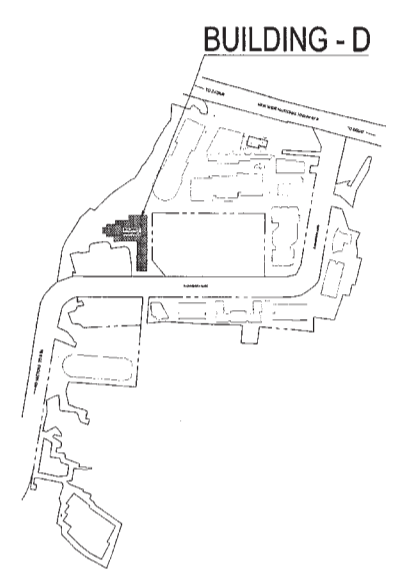
(Signatures)
 Member Secretary BPC
 Member BPC
 Member BPC

(Signatures)
 Ram Anwar Bansi AD(17)
 DDA (17) Member BPC

(Signatures)
 -S.B.
 P.R.
 ATP

DLF49975

KEY PLAN



GROUND COVERAGE (TOWER-D)										
GROSS - A										
1	=	1	X	21.600	X	23.100	=	498.960	SQM	
2	=	1	X	33.740	X	43.900	=	1467.692	SQM	
3	=	1	X	12.140	X	4.700	=	57.058	SQM	
4	=	1	X	34.167	X	50.430	=	1721.613	SQM	
5	=	1	X	35.650	X	9.750	=	359.972	SQM	
6	=	1	X	58.477	X	69.600	=	4065.699	SQM	
7	=	1	X	10.458	X	17.297	=	184.733	SQM	
8	=	1	X	33.634	X	34.700	=	1265.910	SQM	
9	=	1	X	20.660	X	59.966	=	1229.185	SQM	
TOTAL								=	11376.920	SQM
NON FAR AREA ON STLT FLOOR (TOWER-D)										
						G. COVERAGE (TOWER-D)		GROUND FAR GROSS - A (TOWER-D)		
						= 11376.920		= 7681.316		
						= 3495.604		SQM		

Architect
Hafeez Contractor
 29 Bank Street, Bombay 400 023 Tel:664928

RISIMIS ARCHITECTS

RSMS ARCHITECTS PVT. LTD.
 69, Nara Niwas Bhawani Kunj
 (Behind D2), Vasant Kunj,
 New Delhi-110070.
 Tel.: 011-26898616, 26898617
 www.rsms-arch.com

Project:
 PROPOSED BUILDING PLANS OF BUILDING - B AND REVISED BUILDING PLANS OF BUILDING - C, D, E, & F IN CYBER CITY UNDER TRANSIT ORIENTED DEVELOPMENT (TOD) POLICY FOR MIX LAND USED COLONY (70% IT/ITES/+30% COMMERCIAL) MEASURING 108.55922 ACRES IN SECTOR 24, 25 & 25-A, GURUGRAM MANESAR URBAN COMPLEX BEING DEVELOPED BY DLF CYBER CITY DEVELOPERS LIMITED

OWNER:
DLF DLF Cyber City Developers Ltd.
 10th Floor DLF Gateway Tower,
 DLF Cyber City, Gurugram, Haryana
 Pin: 122002

DRAWING TITLE: -
 AREA CALCULATION OF GROUND COVERAGE BLOCK-D

REVISION	JOB NO. -	DRG NO. -	NORTH -
		BD-12	
	SCALE: - 1:200	DATE: -	
		01-04-2021	
FILE: -	DEALT BY: -	CHECKED BY: -	APPROVED BY: -
ARCHITECT'S SEAL & SIGNATURE		OWNER'S SEAL & SIGNATURE	

(Signatures and Seals)