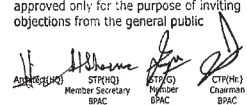


This is a "PROVISIONAL BUILDING PLAN" approved only for the purpose of inviting objections from the general public.


 CHIEF SECRETARY
 CHIEF ENGINEER
 CHIEF ARCHITECT

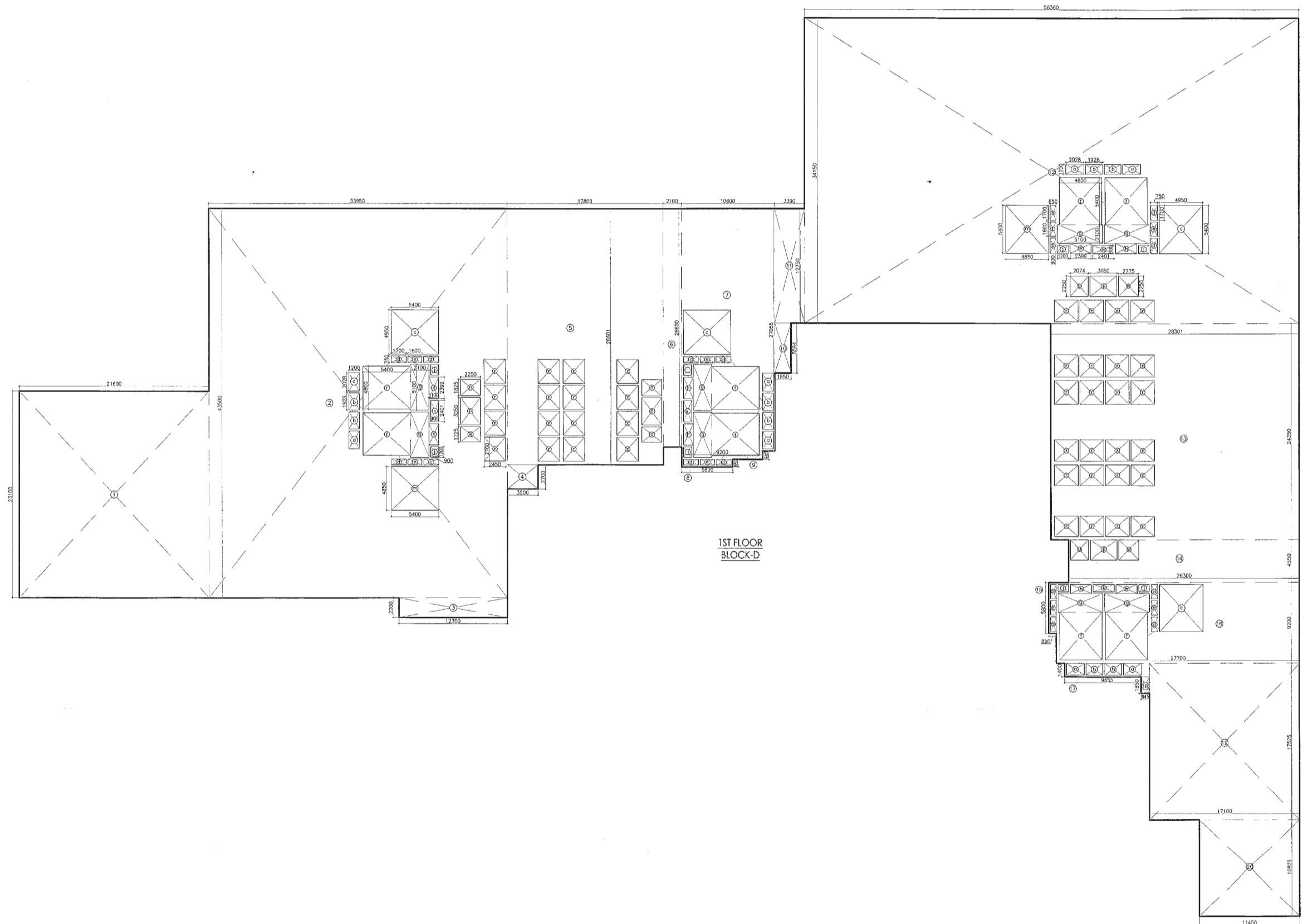
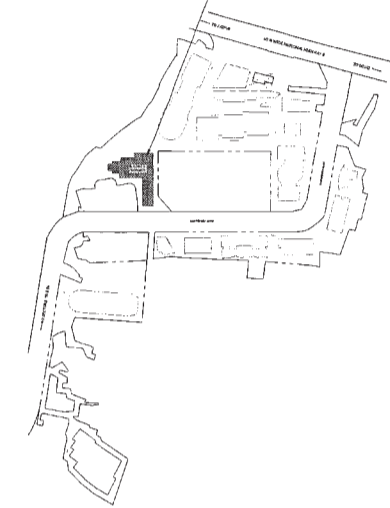
ADHOC MEMBER
 MEMBER

P.A.
 A.P.

DLF49977

KEY PLAN

BUILDING - D



1 ST FLOOR AREA CALCULATION (TOWER-D)			
GROSS - A			
1	= 1 X	21.600 X 23.300	= 503.280 SQM
2	= 1 X	33.900 X 43.500	= 1473.525 SQM
2a	= 1 X	0.212 X 0.958	= 0.203 SQM
3	= 1 X	12.350 X 2.200	= 27.170 SQM
4	= 1 X	3.900 X 2.700	= 10.530 SQM
5	= 1 X	17.800 X 28.600	= 508.080 SQM
6	= 1 X	2.100 X 28.000	= 58.800 SQM
7	= 1 X	10.600 X 27.000	= 286.200 SQM
8	= 1 X	6.200 X 0.800	= 4.960 SQM
9	= 1 X	6.200 X 0.945	= 5.864 SQM
10	= 1 X	1.800 X 0.900	= 1.620 SQM
11	= 1 X	3.300 X 12.700	= 41.910 SQM
12	= 1 X	56.300 X 34.100	= 1924.034 SQM
13	= 1 X	25.200 X 24.900	= 627.480 SQM
14	= 1 X	25.300 X 4.500	= 113.850 SQM
15	= 1 X	3.900 X 1.800	= 6.990 SQM
16	= 1 X	27.700 X 8.200	= 227.140 SQM
17	= 1 X	3.000 X 1.400	= 4.200 SQM
18	= 1 X	0.945 X 1.800	= 1.701 SQM
19	= 1 X	11.100 X 17.500	= 194.250 SQM
20	= 1 X	11.400 X 10.825	= 123.345 SQM
TOTAL			= 6363.700 SQM
GROSS - B			
a	= 8 X	1.200 X 2.028	= 16.224 SQM
b	= 8 X	1.200 X 1.808	= 14.502 SQM
c	= 4 X	4.850 X 4.400	= 17.060 SQM
d	= 12 X	1.700 X 0.750	= 15.300 SQM
e	= 8 X	3.400 X 4.800	= 130.560 SQM
f	= 8 X	2.100 X 1.100	= 18.720 SQM
g	= 8 X	1.100 X 2.300	= 20.240 SQM
h	= 8 X	0.900 X 1.200	= 8.640 SQM
i	= 4 X	3.000 X 2.400	= 28.800 SQM
m	= 2 X	4.800 X 8.400	= 80.640 SQM
n	= 2 X	2.250 X 1.800	= 8.100 SQM
p	= 4 X	2.250 X 3.000	= 27.000 SQM
q	= 2 X	2.250 X 1.725	= 7.725 SQM
r	= 40 X	2.450 X 2.700	= 264.600 SQM
s	= 4 X	0.650 X 1.700	= 4.420 SQM
t	= 2 X	0.650 X 1.800	= 2.340 SQM
u	= 2 X	2.074 X 2.200	= 9.133 SQM
w	= 2 X	2.275 X 2.250	= 10.219 SQM
TOTAL			= 665.356 SQM
NET AREA OF 1 ST FLOOR (TOWER-D)			
GROSS - A			6363.700
GROSS - B			665.356
NET AREA			5698.344 SQM

Architect
Hafeez Contractor
 27, Bank Street, Bombay 400 023, Tel: 2647920

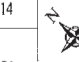


RSMS ARCHITECTS PVT. LTD.
 69, Nora Niwas Bhawani Kunj
 (Behind D2), Vasant Kunj,
 New Delhi-110070.
 Tel.: 011-26898616, 26898617
 www.rsms-arch.com

Project:
 PROPOSED BUILDING PLANS OF
 BUILDING - B AND REVISED BUILDING PLANS
 OF BUILDING - C, D, E, & F IN CYBER CITY
 UNDER TRANSIT ORIENTED DEVELOPMENT
 (TOD) POLICY FOR MIX LAND USED
 COLONY (70% IT/ITES + 30% COMMERCIAL)
 MEASURING 108.55922 ACRES IN SECTOR 24,
 25 & 25-A, GURUGRAM MANESAR URBAN
 COMPLEX BEING DEVELOPED BY
 DLF CYBER CITY DEVELOPERS LIMITED

OWNER: DLF Cyber City Developers Ltd.
 10th Floor DLF Gateway Tower,
 DLF Cyber City, Gurugram, Haryana
 Pin: 122002

DRAWING TITLE: AREA CALCULATION OF 1ST FLOOR BLOCK-D

REVISION	JOB NO. -	DRG NO. -	NORTH -
	SCALE: - 1:200	DATE: -	
		01-04-2021	

FILE: - DEALT BY: - CHECKED BY: - APPROVED BY: -

ARCHITECT'S SEAL & SIGNATURE
 OWNER'S SEAL & SIGNATURE