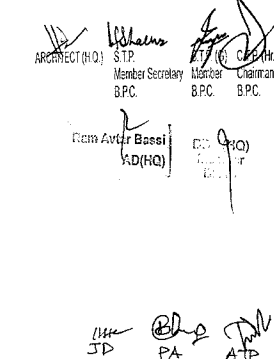
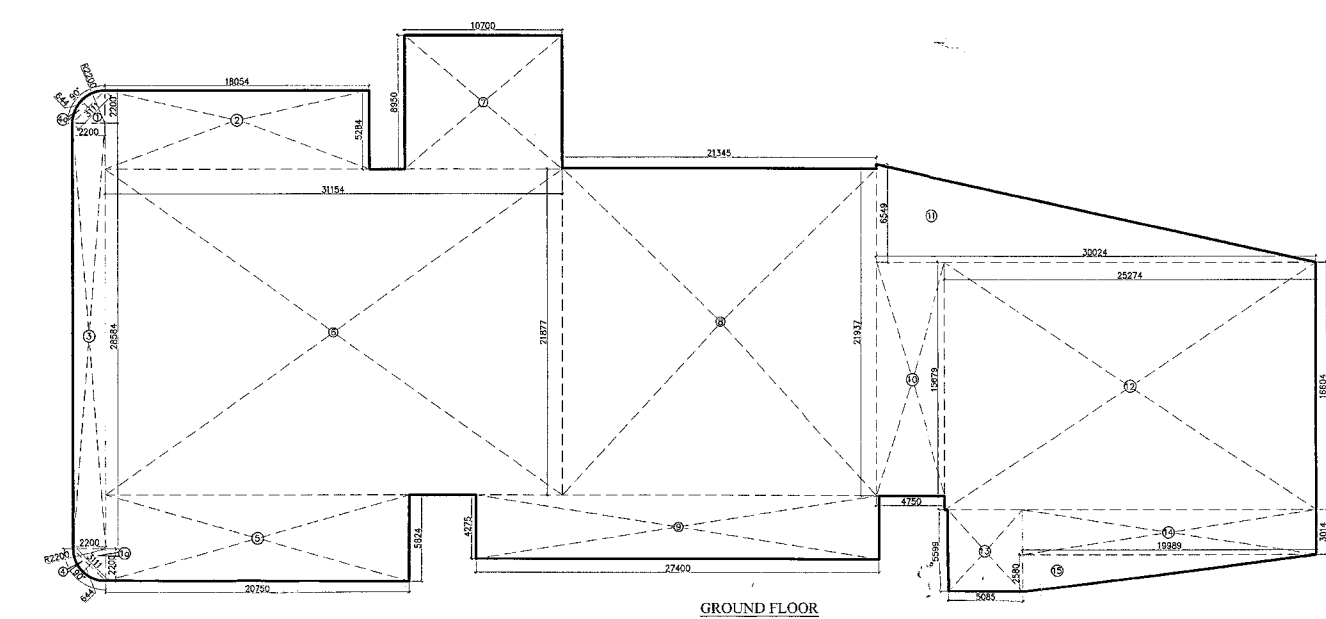
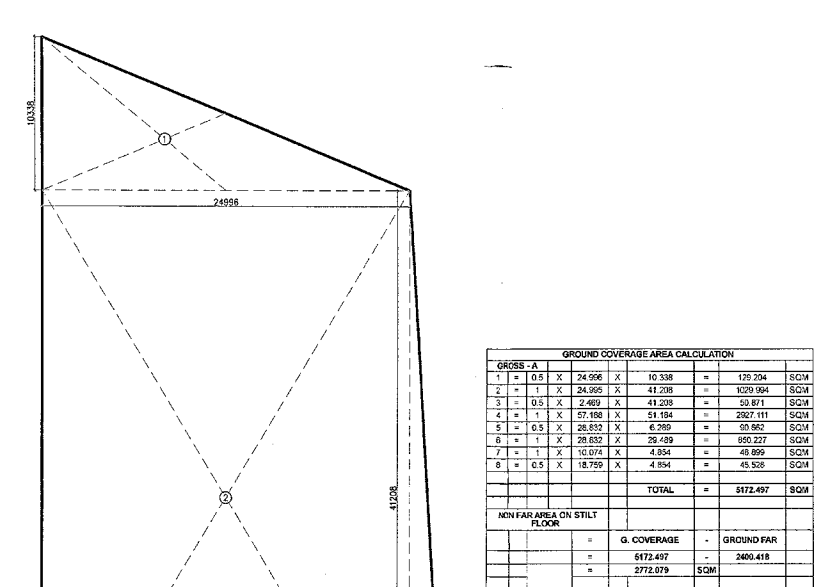


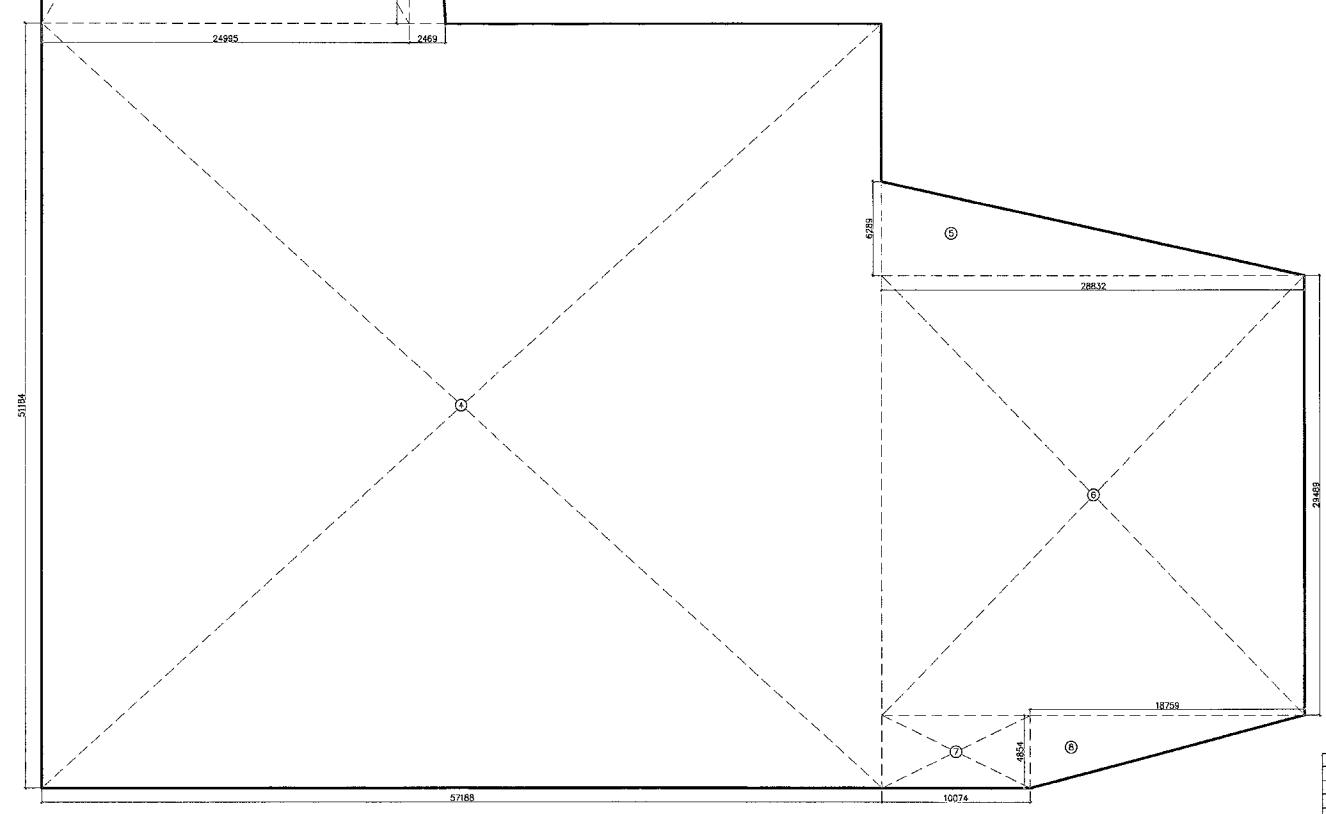
This is a "PROVISIONAL BUILDING PLAN" approved only for the purpose of inviting objections from the general public.

DRG NO. BE-08

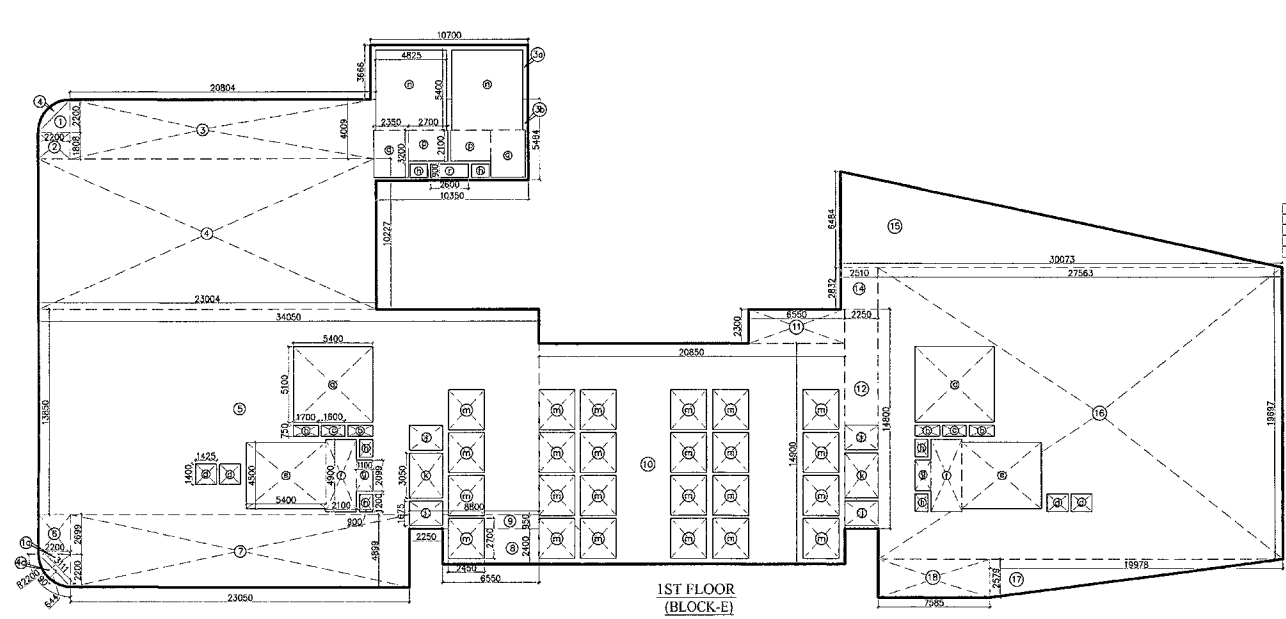

 PROJECT (D) STP
 Member Secretary
 BPC
 Chairman
 BPC
 BPC
 From: Bansi V.D(HQ)
 JP PA ATP



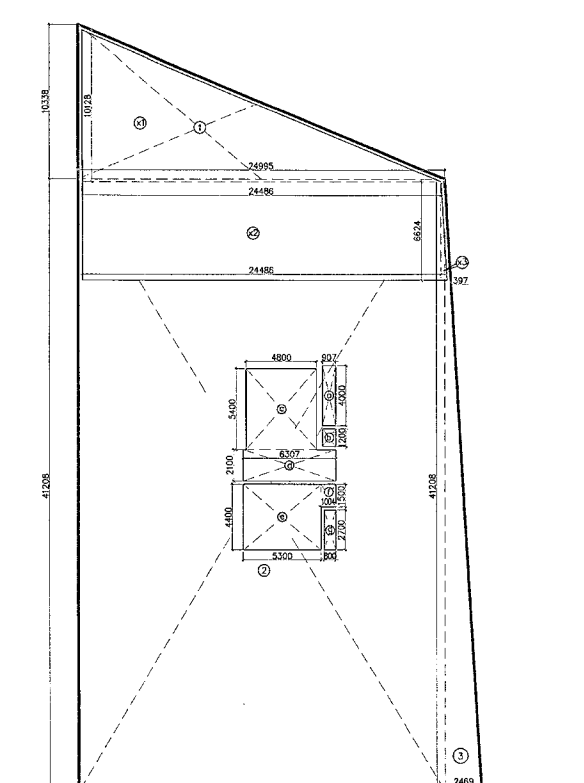
GROUND FLOOR			
GROSS - A			
1 = 1 X 24.006 X 10.338	=	247.324	SQ.M
2 = 1 X 24.006 X 41.238	=	990.994	SQ.M
3 = 1 X 24.006 X 41.238	=	990.994	SQ.M
4 = 1 X 57.188 X 51.154	=	2927.111	SQ.M
5 = 1 X 1.5 X 24.006 X 2.300	=	81.018	SQ.M
6 = 1 X 28.802 X 32.439	=	934.227	SQ.M
7 = 1 X 12.001 X 4.150	=	49.802	SQ.M
8 = 1 X 18.709 X 4.894	=	91.538	SQ.M
TOTAL	=	6172.491	SQ.M
NET FLOOR AREA ON STILT FLOOR			
= G. COVERAGE	-	GROUND FAR	
=		2400.418	
=		5772.079	SQM



MEZZANINE FLOOR AREA CALCULATION			
GROSS - A			
1 = 1 X 0.5 X 2.200 X 2.200	=	2.420	SQ.M
2 = 1 X 0.5 X 2.200 X 2.200	=	2.420	SQ.M
3 = 1 X 2.200 X 1.800	=	3.960	SQ.M
4 = 1 X 2.200 X 1.800	=	3.960	SQ.M
5 = 1 X 10.200 X 5.400	=	55.750	SQ.M
6 = 1 X 2.200 X 10.200	=	22.440	SQ.M
7 = 1 X 34.000 X 13.800	=	469.560	SQ.M
8 = 1 X 2.200 X 2.200	=	4.840	SQ.M
9 = 1 X 2.200 X 2.200	=	4.840	SQ.M
10 = 1 X 2.200 X 2.200	=	4.840	SQ.M
11 = 1 X 2.200 X 2.200	=	4.840	SQ.M
12 = 1 X 2.200 X 2.200	=	4.840	SQ.M
13 = 1 X 2.200 X 2.200	=	4.840	SQ.M
14 = 1 X 2.200 X 2.200	=	4.840	SQ.M
15 = 1 X 30.000 X 4.800	=	144.000	SQ.M
16 = 1 X 27.500 X 19.800	=	544.500	SQ.M
17 = 1 X 19.500 X 2.200	=	42.900	SQ.M
18 = 1 X 7.500 X 2.200	=	16.500	SQ.M
TOTAL	=	2089.871	SQ.M
GROSS - B			
a = 2 X 5.400 X 5.130	=	55.002	SQ.M
b = 4 X 1.700 X 0.750	=	5.100	SQ.M
c = 2 X 1.800 X 0.750	=	2.700	SQ.M
d = 4 X 1.420 X 1.420	=	8.096	SQ.M
e = 2 X 5.400 X 4.500	=	48.600	SQ.M
f = 2 X 2.200 X 4.500	=	19.800	SQ.M
g = 4 X 0.900 X 1.200	=	4.320	SQ.M
h = 4 X 2.200 X 1.675	=	14.875	SQ.M
i = 2 X 2.200 X 3.000	=	13.200	SQ.M
j = 24 X 2.400 X 2.700	=	159.750	SQ.M
TOTAL	=	336.228	SQ.M
FAR AREA OF MEZZANINE FLOOR	=	2089.871	SQM
= GROSS - A	+ GROSS - B		
=		2089.871	
=		336.228	
=		2454.099	SQM



FAR AREA OF MEZZANINE FLOOR			
GROSS - A			
1 = 1 X 0.5 X 2.200 X 2.200	=	2.420	SQ.M
2 = 1 X 0.5 X 2.200 X 2.200	=	2.420	SQ.M
3 = 1 X 2.200 X 1.800	=	3.960	SQ.M
4 = 1 X 2.200 X 1.800	=	3.960	SQ.M
5 = 1 X 10.200 X 5.400	=	55.750	SQ.M
6 = 1 X 2.200 X 10.200	=	22.440	SQ.M
7 = 1 X 34.000 X 13.800	=	469.560	SQ.M
8 = 1 X 2.200 X 2.200	=	4.840	SQ.M
9 = 1 X 2.200 X 2.200	=	4.840	SQ.M
10 = 1 X 2.200 X 2.200	=	4.840	SQ.M
11 = 1 X 2.200 X 2.200	=	4.840	SQ.M
12 = 1 X 2.200 X 2.200	=	4.840	SQ.M
13 = 1 X 2.200 X 2.200	=	4.840	SQ.M
14 = 1 X 2.200 X 2.200	=	4.840	SQ.M
15 = 1 X 30.000 X 4.800	=	144.000	SQ.M
16 = 1 X 27.500 X 19.800	=	544.500	SQ.M
17 = 1 X 19.500 X 2.200	=	42.900	SQ.M
18 = 1 X 7.500 X 2.200	=	16.500	SQ.M
TOTAL	=	2089.871	SQ.M



TYPICAL FLOOR (2nd to 6th, 8th to 10th, 12th to 14th, 16th to 17th)			
GROSS - A			
1 = 0.5 X 24.006 X 10.338	=	123.662	SQ.M
2 = 1 X 24.006 X 41.238	=	990.994	SQ.M
3 = 0.5 X 24.006 X 41.238	=	495.497	SQ.M
4 = 1 X 57.188 X 51.154	=	2927.111	SQ.M
5 = 0.5 X 57.188 X 51.154	=	1463.555	SQ.M
6 = 1 X 28.802 X 32.439	=	934.227	SQ.M
7 = 1 X 12.001 X 4.150	=	49.802	SQ.M
8 = 0.5 X 12.001 X 4.150	=	24.901	SQ.M
9 = 1 X 18.709 X 4.894	=	91.538	SQ.M
TOTAL	=	6172.491	SQ.M
GROSS - B			
a = 1 X 0.5 X 2.200 X 2.200	=	2.420	SQ.M
b = 1 X 0.5 X 2.200 X 2.200	=	2.420	SQ.M
c = 1 X 2.200 X 1.800	=	3.960	SQ.M
d = 1 X 2.200 X 1.800	=	3.960	SQ.M
e = 1 X 10.200 X 5.400	=	55.750	SQ.M
f = 1 X 2.200 X 10.200	=	22.440	SQ.M
g = 1 X 34.000 X 13.800	=	469.560	SQ.M
h = 1 X 2.200 X 2.200	=	4.840	SQ.M
i = 1 X 2.200 X 2.200	=	4.840	SQ.M
j = 1 X 2.200 X 2.200	=	4.840	SQ.M
k = 1 X 2.200 X 2.200	=	4.840	SQ.M
l = 1 X 2.200 X 2.200	=	4.840	SQ.M
m = 1 X 2.200 X 2.200	=	4.840	SQ.M
n = 1 X 2.200 X 2.200	=	4.840	SQ.M
o = 1 X 2.200 X 2.200	=	4.840	SQ.M
p = 1 X 2.200 X 2.200	=	4.840	SQ.M
q = 1 X 2.200 X 2.200	=	4.840	SQ.M
r = 1 X 2.200 X 2.200	=	4.840	SQ.M
s = 1 X 2.200 X 2.200	=	4.840	SQ.M
t = 1 X 2.200 X 2.200	=	4.840	SQ.M
u = 1 X 2.200 X 2.200	=	4.840	SQ.M
v = 1 X 2.200 X 2.200	=	4.840	SQ.M
w = 1 X 2.200 X 2.200	=	4.840	SQ.M
x = 1 X 2.200 X 2.200	=	4.840	SQ.M
y = 1 X 2.200 X 2.200	=	4.840	SQ.M
z = 1 X 2.200 X 2.200	=	4.840	SQ.M
aa = 1 X 2.200 X 2.200	=	4.840	SQ.M
ab = 1 X 2.200 X 2.200	=	4.840	SQ.M
ac = 1 X 2.200 X 2.200	=	4.840	SQ.M
ad = 1 X 2.200 X 2.200	=	4.840	SQ.M
ae = 1 X 2.200 X 2.200	=	4.840	SQ.M
af = 1 X 2.200 X 2.200	=	4.840	SQ.M
ag = 1 X 2.200 X 2.200	=	4.840	SQ.M
ah = 1 X 2.200 X 2.200	=	4.840	SQ.M
ai = 1 X 2.200 X 2.200	=	4.840	SQ.M
aj = 1 X 2.200 X 2.200	=	4.840	SQ.M
ak = 1 X 2.200 X 2.200	=	4.840	SQ.M
al = 1 X 2.200 X 2.200	=	4.840	SQ.M
am = 1 X 2.200 X 2.200	=	4.840	SQ.M
an = 1 X 2.200 X 2.200	=	4.840	SQ.M
ao = 1 X 2.200 X 2.200	=	4.840	SQ.M
ap = 1 X 2.200 X 2.200	=	4.840	SQ.M
aq = 1 X 2.200 X 2.200	=	4.840	SQ.M
ar = 1 X 2.200 X 2.200	=	4.840	SQ.M
as = 1 X 2.200 X 2.200	=	4.840	SQ.M
at = 1 X 2.200 X 2.200	=	4.840	SQ.M
au = 1 X 2.200 X 2.200	=	4.840	SQ.M
av = 1 X 2.200 X 2.200	=	4.840	SQ.M
aw = 1 X 2.200 X 2.200	=	4.840	SQ.M
ax = 1 X 2.200 X 2.200	=	4.840	SQ.M
ay = 1 X 2.200 X 2.200	=	4.840	SQ.M
az = 1 X 2.200 X 2.200	=	4.840	SQ.M
ba = 1 X 2.200 X 2.200	=	4.840	SQ.M
bb = 1 X 2.200 X 2.200	=	4.840	SQ.M
bc = 1 X 2.200 X 2.200	=	4.840	SQ.M
bd = 1 X 2.200 X 2.200	=	4.840	SQ.M
be = 1 X 2.200 X 2.200	=	4.840	SQ.M
bf = 1 X 2.200 X 2.200	=	4.840	SQ.M
bg = 1 X 2.200 X 2.200	=	4.840	SQ.M
bh = 1 X 2.200 X 2.200	=	4.840	SQ.M
bi = 1 X 2.200 X 2.200	=	4.840	SQ.M
bj = 1 X 2.200 X 2.200	=	4.840	SQ.M
bk = 1 X 2.200 X 2.200	=	4.840	SQ.M
bl = 1 X 2.200 X 2.200	=	4.840	SQ.M
bm = 1 X 2.200 X 2.200	=	4.840	SQ.M
bn = 1 X 2.200 X 2.200	=	4.840	SQ.M
bo = 1 X 2.200 X 2.200	=	4.840	SQ.M
bp = 1 X 2.200 X 2.200	=	4.840	SQ.M
bq = 1 X 2.200 X 2.200	=	4.840	SQ.M
br = 1 X 2.200 X 2.200	=	4.840	SQ.M
bs = 1 X 2.200 X 2.200	=	4.840	SQ.M
bt = 1 X 2.200 X 2.200	=	4.840	SQ.M
bu = 1 X 2.200 X 2.200	=	4.840	SQ.M
bv = 1 X 2.200 X 2.200	=	4.840	SQ.M
bw = 1 X 2.200 X 2.200	=	4.840	SQ.M
bx = 1 X 2.200 X 2.200	=	4.840	SQ.M
by = 1 X 2.200 X 2.200	=	4.840	SQ.M
bz = 1 X 2.200 X 2.200	=	4.840	SQ.M
ca = 1 X 2.200 X 2.200	=	4.840	SQ.M
cb = 1 X 2.200 X 2.200	=	4.840	SQ.M
cc = 1 X 2.200 X 2.200	=	4.840	SQ.M
cd = 1 X 2.200 X 2.200	=	4.840	SQ.M
ce = 1 X 2.200 X 2.200	=	4.840	SQ.M
cf = 1 X 2.200 X 2.200	=	4.840	SQ.M
cg = 1 X 2.200 X 2.200	=	4.840	SQ.M
ch = 1 X 2.200 X 2.200	=	4.840	SQ.M
ci = 1 X 2.200 X 2.200	=	4.840	SQ.M
cj = 1 X 2.200 X 2.200	=	4.840	SQ.M
ck = 1 X 2.200 X 2.200	=	4.840	SQ.M
cl = 1 X 2.200 X 2.200	=	4.840	SQ.M
cm = 1 X 2.200 X 2.200	=	4.840	SQ.M
cn = 1 X 2.200 X 2.200	=	4.840	SQ.M
co = 1 X 2.200 X 2.200	=	4.840	SQ.M
cp = 1 X 2.200 X 2.200	=	4.840	SQ.M
cq = 1 X 2.200 X 2.200	=	4.840	SQ.M
cr = 1 X 2.200 X 2.200	=	4.840	SQ.M
cs = 1 X 2.200 X 2.200	=	4.840	SQ.M
ct = 1 X 2.200 X 2.200	=	4.840	SQ.M
cu = 1 X 2.200 X 2.200	=	4.840	SQ.M
cv = 1 X 2.200 X 2.200	=	4.840	SQ.M
cw = 1 X 2.200 X 2.200	=	4.840	SQ.M
cx = 1 X 2.200 X 2.200	=	4.840	SQ.M
cy = 1 X 2.200 X 2.200	=	4.840	SQ.M
cz = 1 X 2.200 X 2.200	=	4.840	SQ.M
da = 1 X 2.200 X 2.200	=	4.840	SQ.M
db = 1 X 2.200 X 2.200	=	4.840	SQ.M
dc = 1 X 2.200 X 2.200	=	4.840	SQ.M
dd = 1 X 2.200 X 2.200	=	4.840	SQ.M
de = 1 X 2.200 X 2.200	=	4.840	SQ.M
df = 1 X 2.200 X 2.200	=	4.840	SQ.M
dg = 1 X 2.200 X 2.200	=		