

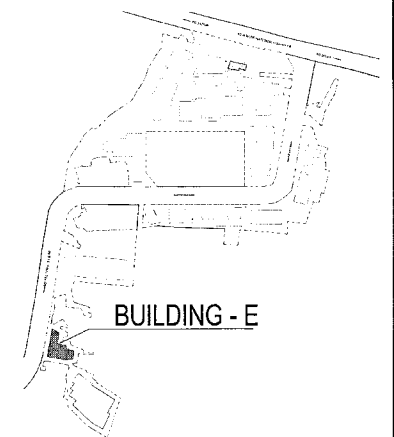
This is a "PROVISIONAL BUILDING PLAN" approved only for the purpose of inviting objections from the general public.

DRG NO. BS-5E

Ushaan
ARCHITECT (P.O.) STP
Member Secretary
BPC
Member
BPAC
Ravi Avtar
AD (H)

3D PA ATIP

KEY PLAN



BUILDING - E

DLF50001

Architect
Hafeez
Contractor

29, Bunk Street, Saket, New Delhi-110017



RISMS ARCHITECTS PVT. LTD.
69, Nara Niwas Bhawanij Kunj
(Behind D2), Vasant Kunj,
New Delhi-110070.
Tel.: 011-26898616, 26898617
www.risms-arch.com

PROPOSED BUILDING PLANS OF
BUILDING - B AND REVISED BUILDING PLANS
OF BUILDING - C, D, E, & F IN CYBER CITY
UNDER TRANSIT ORIENTED DEVELOPMENT
(TOD) POLICY FOR MIX LAND USED
COLONY (70% IT/ITES/+30% COMMERCIAL)
MEASURING 108.55922 ACRES IN SECTOR 24,
25 & 25-A, GURUGRAM MANESAR URBAN
COMPLEX BEING DEVELOPED BY
DLF CYBER CITY DEVELOPERS LIMITED

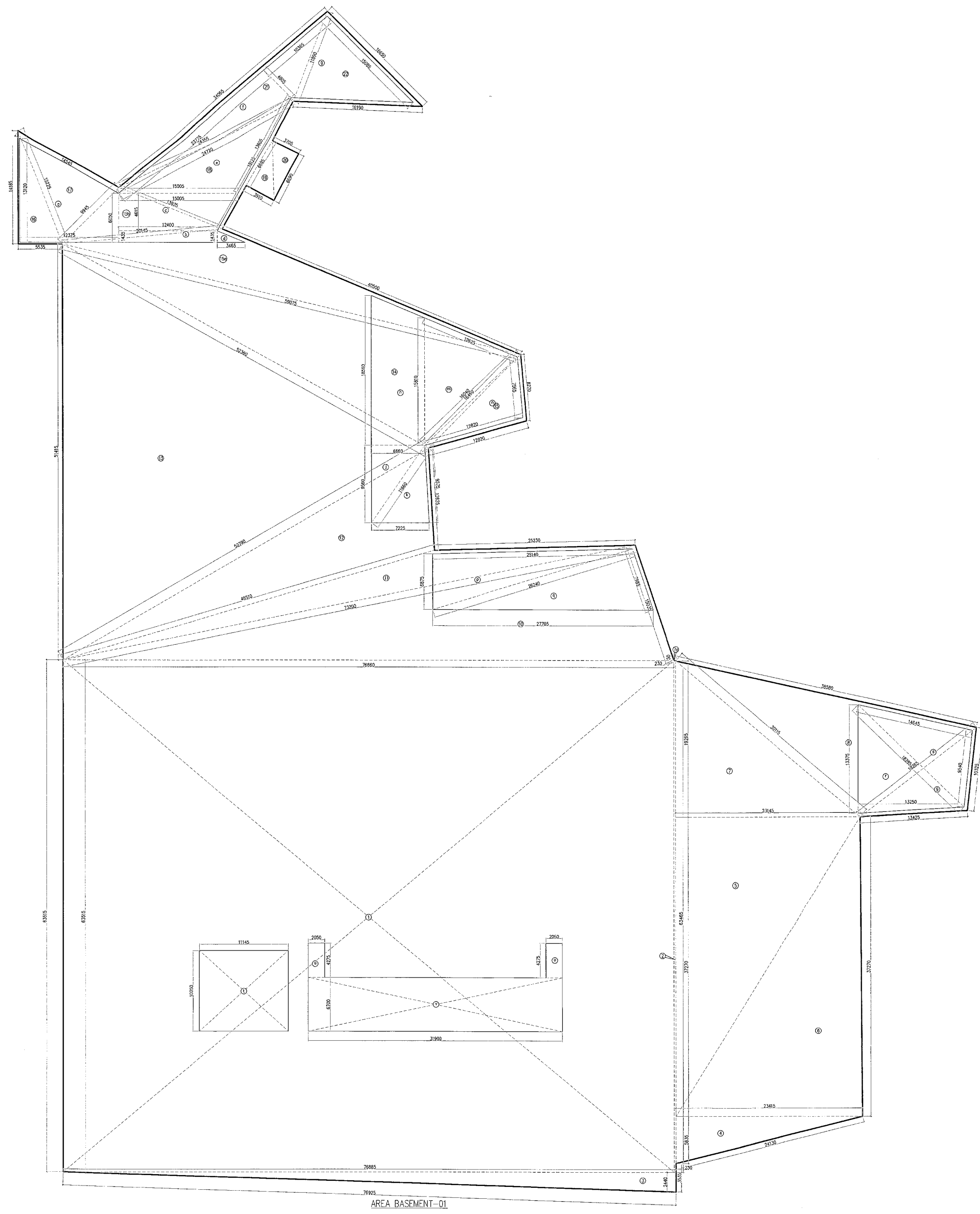
OWNER: DLF Cyber City Developers Ltd.
10th Floor DLF Gateway Tower,
DLF Cyber City, Gurugram, Haryana
Pin: 122002

DRAWING TITLE: -
AREA CALCULATION OF BASEMENT-01
BLOCK-E

REVISION	JOB NO. -	DRG NO. -	NORTH -
	SCALE -	DATE -	
	1:150	07-04-2021	

FILE -	DEALT BY -	CHECKED BY -	APPROVED BY -

ARCHITECT'S SEAL & SIGNATURE	OWNER'S SEAL & SIGNATURE



AREA BASEMENT-01

AREA CALCULATION BASEMENT-01 (BLOCK-E)					
1	=	1	X	70.950	X 80.315 = 4889.000 SQM
2	=	1	X	53.665	X 5.220 = 280.151 SQM
3	=	0.5	X	76.885	X 2.440 = 187.618 SQM
4	=	0.5	X	23.415	X 5.830 = 136.310 SQM
5	=	0.5	X	23.445	X 37.270 = 873.302 SQM
6	=	0.5	X	23.415	X 37.270 = 873.302 SQM
7	=	0.5	X	23.145	X 19.265 = 446.244 SQM
7a	=	0.5	X	2.220	X 0.000 = 0.000 SQM
16	=	0.5	X	5.530	X 14.165 = 78.127 SQM
18	=	0.5	X	2.910	X 6.000 = 17.460 SQM
20	=	0.5	X	3.705	X 6.000 = 22.230 SQM
TOTAL					= 6291.194 SQM

NET AREA OF BASEMENT-01	=	GROSS-A	+ GROSS-B	- GROSS-C	- GROSS-D
	=	6201.194	+ 3516.884	- 451.498	- 511.253
NET SERVICE AREA OF BASEMENT-01	=	GROSS-1	+ GROSS-2	+ GROSS-3	+ GROSS-4
	=	8865.241	+ 343.268	+ 157.850	+ 157.850
NET PARKING AREA OF BASEMENT-01	=	GROSS-1	- GROSS-2	- GROSS-3	- GROSS-4
	=	8865.241	- 343.268	- 157.850	- 157.850
NO OF CAR ACHEIVABLE OF BASEMENT-01	=	8364.026	/	32	
OR SAY	=	261.692		CARS	
	=	391		CARS	

NO.	A	B	C	s	AREA OF (S-S-A) (S-S-B-C)	Area
8	38.580	18.285	30.115	/ 2	43.480	7178.159
9	18.285	13.425	10.325	/ 2	21.058	4868.652
10	76.990	73.200	16.855	/ 2	62.448	20140.216
11	48.510	73.200	25.220	/ 2	74.470	23885.024
12	48.510	52.730	12.525	/ 2	55.983	63072.118
13	52.730	81.415	52.360	/ 2	78.283	139880.641
14	52.360	59.075	16.460	/ 2	63.968	171452.757
15	18.460	12.820	9.270	/ 2	18.775	2718.997
15a	59.075	20.145	40.500	/ 2	59.850	29128.861
15b	6.945	13.830	20.145	/ 2	22.013	4207.795
17	14.545	13.225	9.945	/ 2	19.858	4844.201
18	13.015	18.125	24.355	/ 2	28.258	19037.795
21	24.355	14.660	11.860	/ 2	35.165	8901.996
22	11.860	16.650	16.150	/ 2	22.385	6261.537
TOTAL					=	3416.884 SQM

DOUBLE HEIGHT AREA BASEMENT-01 (BLOCK-E)					
a	=	0.5	X	(13.120x0.000)	X 12.375 = 159.614 SQM
b	=	1	X	12.400	X 1.435 = 17.784 SQM
c	=	0.5	X	(15.000x12.400)	X 4.615 = 63.227 SQM
d	=	0.5	X	3.405	X 1.435 = 2.465 SQM
e	=	0.5	X	(4.800x15.080)	X 10.365 = 100.050 SQM
h	=	0.5	X	(18.560x15.610)	X 6.960 = 114.452 SQM
i	=	0.5	X	6.960	X 9.960 = 31.839 SQM
TOTAL					= 451.498 SQM

DOUBLE HEIGHT AREA BASEMENT-01 (BLOCK-E)								
e	=	15.820	+ 24.720	+ 13.625	/ 2 = 26.685	7817.742	88.896	SQM
f	=	23.775	+ 24.720	+ 4.825	/ 2 = 28.650	3220.512	56.836	SQM
k	=	11.960	+ 9.975	+ 7.225	/ 2 = 14.200	1192.820	34.633	SQM
m	=	13.625	+ 16.040	+ 55.910	/ 2 = 22.238	874.927	62.278	SQM
n	=	16.040	+ 12.820	+ 7.560	/ 2 = 18.213	2271.785	47.660	SQM
o	=	23.140	+ 6.875	+ 28.240	/ 2 = 29.128	7462.895	80.388	SQM
q	=	27.765	+ 26.240	+ 7.665	/ 2 = 30.985	10860.785	104.694	SQM
TOTAL					=	811.289	SQM	

SERVICE AREA BASEMENT-01 (BLOCK-E)					
t	=	1	X	11.145	X 10.080 = 112.037 SQM
u	=	2	X	2.050	X 4.275 = 17.528 SQM
v	=	1	X	31.900	X 6.700 = 213.730 SQM
TOTAL					= 343.295 SQM

SERVICE AREA BASEMENT-01 (BLOCK-E)								
r	=	13.220	+ 13.375	+ 18.285	/ 2 = 22.455	725.341	86.487	SQM
s	=	14.645	+ 9.240	+ 18.285	/ 2 = 21.215	4837.918	69.483	SQM
TOTAL					=	187.970	SQM	