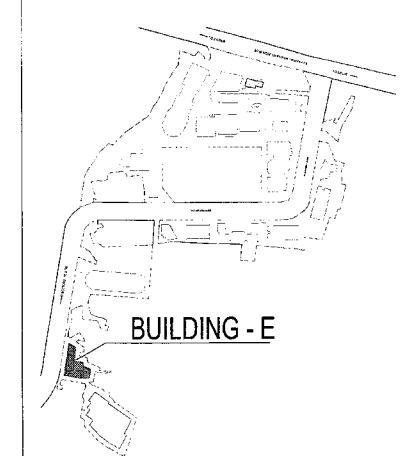


This is a "PROVISIONAL BUILDING PLAN" approved only for the purpose of inviting objections on the general public.

DRG NO. BS-6E

APPROVED BY: *[Signature]*
 MEMBER SECRETARY
 BPC
 DLF (P) LTD
 MEMBER
 ADHIC
[Signature]
 P. D.
 J. P.

KEY PLAN



DLF50002

Architect
 Hafeez
 Contractor

RISIMS
 ARCHITECTS

RSMS ARCHITECTS PVT. LTD.
 69, Nora Niwas, Bhawani Kunj
 (Behind D2), Vasant Kunj,
 New Delhi-110070.
 Tel.: 011-26898616, 26898617
 www.rsms-arch.com

Project:
 PROPOSED BUILDING PLANS OF
 BUILDING - B AND REVISED BUILDING PLANS
 OF BUILDING - C, D, E, & F IN CYBER CITY
 UNDER TRANSIT ORIENTED DEVELOPMENT
 (TOD) POLICY FOR MIX LAND USED
 COLONY (70% IT/ITES / +30% COMMERCIAL)
 MEASURING 108.55922 ACRES IN SECTOR 24,
 25 & 25-A, GURUGRAM MANESAR URBAN
 COMPLEX BEING DEVELOPED BY
 DLF CYBER CITY DEVELOPERS LIMITED

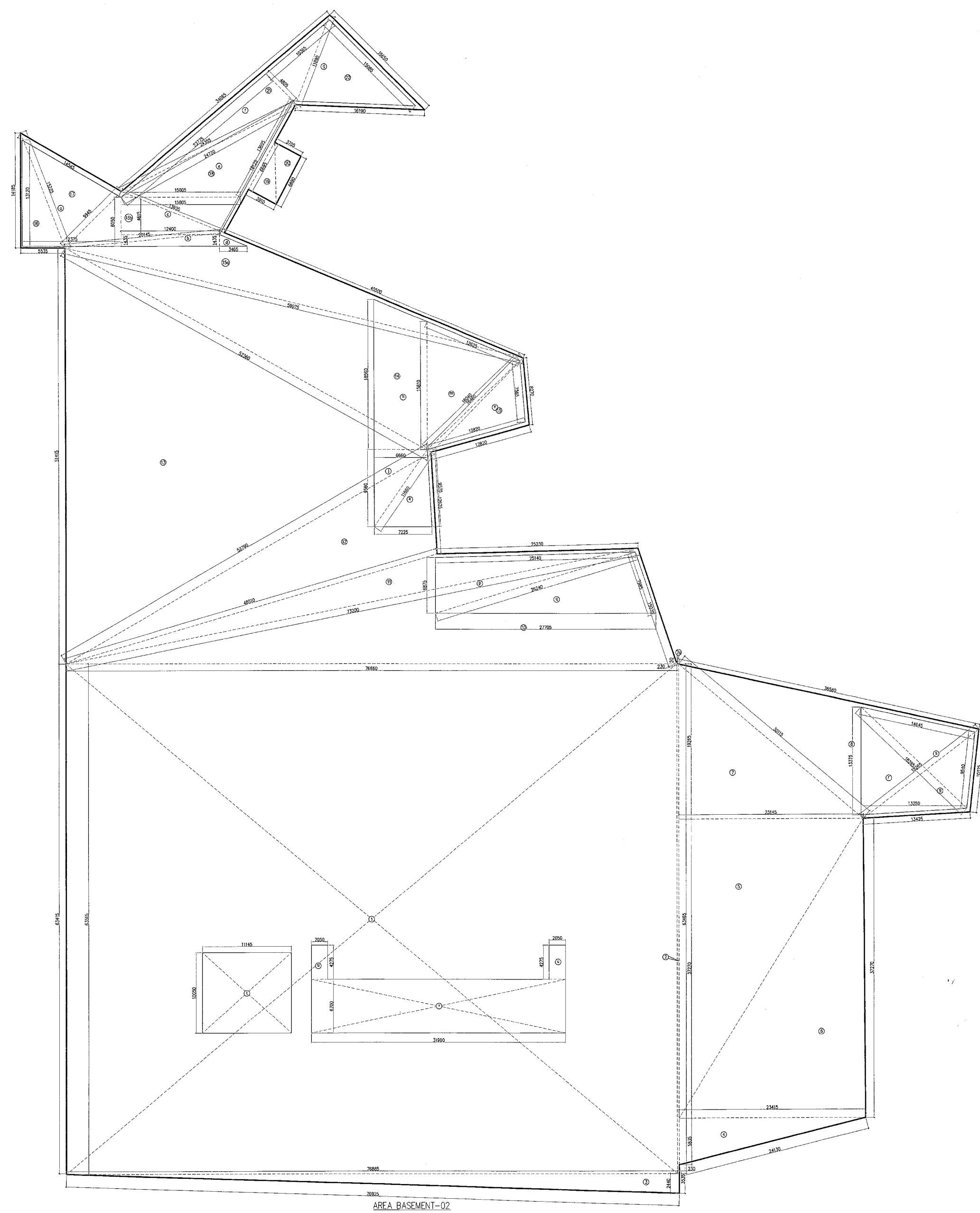
OWNER: DLF Cyber City Developers Ltd.
 10th Floor DLF Gateway Tower,
 DLF Cyber City, Gurugram, Haryana
 Pin: 122002

DRAWING TITLE: AREA CALCULATION OF BASEMENT-02 BLOCK-E

REVISION	JOB NO. -	DRG NO. -	NORTH -
		BS-6E	
	SCALE: 1:150	DATE: 01-04-2021	

FILE: - DEALT BY: - CHECKED BY: - APPROVED BY: -

ARCHITECT'S SEAL & SIGNATURE: *[Signature]*
 OWNER'S SEAL & SIGNATURE:



GROSS - A						
AREA CALCULATION BASEMENT-02(BLOCK-E)						
1	=	1	X	76.660	X	63.515 = 4869.200 SQM
2	=	1	X	83.465	X	5.230 = 435.997 SQM
3	=	0.8	X	76.885	X	9.440 = 726.080 SQM
4	=	0.5	X	23.415	X	8.895 = 207.315 SQM
5	=	0.5	X	23.445	X	37.270 = 874.307 SQM
6	=	0.5	X	22.410	X	37.270 = 835.339 SQM
7	=	0.5	X	23.145	X	19.265 = 446.944 SQM
18	=	0.5	X	6.200	X	0.000 = 0.000 SQM
19	=	0.5	X	5.635	X	14.165 = 79.927 SQM
19	=	0.5	X	3.915	X	8.895 = 34.809 SQM
20	=	0.5	X	3.705	X	6.690 = 24.693 SQM
TOTAL						= 6201.104 SQM

NET AREA OF BASEMENT-02		= GROSS-A	=	GROSS-B	=	3816.894
NET SERVICE AREA OF BASEMENT-02		= GROSS-4	=	GROSS-5	=	669.309
NET PARKING AREA OF BASEMENT-02		= GROSS-1	=	GROSS-2	=	1463.972
NO OF CAR ADHREABLE OF BASEMENT-02		=	8564.005	/	25	342.560
OR SAY		=	261			261

NO.	A	B	C	s	AREA OF (S-S-A) (S-B)(S-C)	Area
8	38.590	+ 18.285	+ 30.115	/ 2	= 43.480	7178.180
9	19.285	+ 13.425	+ 10.325	/ 2	= 21.008	4656.862
10	73.660	+ 73.200	+ 15.030	/ 2	= 62.448	37463.718
11	48.510	+ 73.200	+ 25.230	/ 2	= 73.470	29895.024
12	48.510	+ 52.700	+ 12.425	/ 2	= 36.863	80072.116
13	52.700	+ 11.445	+ 52.380	/ 2	= 78.280	338992.641
14	52.350	+ 59.075	+ 16.400	/ 2	= 43.548	171453.757
15	16.460	+ 12.820	+ 8.270	/ 2	= 18.775	2718.997
15b	59.075	+ 23.145	+ 40.020	/ 2	= 56.880	24123.851
16b	9.945	+ 13.935	+ 20.145	/ 2	= 22.013	4007.045
17	14.545	+ 15.225	+ 9.945	/ 2	= 19.858	4844.201
18	13.895	+ 18.105	+ 24.195	/ 2	= 36.288	15837.769
21	24.325	+ 34.365	+ 11.830	/ 2	= 35.165	9658.096
22	11.890	+ 18.090	+ 16.190	/ 2	= 22.385	8287.637
TOTAL						= 3816.894 SQM

GROSS - C						
SERVICE AREA BASEMENT-02(BLOCK-E)						
b	=	0.8	X	(13.120+6.050)	X	12.375 = 118.614 SQM
b	=	1	X	12.400	X	1.435 = 17.794 SQM
c	=	0.5	X	(15.000+15.400)	X	4.815 = 63.297 SQM
d	=	0.5	X	3.405	X	1.435 = 2.488 SQM
g	=	0.5	X	(4.900+11.085)	X	19.365 = 103.080 SQM
h	=	0.5	X	(18.900+18.910)	X	6.960 = 114.452 SQM
j	=	0.8	X	8.660	X	9.560 = 31.835 SQM
l	=	1	X	11.145	X	10.900 = 112.057 SQM
u	=	2	X	2.290	X	4.275 = 17.568 SQM
v	=	1	X	31.900	X	6.700 = 213.730 SQM
TOTAL						= 794.763 SQM

GROSS - D						
SERVICE AREA BASEMENT-02(BLOCK-E)						
e	15.005	+ 24.720	+ 13.605	/ 2	= 29.565	7697.742
f	23.775	+ 24.720	+ 4.895	/ 2	= 36.560	3292.312
k	11.860	+ 9.875	+ 7.225	/ 2	= 14.230	1182.520
m	12.825	+ 15.040	+ 15.810	/ 2	= 22.238	8914.897
n	15.940	+ 12.820	+ 7.880	/ 2	= 18.713	2271.795
p	25.140	+ 6.875	+ 26.240	/ 2	= 28.128	7462.890
q	27.705	+ 28.240	+ 7.885	/ 2	= 35.265	10800.798
r	13.220	+ 13.375	+ 18.295	/ 2	= 24.455	7929.341
s	14.645	+ 9.540	+ 18.285	/ 2	= 21.235	4827.516
TOTAL						= 689.209 SQM

AREA BASEMENT-02