

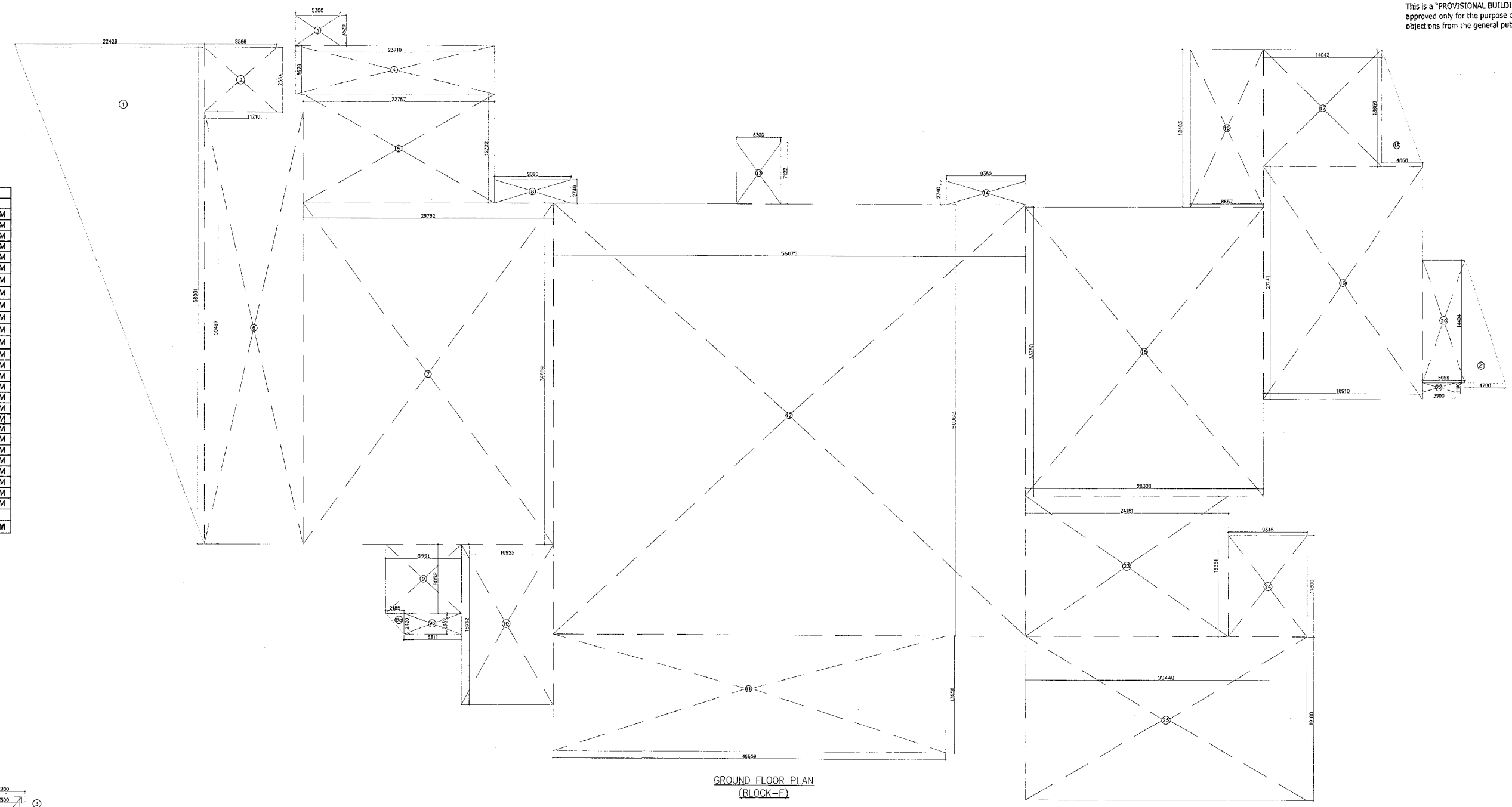
This is a "PROVISIONAL BUILDING PLAN" approved only for the purpose of inviting objections from the general public.

DRG NO. BF-09

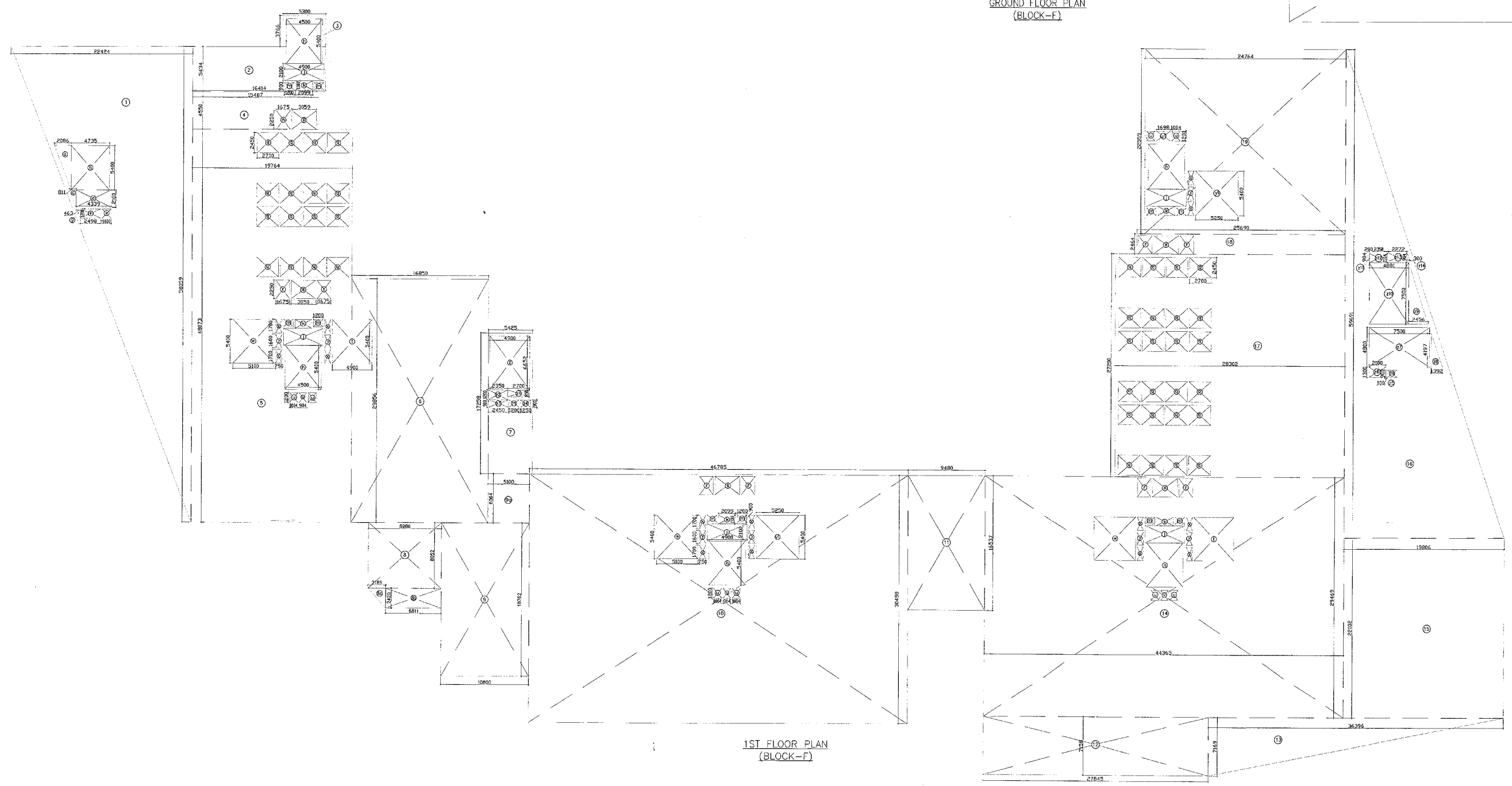
ARCHITECT (P&I) S.P. Member Secretary BPC
 MEMBER SECRETARY BPC
 MEMBER SECRETARY BPC

JP FA ATP

GROUND AREA (BLOCK-F)									
1	=	0.5	X	22.428	X	58.031	=	650.760	SQM
2	=	1	X	8.666	X	7.534	=	64.536	SQM
3	=	1	X	5.300	X	3.520	=	18.656	SQM
4	=	1	X	23.710	X	5.679	=	134.649	SQM
5	=	1	X	22.767	X	12.722	=	289.642	SQM
6	=	1	X	11.710	X	53.467	=	591.320	SQM
7	=	1	X	26.762	X	39.888	=	1167.974	SQM
8	=	1	X	9.090	X	2.740	=	24.907	SQM
9	=	1	X	8.991	X	8.052	=	72.396	SQM
9a	=	0.5	X	2.185	X	2.420	=	2.644	SQM
9b	=	1	X	6.811	X	2.452	=	16.701	SQM
10	=	1	X	10.825	X	18.762	=	204.975	SQM
11	=	1	X	48.659	X	13.658	=	637.269	SQM
12	=	1	X	58.075	X	50.362	=	2824.049	SQM
13	=	1	X	5.300	X	7.122	=	37.747	SQM
14	=	1	X	9.350	X	2.740	=	25.619	SQM
15	=	1	X	28.308	X	33.750	=	955.395	SQM
16	=	1	X	8.657	X	18.403	=	159.315	SQM
17	=	1	X	14.042	X	13.659	=	191.600	SQM
18	=	0.5	X	4.868	X	13.659	=	33.248	SQM
19	=	1	X	18.910	X	27.141	=	513.236	SQM
20	=	1	X	5.066	X	14.404	=	72.971	SQM
21	=	0.5	X	4.780	X	14.404	=	34.428	SQM
22	=	1	X	3.900	X	1.100	=	4.290	SQM
23	=	1	X	24.181	X	16.351	=	395.384	SQM
24	=	1	X	9.345	X	11.800	=	110.271	SQM
25	=	1	X	33.448	X	19.100	=	638.857	SQM
TOTAL FAR AREA OF GROUND FLOOR = 9893.031 SQM									



GROUND FLOOR PLAN (BLOCK-F)



1ST FLOOR PLAN (BLOCK-F)

1 ST FLOOR AREA CALCULATION (BLOCK-F)									
1	=	10.5	X	22.214	X	58.085	=	600.954	SQM
2	=	1	X	14.116	X	13.152	=	185.796	SQM
3	=	1	X	3.300	X	3.186	=	10.520	SQM
4	=	1	X	17.562	X	24.973	=	438.155	SQM
5	=	1	X	18.562	X	24.973	=	464.115	SQM
6	=	1	X	14.420	X	19.297	=	278.824	SQM
7	=	1	X	1.196	X	1.200	=	1.435	SQM
8	=	1	X	1.196	X	1.200	=	1.435	SQM
9	=	1	X	10.840	X	13.362	=	144.822	SQM
10	=	1	X	10.840	X	13.362	=	144.822	SQM
11	=	1	X	8.360	X	5.450	=	45.571	SQM
12	=	1	X	8.360	X	5.450	=	45.571	SQM
13	=	0.5	X	2.780	X	2.780	=	7.721	SQM
14	=	1	X	18.562	X	24.973	=	464.115	SQM
15	=	1	X	18.562	X	24.973	=	464.115	SQM
16	=	1	X	18.562	X	24.973	=	464.115	SQM
17	=	1	X	18.562	X	24.973	=	464.115	SQM
18	=	1	X	18.562	X	24.973	=	464.115	SQM
19	=	1	X	24.300	X	22.550	=	548.811	SQM
TOTAL = 6342.991 SQM									

DLF 50017

Architect Hafeez Contractor
 29 Jawahar Street, Sonaply, 110 023, India

RISIMIS ARCHITECTS

RSMS ARCHITECTS PVT. LTD.
 69, Nora Niwas, Bhawani Kunj (Behind D2), Vasant Kunj, New Delhi-110070.
 Tel.: 011-26898616, 26898617
 www.rsms-arch.com

Project: PROPOSED BUILDING PLANS OF BUILDING - B AND REVISED BUILDING PLANS OF BUILDING - C, D, E, & F IN CYBER CITY UNDER TRANSIT ORIENTED DEVELOPMENT (TOD) POLICY FOR MIX LAND USED COLONY/70% IT/TES/+30% COMMERCIAL MEASURING 108.55922 ACRES IN SECTOR 24, 25 & 25-A, GURUGRAM MANESAR URBAN COMPLEX BEING DEVELOPED BY DLF CYBER CITY DEVELOPERS LIMITED

OWNER: DLF Cyber City Developers
 10th Floor DLF Gateway Tower, DLF Cyber City, Gurugram, Haryana Pin: 122002

DRAWING TITLE: AREA CALCULATION OF GROUND FLOOR & 1ST FLOOR BLOCK-F

REVISION: JOB NO. - DRG NO. BF-09
 SCALE: 1:200 DATE: 01-04-2021

FILE: DEALT BY: CHECKED BY: APPROVED BY:
 ARCHITECT'S SEAL & SIGNATURE OWNER'S SEAL & SIGNATURE

Handwritten signatures and stamps.