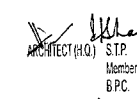
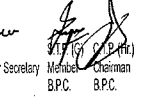
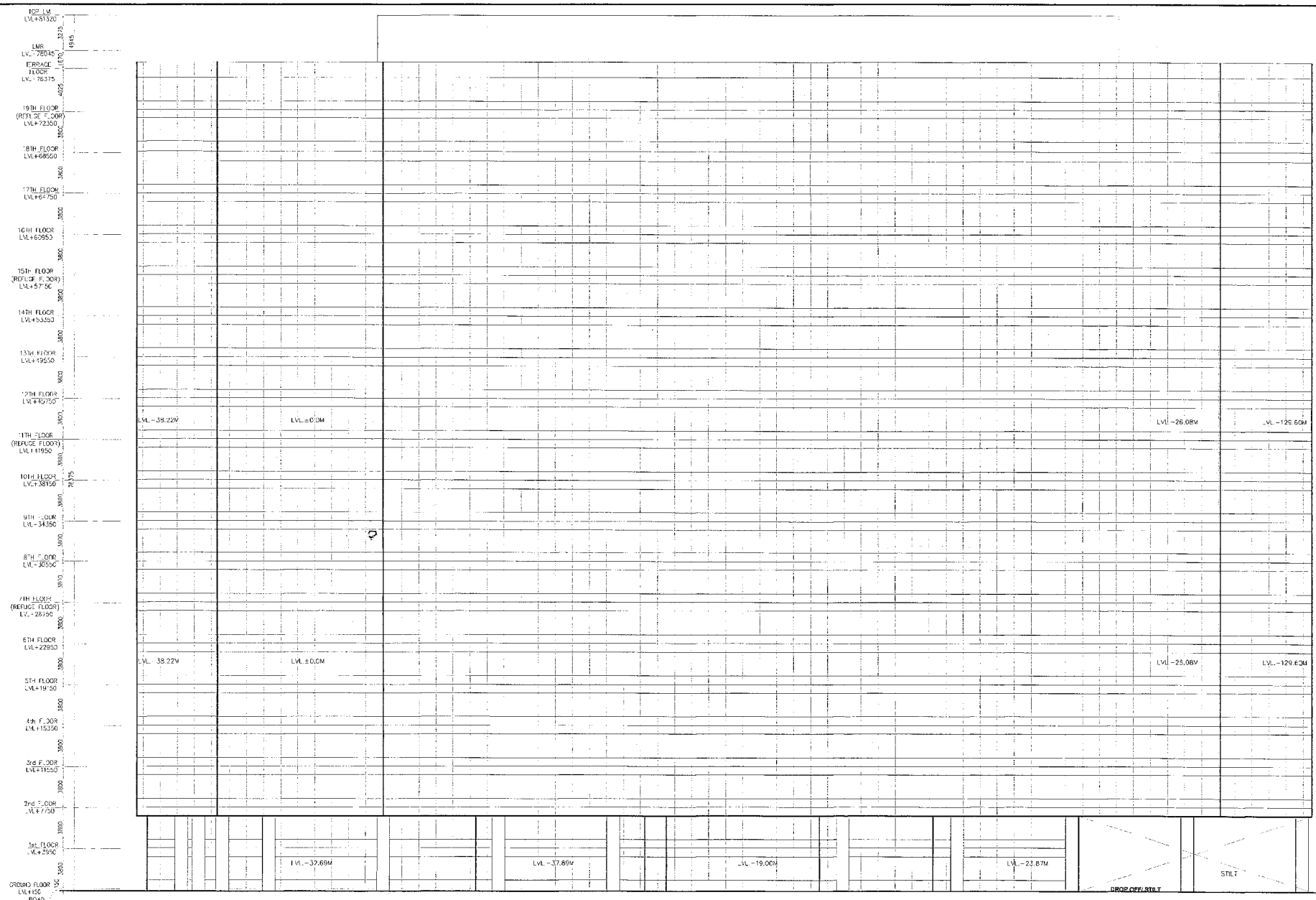


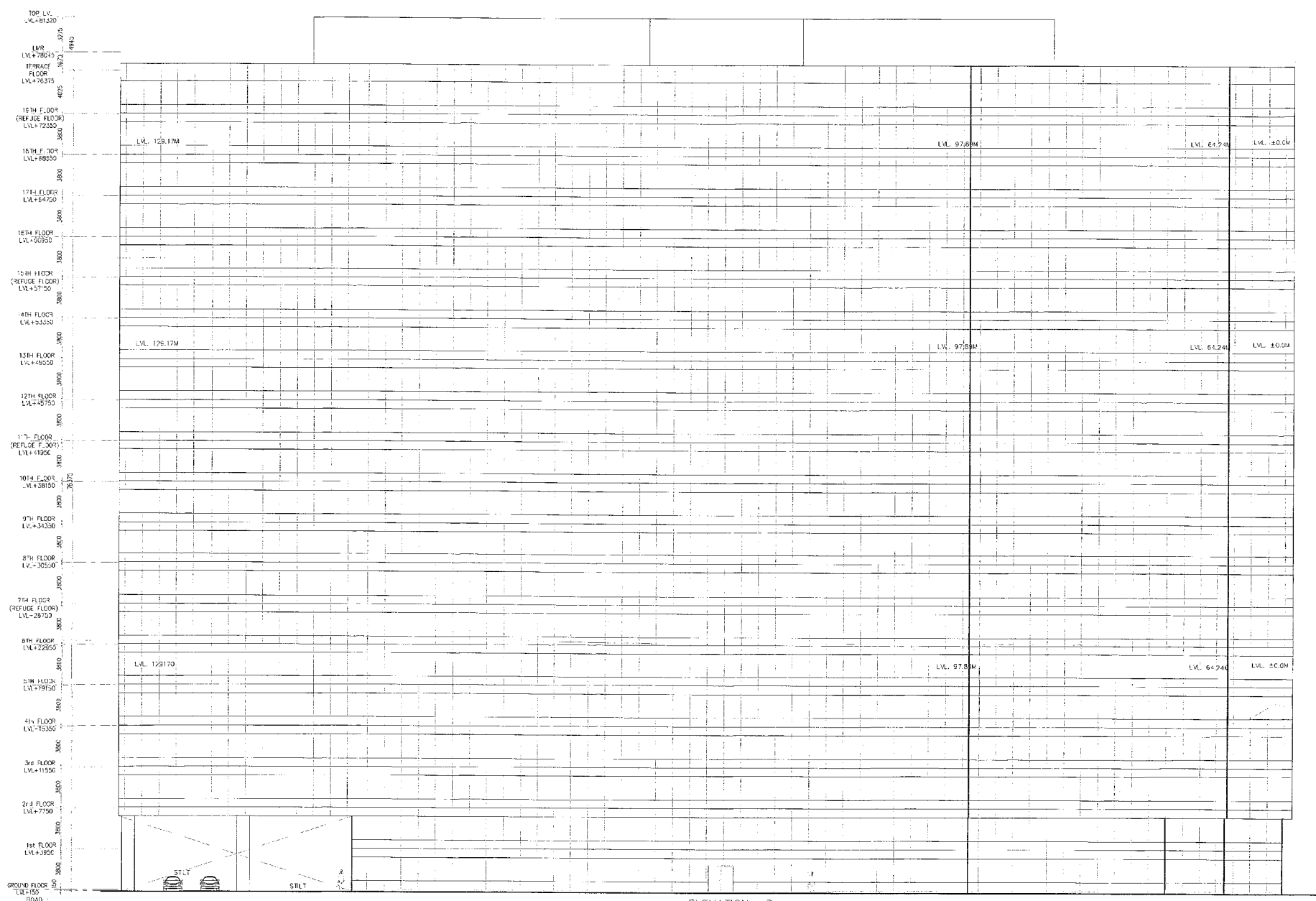
This is a "PROVISIONAL BUILDING PLAN" approved only for the purpose of inviting objections from the general public.

DRG NO. BF-12


  
 ARCHITECT (A.O.) STP  
 Member Secretary BPC Chairman BPC  
 AEG (A.O.)  
 BPC  
 SD PA A-TP



ELEVATION - B  
(BLOCK-F)



ELEVATION - D  
(BLOCK-F)

**DLF 50020**

Architect  
Hafeez  
Contractor

**RISIMIS**  
ARCHITECTS

RSMS ARCHITECTS PVT. LTD.  
69, Arora Niwas - Phowal Kunj  
(Behind J2), Vasant Kunj  
New Delhi-110075  
Tel: 011-26582616, 26899617  
www.rsms-arch.com

PROPOSED BUILDING PLANS OF BUILDING - B AND REVISED BUILDING PLANS OF BUILDING - C, D, E, & F IN CYBER CITY UNDER TRANSIT ORIENTED DEVELOPMENT (TOD) POLICY FOR MIX AND USED GOLF COURSE (RESIDENTIAL/COMMERCIAL) WEASLING 106.55922 ACRES IN SECTION 24, 25 & 25-A, CURUGRAM VANESAT URBAN COMPLEX BEING DEVELOPED BY DLF CYBER CITY DEVELOPERS LIMITED

OWNER: DLF Cyber City Developers Ltd  
10th Floor DLF Gateway Tower,  
DLF Cyber City, Gurugram, Haryana  
Pin: 122002

DRAWING FILE: ELEVATION-B&D BLOCK-F

DESIGN	JOB NO.:	DRG NO.:	SCALE:
		BF-12	1:200
FILE:	DEALT BY:	CHECKED BY:	APPROVED BY:
ARCHITECT'S SEAL & SIGNATURE		OWNER'S SEAL & SIGNATURE	