

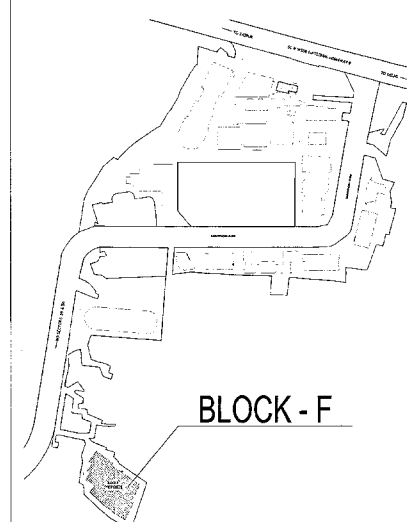
This is a PROVISIONAL BUILDING PLAN approved only for the purpose of inviting objections from the general public.

DDA (IND) Member Secretary BPC

DDA (IND) Member BPC

DDA (IND) Member BPC

KEY PLAN



DLF 50034

Architect Hafeez Contractor

29 Bank Street, Bombay 400 032, Tel: 0666190

RISIMIS ARCHITECTS

RSMS ARCHITECTS PVT. LTD. 69, Nara Niwas, Bhawani Kunj (Behind D2), Vasanti Kunj, New Delhi-110070. Tel.: 011-26898616, 26898617 www.rsms-arch.com

PROPOSED BUILDING PLANS OF BUILDING - B AND REVISED BUILDING PLANS OF BUILDING - C, D, E, & F IN CYBER CITY UNDER TRANSIT ORIENTED DEVELOPMENT (TOD) POLICY FOR MIX LAND USED COLONY (70% IT/ITES / 4.30% COMMERCIAL) MEASURING 108.55922 ACRES IN SECTOR 24, 25 & 25-A, GURUGRAM MANVASAR URBAN COMPLEX BEING DEVELOPED BY DLF CYBER CITY DEVELOPERS LIMITED

OWNER: DLF Cyber City Developers Ltd. 10th Floor DLF Gateway Tower, DLF Cyber City, Gurugram, Haryana Pin: 122002

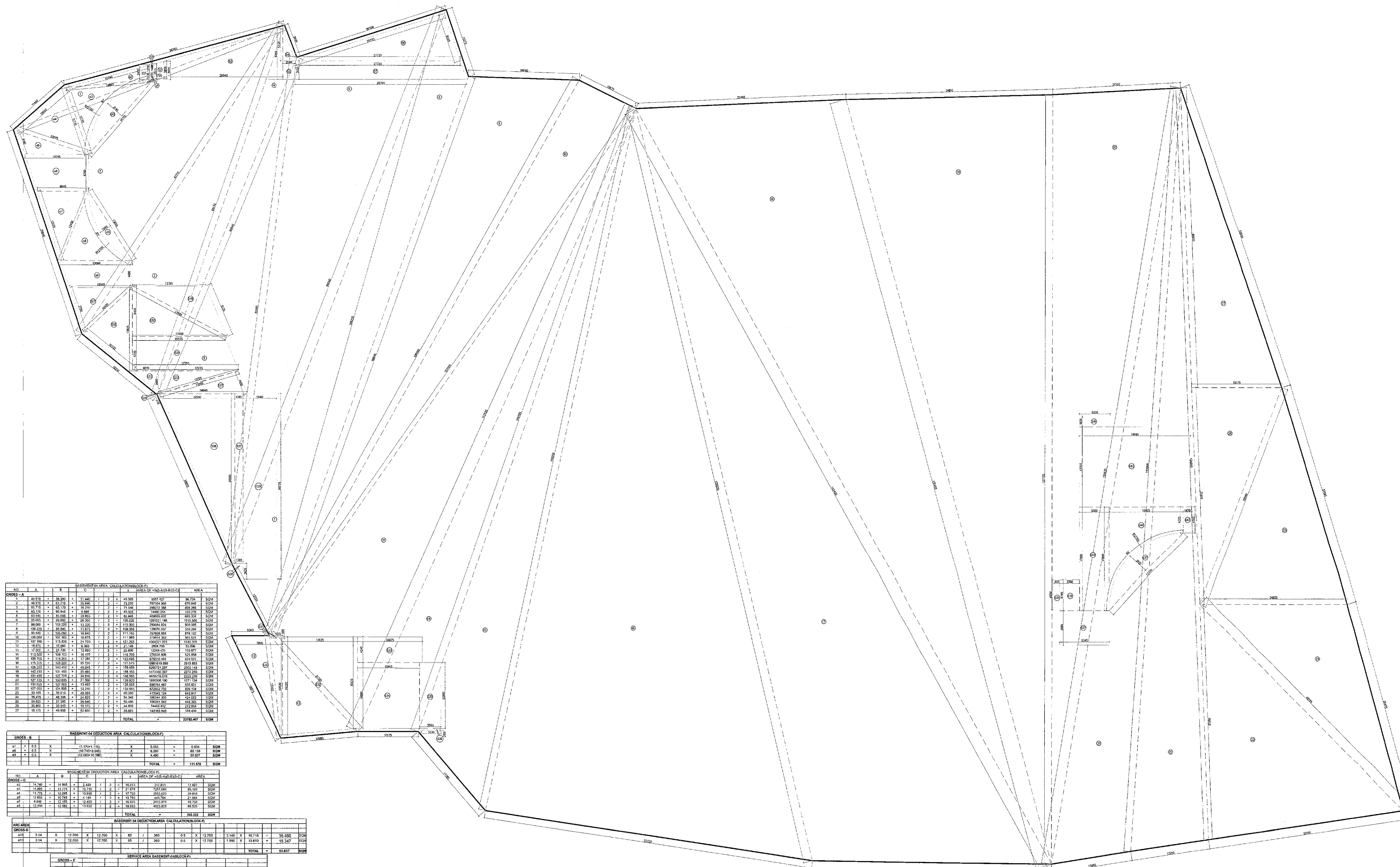
DRAWING TITLE: AREA CALCULATION OF BASEMENT-04 BLOCK-F

Table with columns: REVISION, JOB NO., DRG NO., NORTH, SCALE, DATE. Includes revision 1:200 and date 01-04-2021.

FILE: DEALT BY: CHECKED BY: APPROVED BY:

ARCHITECT'S SEAL & SIGNATURE OWNER'S SEAL & SIGNATURE

Handwritten signatures and official seals of the architect and owner.



BASEMENT-4

Table titled 'BASEMENT-01 AREA CALCULATION (SQ.M)' with columns for NO, A, B, C, AREA OF SUB-DIVISION, AREA. Lists 27 sub-divisions.

Table titled 'BASEMENT-02 AREA CALCULATION (SQ.M)' with columns for NO, A, B, C, AREA OF SUB-DIVISION, AREA. Lists 2 sub-divisions.

Table titled 'BASEMENT-03 AREA CALCULATION (SQ.M)' with columns for NO, A, B, C, AREA OF SUB-DIVISION, AREA. Lists 5 sub-divisions.

Table titled 'BASEMENT-04 AREA CALCULATION (SQ.M)' with columns for NO, A, B, C, AREA OF SUB-DIVISION, AREA. Lists 2 sub-divisions.

Table titled 'BASEMENT-05 AREA CALCULATION (SQ.M)' with columns for NO, A, B, C, AREA OF SUB-DIVISION, AREA. Lists 5 sub-divisions.

Table titled 'BASEMENT-06 AREA CALCULATION (SQ.M)' with columns for NO, A, B, C, AREA OF SUB-DIVISION, AREA. Lists 5 sub-divisions.

Table titled 'BASEMENT-07 AREA CALCULATION (SQ.M)' with columns for NO, A, B, C, AREA OF SUB-DIVISION, AREA. Lists 5 sub-divisions.

Table titled 'BASEMENT-08 AREA CALCULATION (SQ.M)' with columns for NO, A, B, C, AREA OF SUB-DIVISION, AREA. Lists 5 sub-divisions.

Table titled 'BASEMENT-09 AREA CALCULATION (SQ.M)' with columns for NO, A, B, C, AREA OF SUB-DIVISION, AREA. Lists 5 sub-divisions.

Table titled 'BASEMENT-10 AREA CALCULATION (SQ.M)' with columns for NO, A, B, C, AREA OF SUB-DIVISION, AREA. Lists 5 sub-divisions.

Table titled 'BASEMENT-11 AREA CALCULATION (SQ.M)' with columns for NO, A, B, C, AREA OF SUB-DIVISION, AREA. Lists 5 sub-divisions.

Table titled 'BASEMENT-12 AREA CALCULATION (SQ.M)' with columns for NO, A, B, C, AREA OF SUB-DIVISION, AREA. Lists 5 sub-divisions.

Table titled 'BASEMENT-13 AREA CALCULATION (SQ.M)' with columns for NO, A, B, C, AREA OF SUB-DIVISION, AREA. Lists 5 sub-divisions.

Table titled 'BASEMENT-14 AREA CALCULATION (SQ.M)' with columns for NO, A, B, C, AREA OF SUB-DIVISION, AREA. Lists 5 sub-divisions.

Table titled 'BASEMENT-15 AREA CALCULATION (SQ.M)' with columns for NO, A, B, C, AREA OF SUB-DIVISION, AREA. Lists 5 sub-divisions.

Table titled 'BASEMENT-16 AREA CALCULATION (SQ.M)' with columns for NO, A, B, C, AREA OF SUB-DIVISION, AREA. Lists 5 sub-divisions.

Table titled 'BASEMENT-17 AREA CALCULATION (SQ.M)' with columns for NO, A, B, C, AREA OF SUB-DIVISION, AREA. Lists 5 sub-divisions.

Table titled 'BASEMENT-18 AREA CALCULATION (SQ.M)' with columns for NO, A, B, C, AREA OF SUB-DIVISION, AREA. Lists 5 sub-divisions.

Summary table for Basement-04 area calculations, including columns for Gross Area, Net Area, and other metrics.