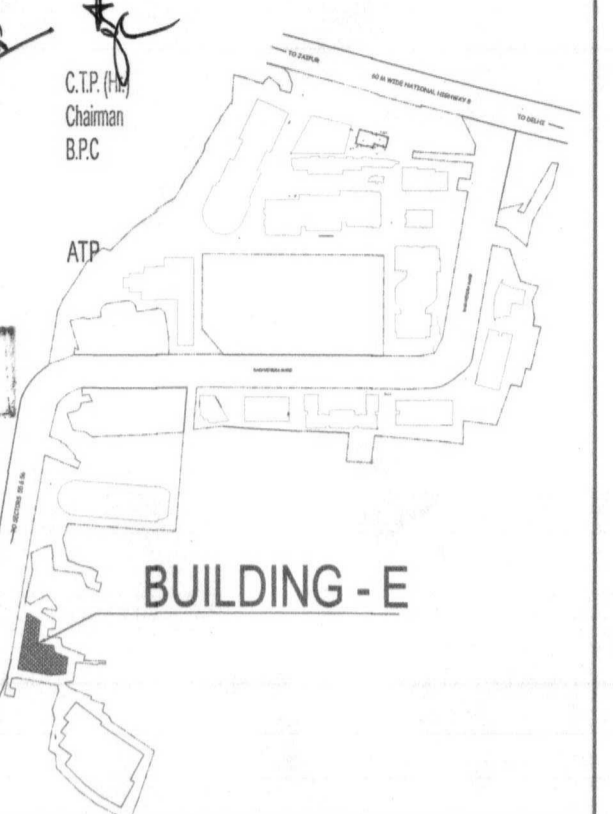


KEY PLAN



(RAM AVTAR BASSI) A.D.

BUILDING - E

DLF45438

Architect
Hafeez
Contractor

RISMS
ARCHITECTS

RSMS ARCHITECTS PVT. LTD.
69, Nora Niwas, Bhawani Kunj
(Behind D2), Vasant Kunj,
New Delhi-110070.
Tel.: 011-26898616, 26898617
www.rsms-arch.com

Project:
PROPOSED BUILDING PLAN OF BUILDING - C, BUILDING - D, BUILDING - E AND BUILDING - F IN 94.57485 ACRES DLF CYBER CITY, SECTOR 24, 25 & 25A, GURGAON, HARYANA.

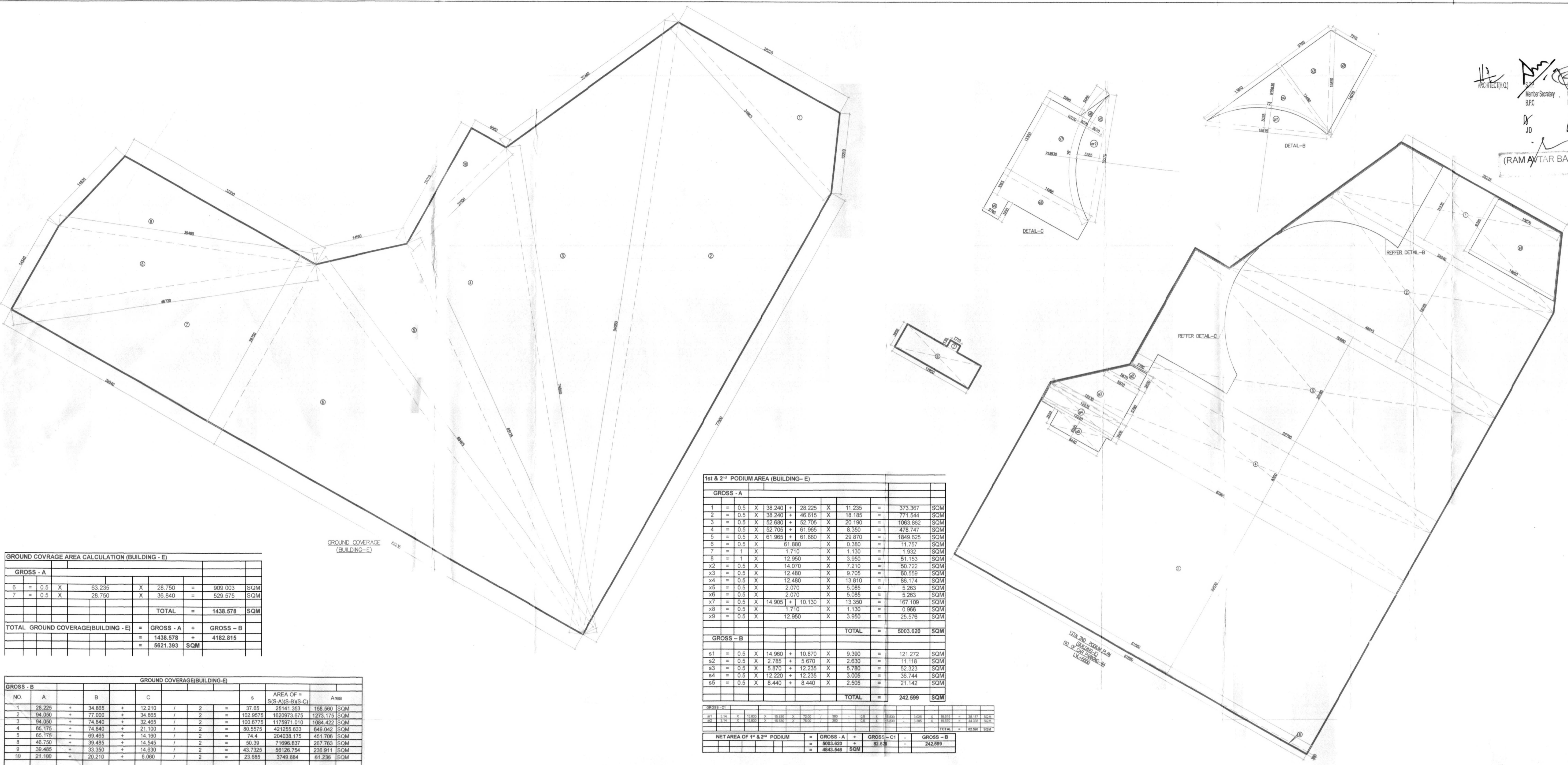
OWNER: DLF Cyber City Developers Ltd.
10th Floor DLF Gateway Tower,
DLF Cyber City, Gurugram, Haryana
Pin: 122002

DRAWING TITLE: -
BUILDING - E
AREA CALCULATION OF GROUND FLOOR & PODIUM - 01.02 & GROUND COVERAGE

REVISION	JOB NO. -	DRG NO. -	NORTH -
		BE-04	N
SCALE: -	DATE: -		
1:200	16-05-2018		
FILE: -	DEALT BY: -	CHECKED BY: -	APPROVED BY: -

ARCHITECT'S SEAL & SIGNATURE

OWNER'S SEAL & SIGNATURE



GROUND COVERAGE AREA CALCULATION (BUILDING - E)

GROSS - A				
6	=	0.5 X	63.235	X 28.750 = 909.003 SQM
7	=	0.5 X	28.750	X 36.840 = 529.575 SQM
				TOTAL = 1438.578 SQM
TOTAL GROUND COVERAGE (BUILDING - E) = GROSS - A + GROSS - B				
				= 1438.578 + 4182.815
				= 5621.393 SQM

GROUND COVERAGE (BUILDING - E)

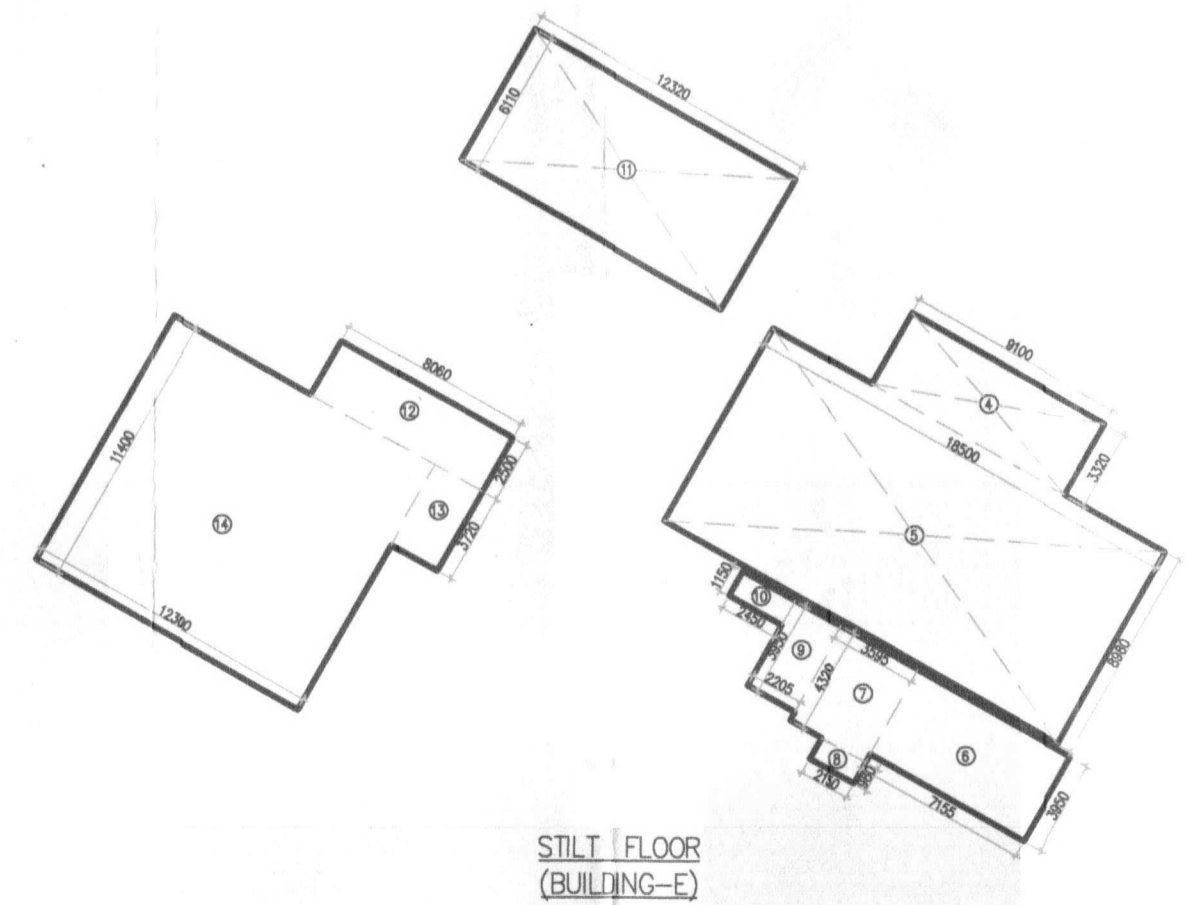
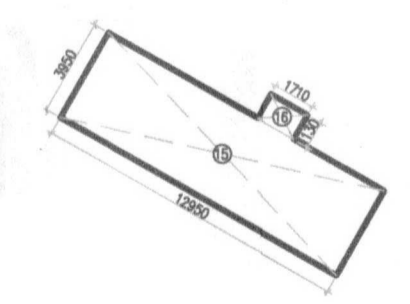
No.	A	B	C	s	AREA OF = (S(A)S(B)S(C))	Area
1	28.225	34.865	12.210	/ 2	37.65	25141.353
2	94.050	77.000	34.865	/ 2	163.8575	1620973.975
3	94.050	74.840	32.465	/ 2	100.6775	1175971.010
4	85.175	74.840	21.100	/ 2	80.5575	421255.633
5	85.175	69.465	14.160	/ 2	74.4	204038.175
6	46.120	39.465	14.545	/ 2	63.39	17698.637
7	39.465	33.350	14.630	/ 2	43.7325	56126.754
8	21.100	20.210	6.090	/ 2	23.985	3749.884
						TOTAL = 4182.815 SQM

1st & 2nd PODIUM AREA (BUILDING - E)

GROSS - A				
1	=	0.5 X	38.240	+ 28.225 X 11.235 = 373.367 SQM
2	=	0.5 X	38.240	+ 46.615 X 18.165 = 777.544 SQM
3	=	0.5 X	52.680	+ 52.705 X 20.190 = 1063.862 SQM
4	=	0.5 X	52.705	+ 61.965 X 8.350 = 478.747 SQM
5	=	0.5 X	61.965	+ 61.880 X 29.870 = 1849.625 SQM
6	=	0.5 X	61.880	X 0.380 = 11.757 SQM
7	=	1 X	1.710	X 1.130 = 1.932 SQM
8	=	1 X	12.950	X 3.950 = 51.153 SQM
x2	=	0.5 X	14.070	X 7.210 = 50.722 SQM
x3	=	0.5 X	12.480	X 9.705 = 60.559 SQM
x4	=	0.5 X	12.480	X 13.810 = 86.174 SQM
x5	=	0.5 X	2.070	X 5.085 = 5.263 SQM
x6	=	0.5 X	2.070	X 5.085 = 5.263 SQM
x7	=	0.5 X	14.905	+ 10.130 X 13.350 = 167.109 SQM
x8	=	0.5 X	1.710	X 1.130 = 0.966 SQM
x9	=	0.5 X	12.950	X 3.950 = 25.576 SQM
				TOTAL = 6003.620 SQM
GROSS - B				
s1	=	0.5 X	14.960	+ 10.870 X 9.390 = 121.272 SQM
s2	=	0.5 X	2.785	+ 5.670 X 2.630 = 11.118 SQM
s3	=	0.5 X	5.670	+ 12.235 X 5.780 = 52.323 SQM
s4	=	0.5 X	12.220	+ 12.235 X 3.005 = 36.744 SQM
s5	=	0.5 X	8.440	+ 8.440 X 2.505 = 21.142 SQM
				TOTAL = 242.599 SQM
NET AREA OF 1st & 2nd PODIUM = GROSS - A + GROSS - B = 6246.219 SQM				

GROUND/STILT FLOOR AREA (BUILDING - E)

GROSS - A				
1	=	1 X	6.360	X 5.025 = 31.969 SQM
2	=	1 X	6.510	X 1.975 = 12.857 SQM
3	=	1 X	0.945	X 1.710 = 1.616 SQM
4	=	1 X	9.100	X 3.320 = 30.212 SQM
5	=	1 X	18.500	X 8.980 = 166.130 SQM
6	=	1 X	7.155	X 3.950 = 28.262 SQM
7	=	1 X	3.595	X 4.320 = 15.530 SQM
8	=	1 X	2.150	X 0.980 = 2.107 SQM
9	=	1 X	2.205	X 3.950 = 8.710 SQM
10	=	1 X	2.450	X 1.150 = 2.818 SQM
11	=	1 X	12.300	X 6.110 = 75.275 SQM
12	=	1 X	8.090	X 2.500 = 20.225 SQM
13	=	1 X	2.400	X 3.720 = 8.928 SQM
14	=	1 X	12.300	X 11.400 = 140.220 SQM
15	=	1 X	12.950	X 3.950 = 51.153 SQM
16	=	1 X	1.710	X 1.130 = 1.932 SQM
				TOTAL = 597.859 SQM
TOTAL FAR AREA OF GROUND/STILT FLOOR (BUILDING - E) = GROSS - A = 597.859 SQM				



STILT FLOOR (BUILDING - E)