

Note :-
1. BUILDING WILL BE DESIGNED (STRUCTURES) AS PER RELEVANT IS CODES FOR EARTH QUAKE RESISTANCE.

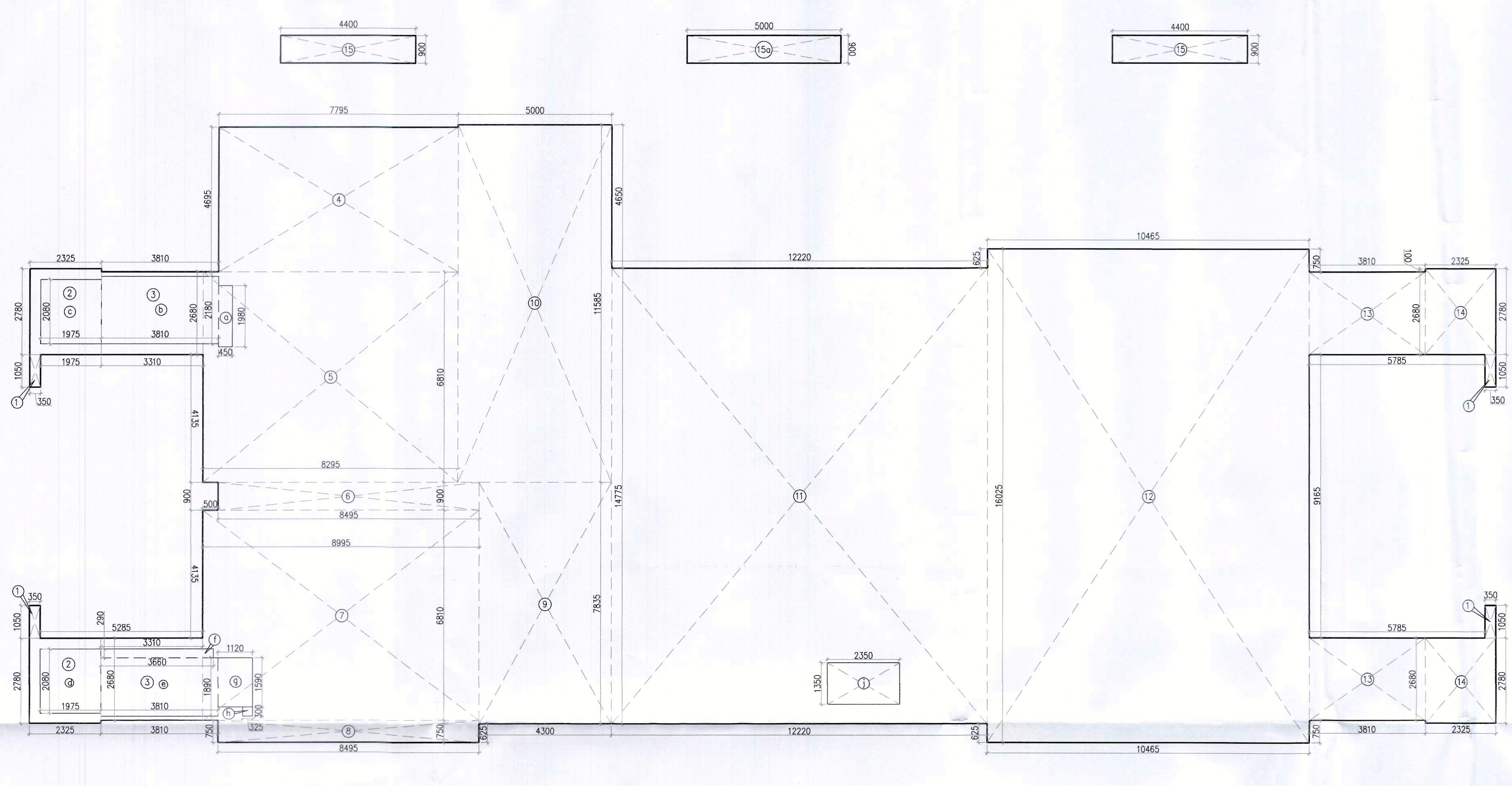
AREA CALCULATION OF STILT FLOOR (TOWER-B)

GROSS - A								
1	4	X	0.350	X	1.050	=	1.470	SGM
2	2	X	2.325	X	2.780	=	12.921	SGM
3	2	X	3.310	X	2.680	=	17.742	SGM
4	1	X	7.795	X	4.695	=	36.598	SGM
5	1	X	8.295	X	8.910	=	74.050	SGM
6	1	X	8.495	X	0.900	=	7.646	SGM
7	1	X	8.995	X	0.910	=	8.186	SGM
8	1	X	8.495	X	0.750	=	6.371	SGM
9	1	X	4.300	X	7.835	=	33.691	SGM
10	1	X	5.000	X	11.985	=	59.925	SGM
11	1	X	12.220	X	14.775	=	180.551	SGM
12	1	X	16.465	X	16.025	=	167.752	SGM
13	2	X	3.810	X	2.680	=	20.422	SGM
14	2	X	3.325	X	2.780	=	18.507	SGM
15	4	X	4.400	X	0.900	=	15.840	SGM
15a	1	X	5.000	X	0.900	=	4.500	SGM
TOTAL					=	894.054	SGM	

GROSS - B								
a	1	X	0.450	X	1.980	=	0.891	SGM
b	1	X	3.810	X	2.180	=	8.306	SGM
c	1	X	1.975	X	2.080	=	4.108	SGM
d	1	X	1.975	X	2.080	=	4.108	SGM
e	1	X	3.810	X	1.890	=	7.201	SGM
f	1	X	3.660	X	0.990	=	3.624	SGM
g	1	X	1.120	X	1.980	=	2.218	SGM
h	1	X	0.325	X	0.300	=	0.098	SGM
i	1	X	2.350	X	1.360	=	3.193	SGM
TOTAL					=	30.728	SGM	

TOTAL FAR AREA OF STILT FLOOR (TOWER-B)			
GROSS - A	=	894.054	SGM
GROSS - B	=	30.728	SGM
TOTAL FAR AREA OF STILT FLOOR (TOWER-B)	=	863.328	SGM

TOTAL NON FAR AREA OF GROUND FLOOR (TOWER-B)			
GROUND COVERAGE	=	1393.235	SGM
FAR AREA	=	863.328	SGM
NON FAR AREA	=	729.907	SGM



STILT FLOOR AREA CALCULATION TOWER - B

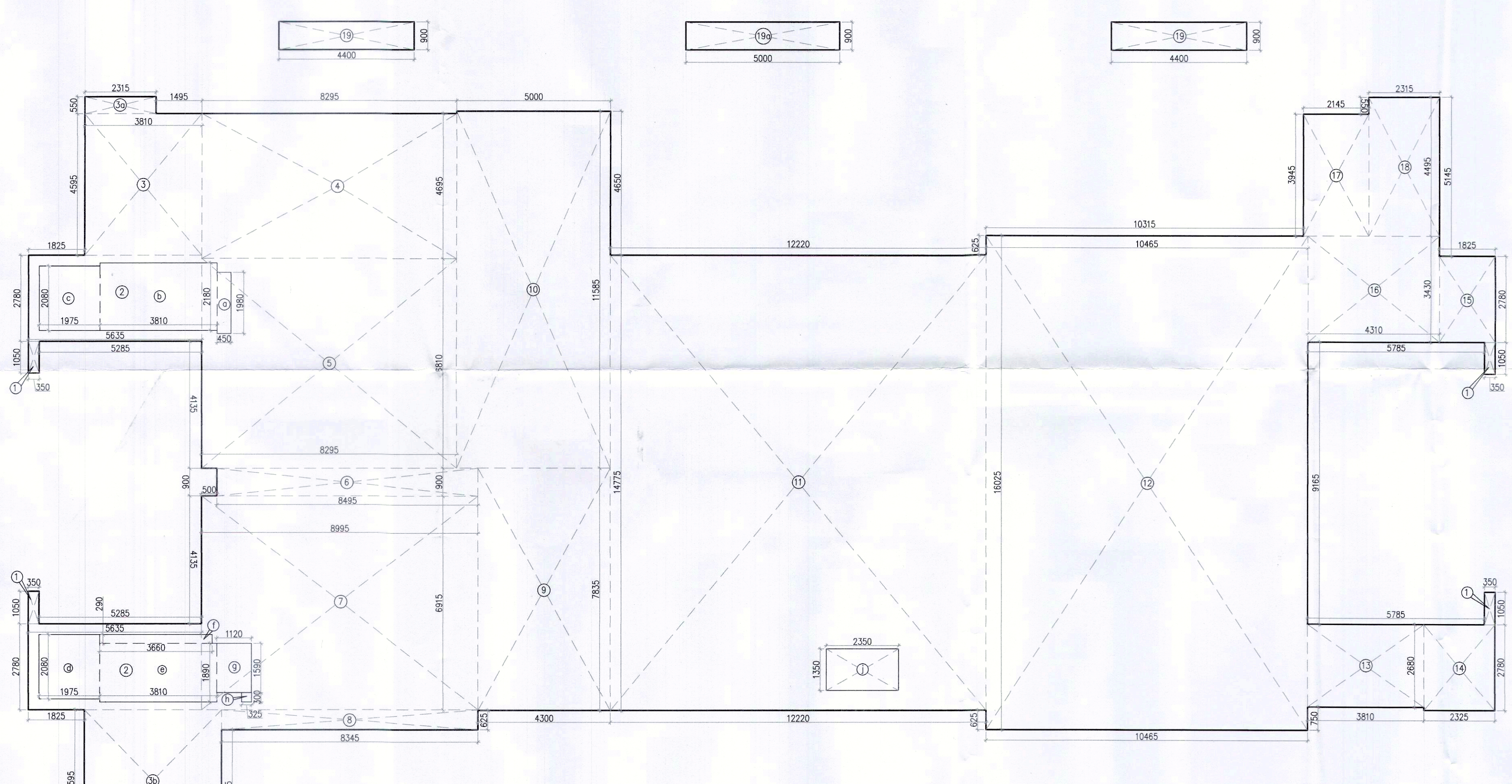
AREA CALCULATION OF STILT FLOOR (TOWER-C)

GROSS - A								
1	4	X	0.350	X	1.050	=	1.470	SGM
2	2	X	2.325	X	2.780	=	12.921	SGM
3	2	X	3.310	X	2.680	=	17.742	SGM
4	1	X	7.795	X	4.695	=	36.598	SGM
5	1	X	8.295	X	8.910	=	74.050	SGM
6	1	X	8.495	X	0.900	=	7.646	SGM
7	1	X	8.995	X	0.910	=	8.186	SGM
8	1	X	8.495	X	0.750	=	6.371	SGM
9	1	X	4.300	X	7.835	=	33.691	SGM
10	1	X	5.000	X	11.985	=	59.925	SGM
11	1	X	12.220	X	14.775	=	180.551	SGM
12	1	X	16.465	X	16.025	=	167.752	SGM
13	2	X	3.810	X	2.680	=	20.422	SGM
14	2	X	3.325	X	2.780	=	18.507	SGM
15	4	X	4.400	X	0.900	=	15.840	SGM
15a	1	X	5.000	X	0.900	=	4.500	SGM
TOTAL					=	894.054	SGM	

GROSS - B								
a	1	X	0.450	X	1.980	=	0.891	SGM
b	1	X	3.810	X	2.180	=	8.306	SGM
c	1	X	1.975	X	2.080	=	4.108	SGM
d	1	X	1.975	X	2.080	=	4.108	SGM
e	1	X	3.810	X	1.890	=	7.201	SGM
f	1	X	3.660	X	0.990	=	3.624	SGM
g	1	X	1.120	X	1.980	=	2.218	SGM
h	1	X	0.325	X	0.300	=	0.098	SGM
i	1	X	2.350	X	1.360	=	3.193	SGM
TOTAL					=	30.728	SGM	

TOTAL FAR AREA OF STILT FLOOR (TOWER-C)			
GROSS - A	=	894.054	SGM
GROSS - B	=	30.728	SGM
TOTAL FAR AREA OF STILT FLOOR (TOWER-C)	=	863.328	SGM

TOTAL NON FAR AREA OF GROUND FLOOR (TOWER-C)			
GROUND COVERAGE	=	1393.235	SGM
FAR AREA	=	863.328	SGM
NON FAR AREA	=	729.907	SGM



STILT FLOOR AREA CALCULATION TOWER - C

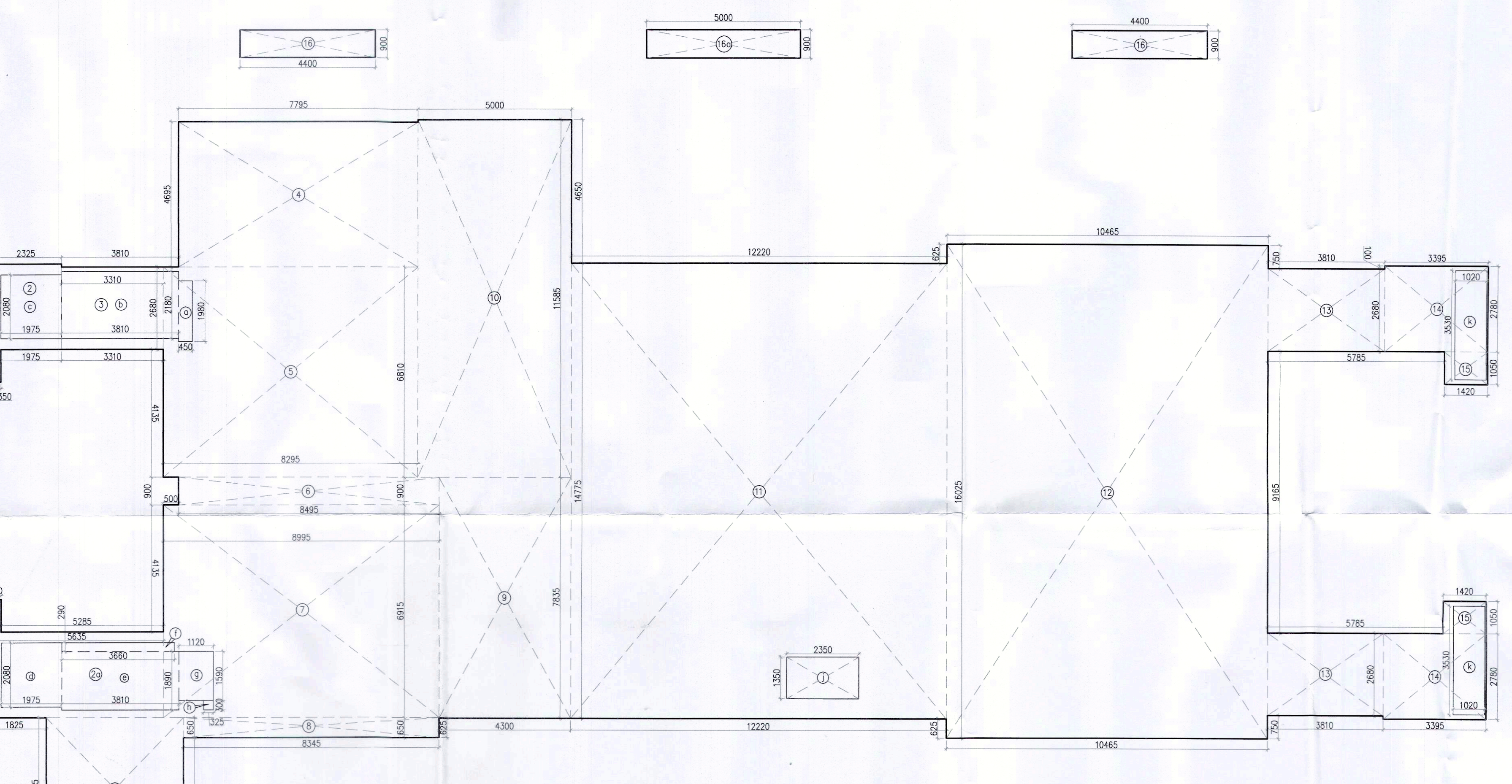
AREA CALCULATION OF STILT FLOOR (TOWER-E)

GROSS - A								
1	2	X	0.350	X	1.050	=	0.735	SGM
2	1	X	2.325	X	2.780	=	6.464	SGM
3	1	X	3.310	X	2.680	=	8.871	SGM
3a	1	X	4.450	X	4.595	=	20.454	SGM
3b	1	X	3.215	X	0.550	=	1.773	SGM
4	1	X	7.795	X	4.695	=	36.598	SGM
5	1	X	8.295	X	8.910	=	74.050	SGM
6	1	X	8.495	X	0.900	=	7.646	SGM
7	1	X	8.995	X	0.910	=	8.186	SGM
8	1	X	8.495	X	0.750	=	6.371	SGM
9	1	X	4.300	X	7.835	=	33.691	SGM
10	1	X	5.000	X	11.985	=	59.925	SGM
11	1	X	12.220	X	14.775	=	180.551	SGM
12	1	X	16.465	X	16.025	=	167.752	SGM
13	2	X	3.810	X	2.680	=	20.422	SGM
14	2	X	3.325	X	2.780	=	18.507	SGM
15	4	X	4.400	X	0.900	=	15.840	SGM
15a	1	X	5.000	X	0.900	=	4.500	SGM
TOTAL					=	724.346	SGM	

GROSS - B								
a	1	X	0.450	X	1.980	=	0.891	SGM
b	1	X	3.810	X	2.180	=	8.306	SGM
c	1	X	1.975	X	2.080	=	4.108	SGM
d	1	X	1.975	X	2.080	=	4.108	SGM
e	1	X	3.810	X	1.890	=	7.201	SGM
f	1	X	3.660	X	0.990	=	3.624	SGM
g	1	X	1.120	X	1.980	=	2.218	SGM
h	1	X	0.325	X	0.300	=	0.098	SGM
i	1	X	2.350	X	1.360	=	3.193	SGM
k	2	X	1.020	X	3.530	=	7.201	SGM
TOTAL					=	37.644	SGM	

TOTAL FAR AREA OF STILT FLOOR (TOWER-E)			
GROSS - A	=	724.346	SGM
GROSS - B	=	37.644	SGM
TOTAL FAR AREA OF STILT FLOOR (TOWER-E)	=	686.702	SGM

TOTAL NON FAR AREA OF GROUND FLOOR (TOWER-E)			
GROUND COVERAGE	=	1491.063	SGM
FAR AREA	=	686.702	SGM
NON FAR AREA	=	714.361	SGM



STILT FLOOR AREA CALCULATION TOWER - E

PROJECT
PROPOSED BUILDING PLAN OF RESIDENTIAL COLONY UNDER NEW INTEGRATED LICENSING POLICY (NILP) DATED 11.05.2022 ON LAND MEASURING 116.29625 ACRES (LICENCE NO. 219 OF 2023 DATED 25-10-23.) (AN AREA MEASURING 103.05625 ACRES MIGRATION FROM LICENCE NO. 27 OF 2012 DATED 02.04.2012 AND 13.24 ACRES AS FRESH AS FRESH APPLIED AREA) IN SECTOR - 76 & 77, GURUGRAM MANESAR URBAN COMPLEX BEING DEVELOPED BY DLF LTD. IN COLLABORATION WITH LAND OWNERS AND IT'S ASSOCIATE COMPANIES

ARCHITECTS
RSMS ARCHITECTS

RSMS ARCHITECTS PVT. LTD.
69, Nora Niwas, Bhawani Kunj
(Behind D2), Vasant Kunj,
New Delhi-110070.
Tel.: 011-26898616, 26898617
www.rsms-arch.com

Consultant Architect
ATP(HQ) (Dinesh Kumar) PA(HQ)
TO BE READ WITH THIS OFFICE MEMO NO. 9037 DATED: 05/04/24

ARCHITECT'S SEAL & SIGNATURE
OWNER'S SEAL & SIGNATURE
For DLF Limited

JAN-2024 Scale : 1:100
Drawing Title:- FAR AREA CALCULATION OF STILT FLOOR (TOWER - B,C & E)
Drawing No:- TA-12
PHASE - VI