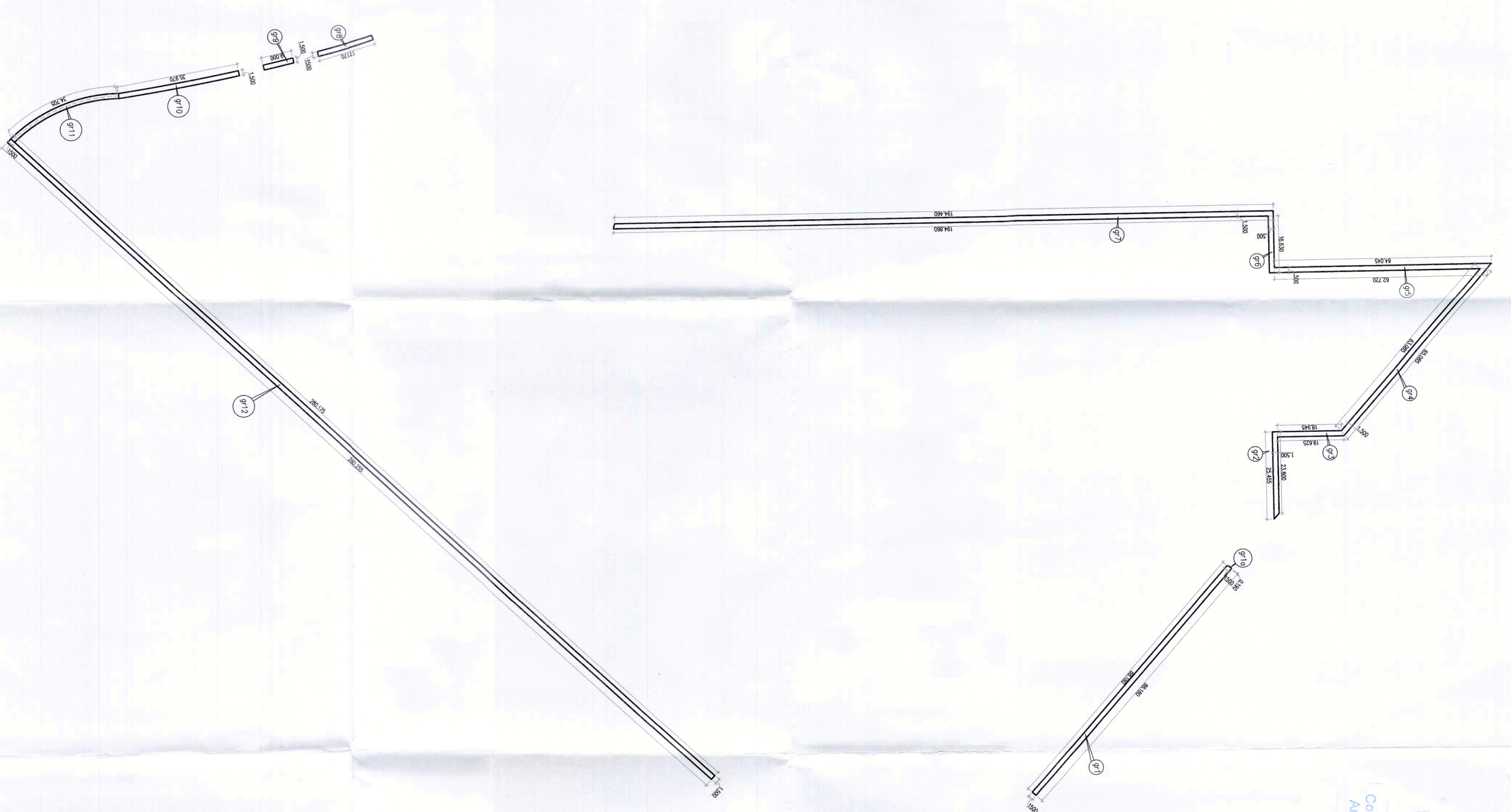
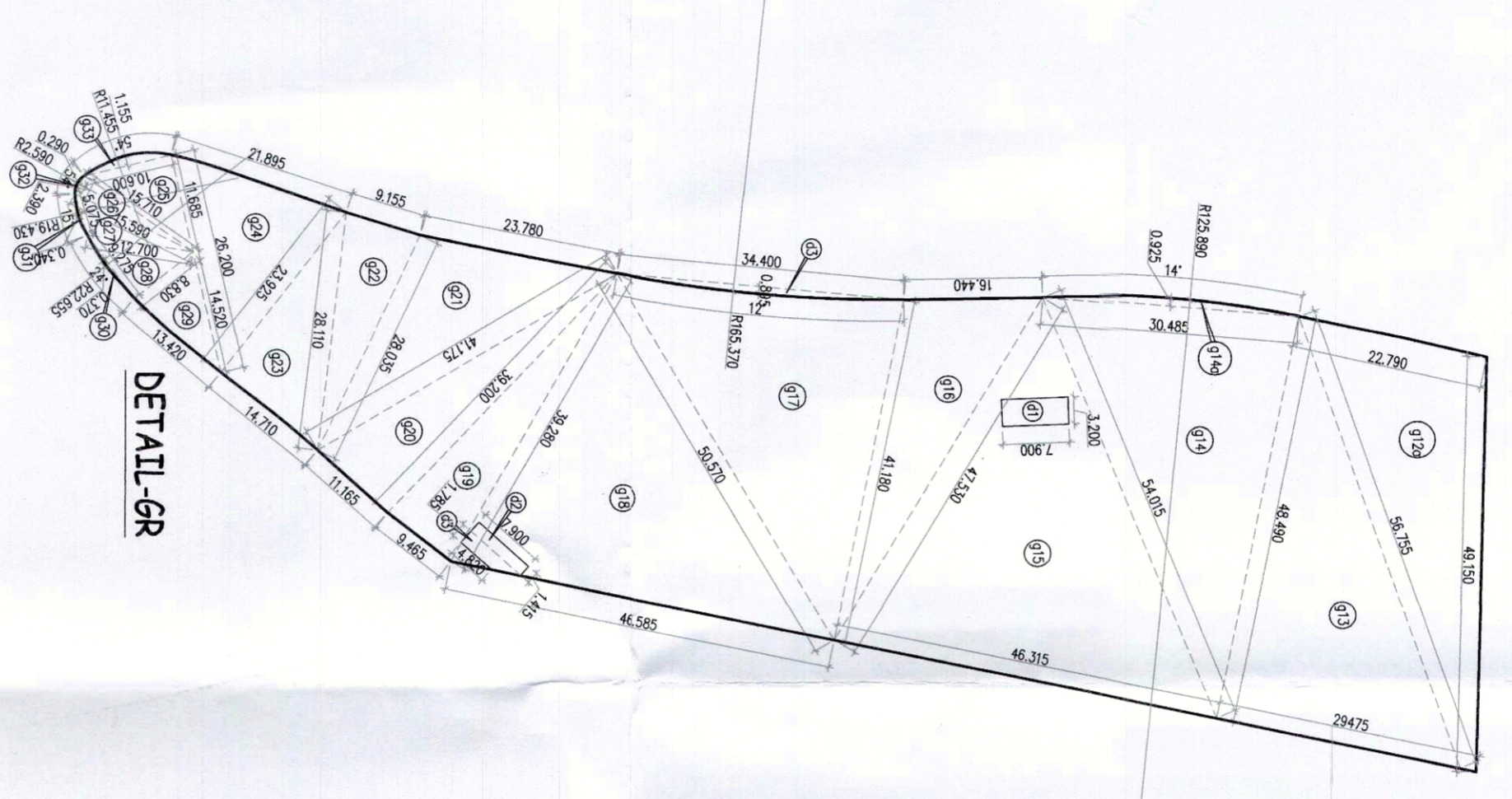


Organized open space i.e. tot lots and play ground calculation (Deduction)					
GROSS - D	=	1	X		
G1	=	0.5	X	68,160	
G2	=	0.5	X	0,150	
G3	=	0.5	X	(23,800+25,455)	
G4	=	0.5	X	(18,945+19,625)	
G5	=	0.5	X	(65,085+63,085)	
G6	=	0.5	X	(62,720+64,045)	
G7	=	1	X	16,630	
G8	=	0.5	X	(194,460+194,860)	
G9	=	1	X	17,770	
G10	=	1	X	9,000	
G11	=	1	X	34,705	
G12	=	0.5	X	(280,175+280,255)	
TOTAL	=			1,500	
TOTAL	=			1,500	

Total Organized open space i.e. tot lots and play ground							
GROSS - A	+						
GROSS - B	+						
GROSS - C	+						
GROSS - D	+						
GROSS - E	+						
SOM	=						
TOTAL	=						

GROSS - B													
G13	49,150	+	56,755	+	22,790	/	2	=	64,348	308558.877	555,484	SQM	
G14	56,755	+	48,400	+	29,475	/	2	=	67,36	510888.637	714,621	SQM	
G15	48,400	+	54,015	+	30,485	/	2	=	66,495	538084.515	729,517	SQM	
G16	42,330	+	41,380	+	16,400	/	2	=	52,375	109211.138	380,477	SQM	
G17	41,380	+	50,57	+	34,400	/	2	=	63,975	499209.915	703,712	SQM	
G18	50,570	+	46,585	+	39,200	/	2	=	68,328	753610.101	868,107	SQM	
G19	39,200	+	9,455	+	39,200	/	2	=	44,979	33981.682	184,343	SQM	
G20	32,380	+	41,175	+	28,110	/	2	=	46,955	109713.956	322,058	SQM	
G21	9,155	+	28,035	+	28,110	/	2	=	32,55	18072.692	128,778	SQM	
G22	28,110	+	14,710	+	21,925	/	2	=	33,173	36564.750	175,968	SQM	
G23	28,110	+	26,200	+	21,925	/	2	=	36,01	60258.830	242,478	SQM	
G24	15,310	+	15,300	+	2,200	/	2	=	16,495	34640.000	18,624	SQM	
G25	15,310	+	15,500	+	2,200	/	2	=	16,895	34640.000	18,624	SQM	
G26	12,700	+	8,830	+	9,275	/	2	=	15,403	1676.374	40,944	SQM	
G27	12,700	+	8,830	+	9,275	/	2	=	15,403	1676.374	40,944	SQM	
G28	13,420	+	14,520	+	8,830	/	2	=	18,985	3371.034	38,083	SQM	
G29	13,420	+	14,520	+	8,830	/	2	=	18,985	3371.034	38,083	SQM	
TOTAL										4482380	5300		

GROSS - C														
G30	156,890	X	158,980	X	158,980	X	15	/	360	-	1,82,285	1	18,724	SQM
G31	158,980	X	158,980	X	158,980	X	15	/	360	-	1,82,285	1	18,724	SQM
G32	158,980	X	158,980	X	158,980	X	15	/	360	-	1,82,285	1	18,724	SQM
G33	158,980	X	158,980	X	158,980	X	15	/	360	-	1,82,285	1	18,724	SQM
G34	158,980	X	158,980	X	158,980	X	15	/	360	-	1,82,285	1	18,724	SQM
G35	158,980	X	158,980	X	158,980	X	15	/	360	-	1,82,285	1	18,724	SQM
G36	158,980	X	158,980	X	158,980	X	15	/	360	-	1,82,285	1	18,724	SQM
G37	158,980	X	158,980	X	158,980	X	15	/	360	-	1,82,285	1	18,724	SQM
G38	158,980	X	158,980	X	158,980	X	15	/	360	-	1,82,285	1	18,724	SQM
G39	158,980	X	158,980	X	158,980	X	15	/	360	-	1,82,285	1	18,724	SQM
G40	158,980	X	158,980	X	158,980	X	15	/	360	-	1,82,285	1	18,724	SQM
G41	158,980	X	158,980	X	158,980	X	15	/	360	-	1,82,285	1	18,724	SQM
G42	158,980	X	158,980	X	158,980	X	15	/	360	-	1,82,285	1	18,724	SQM
G43	158,980	X	158,980	X	158,980	X	15	/	360	-	1,82,285	1	18,724	SQM
TOTAL											32,946	320		



Consultant Architect  
 DTP (H/O)  
 ATP(H/O) (dinesh Kumar Pakhri)  
 S.T.P (H/O) Member Secretary  
 S.T.P (G) Member  
 B.P.A.C. B.P.A.C. B.P.A.C.

TO BE READ WITH THIS OFFICE  
 MEMO NO.: 30/3/24  
 DATE: 05/03/24  
 DTP(H/O) Member B.P.A.C.

PROJECT  
 PROPOSED BUILDING PLAN OF RESIDENTIAL COLONY UNDER INTEGRATED LICENSING POLICY (N/P) DATED 11.08.2022 ON LAND MEASURING 116.26655 ACRES LICENSE NO. 219 OF 2023 DATED 25-10-23/ IN AREA MEASURING 103.6625 ACRES MIGRATION FROM LICENSE NO. 27 OF 2012 DATED 02.04.2012 AND 13.24 ACRES AS FRESH AS FRESH APPLIED AREA IN SECTOR 76 & 77, GURUGRAM MAKESKAR URBAN COMPLEX BEING DEVELOPED BY DLF LTD. IN COLLABORATION WITH LAND OWNERS AND ITS ASSOCIATE COMPANIES  
 ARCHITECTS

RISIMIS ARCHITECTS  
 RISMS ARCHITECTS PVT. LTD.  
 69/Mona Wines Bhowani Kunj (Behind D2), Vasant Kunj, New Delhi-110070.  
 Tel: 011-26898616, 26898617  
 www.risms-drch.com

ARCHITECT'S SEAL & SIGNATURE  
 OWNER'S SEAL & SIGNATURE  
 For DLF Limited  
 JAN-2024  
 Scale - 1:300  
 Drawing No. - ST-08  
 PHASE - VI