

REVISIONS:

1	ISSUED FOR PERMITTING
2	ISSUED FOR CONSTRUCTION
3	ISSUED FOR CONSTRUCTION
4	ISSUED FOR CONSTRUCTION
5	ISSUED FOR CONSTRUCTION
6	ISSUED FOR CONSTRUCTION
7	ISSUED FOR CONSTRUCTION
8	ISSUED FOR CONSTRUCTION
9	ISSUED FOR CONSTRUCTION
10	ISSUED FOR CONSTRUCTION
11	ISSUED FOR CONSTRUCTION
12	ISSUED FOR CONSTRUCTION
13	ISSUED FOR CONSTRUCTION
14	ISSUED FOR CONSTRUCTION
15	ISSUED FOR CONSTRUCTION
16	ISSUED FOR CONSTRUCTION
17	ISSUED FOR CONSTRUCTION
18	ISSUED FOR CONSTRUCTION
19	ISSUED FOR CONSTRUCTION
20	ISSUED FOR CONSTRUCTION
21	ISSUED FOR CONSTRUCTION
22	ISSUED FOR CONSTRUCTION
23	ISSUED FOR CONSTRUCTION
24	ISSUED FOR CONSTRUCTION
25	ISSUED FOR CONSTRUCTION
26	ISSUED FOR CONSTRUCTION
27	ISSUED FOR CONSTRUCTION
28	ISSUED FOR CONSTRUCTION
29	ISSUED FOR CONSTRUCTION
30	ISSUED FOR CONSTRUCTION
31	ISSUED FOR CONSTRUCTION
32	ISSUED FOR CONSTRUCTION
33	ISSUED FOR CONSTRUCTION
34	ISSUED FOR CONSTRUCTION
35	ISSUED FOR CONSTRUCTION
36	ISSUED FOR CONSTRUCTION
37	ISSUED FOR CONSTRUCTION
38	ISSUED FOR CONSTRUCTION
39	ISSUED FOR CONSTRUCTION
40	ISSUED FOR CONSTRUCTION
41	ISSUED FOR CONSTRUCTION
42	ISSUED FOR CONSTRUCTION
43	ISSUED FOR CONSTRUCTION
44	ISSUED FOR CONSTRUCTION
45	ISSUED FOR CONSTRUCTION
46	ISSUED FOR CONSTRUCTION
47	ISSUED FOR CONSTRUCTION
48	ISSUED FOR CONSTRUCTION
49	ISSUED FOR CONSTRUCTION
50	ISSUED FOR CONSTRUCTION

REVISIONS:

1. ISSUED FOR PERMITTING

2. ISSUED FOR CONSTRUCTION

3. ISSUED FOR CONSTRUCTION

4. ISSUED FOR CONSTRUCTION

5. ISSUED FOR CONSTRUCTION

6. ISSUED FOR CONSTRUCTION

7. ISSUED FOR CONSTRUCTION

8. ISSUED FOR CONSTRUCTION

9. ISSUED FOR CONSTRUCTION

10. ISSUED FOR CONSTRUCTION

11. ISSUED FOR CONSTRUCTION

12. ISSUED FOR CONSTRUCTION

13. ISSUED FOR CONSTRUCTION

14. ISSUED FOR CONSTRUCTION

15. ISSUED FOR CONSTRUCTION

16. ISSUED FOR CONSTRUCTION

17. ISSUED FOR CONSTRUCTION

18. ISSUED FOR CONSTRUCTION

19. ISSUED FOR CONSTRUCTION

20. ISSUED FOR CONSTRUCTION

21. ISSUED FOR CONSTRUCTION

22. ISSUED FOR CONSTRUCTION

23. ISSUED FOR CONSTRUCTION

24. ISSUED FOR CONSTRUCTION

25. ISSUED FOR CONSTRUCTION

26. ISSUED FOR CONSTRUCTION

27. ISSUED FOR CONSTRUCTION

28. ISSUED FOR CONSTRUCTION

29. ISSUED FOR CONSTRUCTION

30. ISSUED FOR CONSTRUCTION

31. ISSUED FOR CONSTRUCTION

32. ISSUED FOR CONSTRUCTION

33. ISSUED FOR CONSTRUCTION

34. ISSUED FOR CONSTRUCTION

35. ISSUED FOR CONSTRUCTION

36. ISSUED FOR CONSTRUCTION

37. ISSUED FOR CONSTRUCTION

38. ISSUED FOR CONSTRUCTION

39. ISSUED FOR CONSTRUCTION

40. ISSUED FOR CONSTRUCTION

41. ISSUED FOR CONSTRUCTION

42. ISSUED FOR CONSTRUCTION

43. ISSUED FOR CONSTRUCTION

44. ISSUED FOR CONSTRUCTION

45. ISSUED FOR CONSTRUCTION

46. ISSUED FOR CONSTRUCTION

47. ISSUED FOR CONSTRUCTION

48. ISSUED FOR CONSTRUCTION

49. ISSUED FOR CONSTRUCTION

50. ISSUED FOR CONSTRUCTION



Architect  
**Hafeez**  
Contractor

**RISIMIS ARCHITECTS**  
RSM ARCHITECTS PVT. LTD.  
69, Nura Niwas, Bhawan, Kunj  
(Behind T2), Vasant Kunj  
New Delhi-110070  
Tel: 011-2689816, 2689817  
WWW.RISIMIS-ARCH.COM

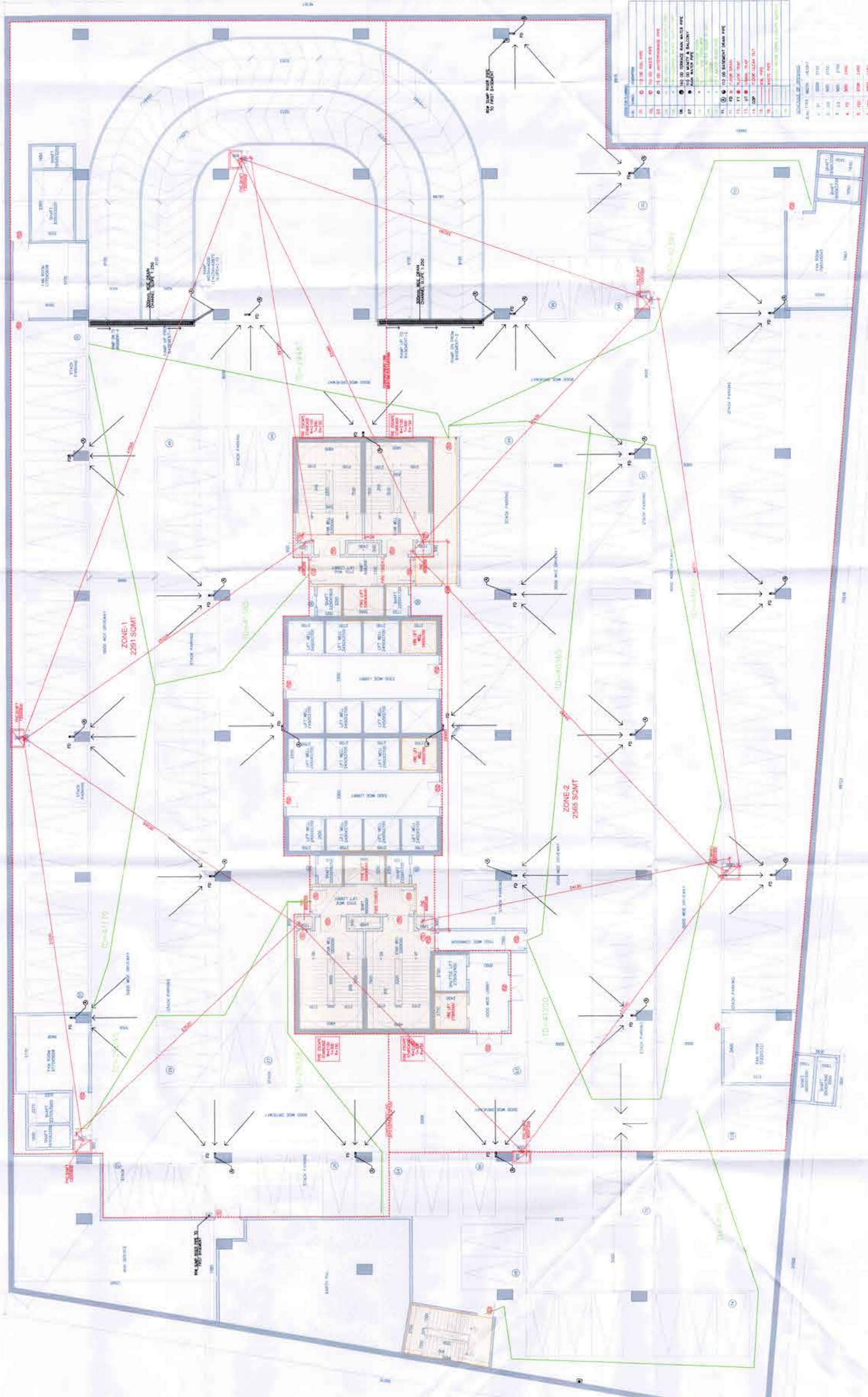
Project:  
REVISED BUILDING PLANS OF BUILDING-B,  
C. D. E. & PARK CYBER CITY UNDER TRANSIT  
ORIENTED DEVELOPMENT (TOD) POLICY FOR  
MX (LAND) USED CATEGORY (008/17/ITES/1-008  
COMMERCIAL) WEIGHING 108.55922 ACRES  
IN SECTORS 24, 25 & 25-A, GURUGRAM  
MANESAR URBAN COMPLEX BEING  
DEVELOPED BY  
DLF CYBER CITY DEVELOPERS LIMITED  
DLF Cyber City Developers Ltd  
10th Floor DLF Gateway Tower,  
DLF Cyber City, Gurugram, Haryana  
Pin-122002

DRAWING TITLE: BASKETBALL COURT (BLOCK-B)

REVISION	DATE	BY	CHECKED BY	APPROVED BY
1	25-04-2022			

ARCHITECT'S SEAL & SIGNATURE

OWNER'S SEAL & SIGNATURE



ALL DIMENSIONS ARE IN METERS