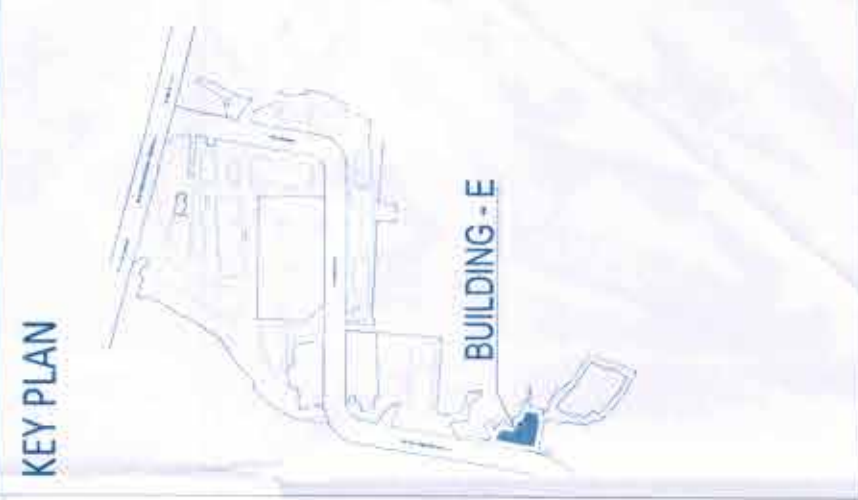


THIS ARCHITECTURAL BUILDING PLAN IS SUBMITTED TO THE OFFICE OF THE MUNICIPAL ENGINEER, DUBLIN, IN SUPPORT OF THE APPLICATION FOR A BUILDING PERMIT FOR THE PROPOSED DEVELOPMENT OF THE PROJECT.

TO BE READ WITH THIS OFFICE DRAWING NO. BS-6E DATED: 28/04/2022

Architect: *[Signature]*  
 Engineer: *[Signature]*  
 Surveyor: *[Signature]*



**Architect**  
**Hafeez Contractor**  
 11, New Park, DUBLIN 15, IRELAND

**RISIMIS ARCHITECTS**  
 RMS ARCHITECTS PVT. LTD.  
 69/Nara Nikas, Bhuvanani Kunj,  
 (H-Block D2), Vasant Kunj,  
 New Delhi-110070  
 Tel: 91-11-26986616, 26988817  
 WWW.RISIMIS-ARCHITECTS.COM

REVISED BUILDING PLANS OF BUILDING - E, C, D, E & F IN CYBER CITY UNDER TRANSIT ORIENTED DEVELOPMENT (TOD) PROJECT FOR ANY LAND USED COLLECTIVELY (7/17ES)/-308 COMMERCIAL) MEASURING 108.53922 ACRES IN SECTOR 24, 25 & 25-A, GURURAM MANESAR URBAN COMPLEX BEING DEVELOPED BY DLF CYBER CITY DEVELOPERS (PVT) LTD.

Client: DLF Cyber City Developers Ltd.  
 10th Floor DLF Gateway Tower,  
 DLF Cyber City Gurugram, Haryana  
 Pin: 122002

**DLF**

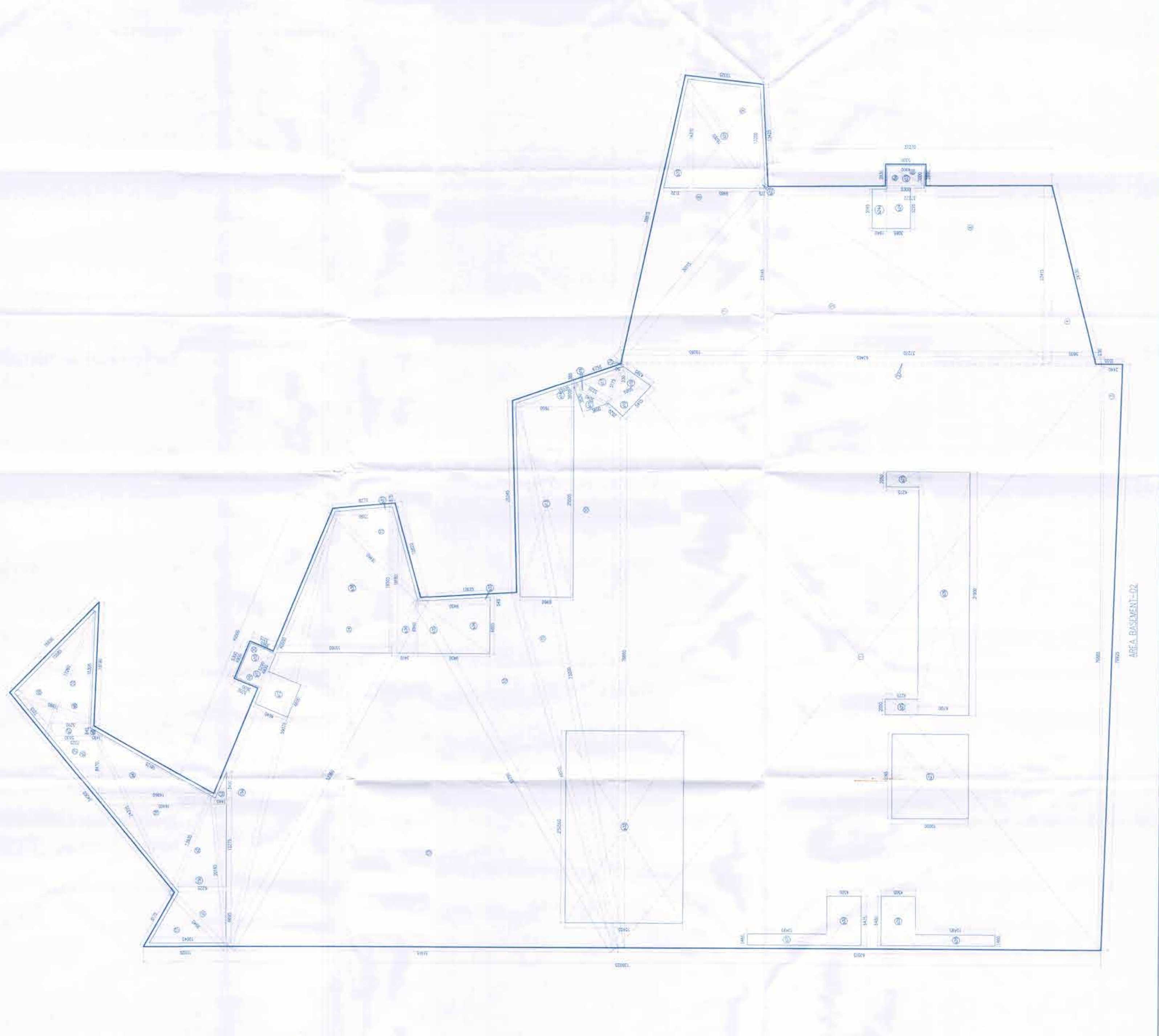
DRAWING TITLE: AREA CALCULATION OF BASEMENT-02 BLOCK-I

REVISION	JOB NO.	PROJ. NO.	DATE
		BS-6E	28-04-2022

SCALE: 1:500

FILE	DEALT BY	CHECKED BY	APPROVED BY
			DRAWER'S SEAL & SIGNATURE

ARCHITECT'S SEAL & SIGNATURE: *[Signature]*



GROSS - A		AREA CALCULATION (BASEMENT-02 BLOCK-I)	
1	1	16.000	4893.061
2	2	14.000	512.000
3	3	14.000	14.000
4	4	14.000	14.000
5	5	14.000	14.000
6	6	14.000	14.000
7	7	14.000	14.000
8	8	14.000	14.000
9	9	14.000	14.000
10	10	14.000	14.000
11	11	14.000	14.000
12	12	14.000	14.000
13	13	14.000	14.000
14	14	14.000	14.000
15	15	14.000	14.000
16	16	14.000	14.000
17	17	14.000	14.000
18	18	14.000	14.000
19	19	14.000	14.000
20	20	14.000	14.000
TOTAL		118.000	4182.361

GROSS - B		AREA CALCULATION (BASEMENT-02 BLOCK-I)	
1	1	14.000	14.000
2	2	14.000	14.000
3	3	14.000	14.000
4	4	14.000	14.000
5	5	14.000	14.000
6	6	14.000	14.000
7	7	14.000	14.000
8	8	14.000	14.000
9	9	14.000	14.000
10	10	14.000	14.000
11	11	14.000	14.000
12	12	14.000	14.000
13	13	14.000	14.000
14	14	14.000	14.000
15	15	14.000	14.000
16	16	14.000	14.000
17	17	14.000	14.000
18	18	14.000	14.000
19	19	14.000	14.000
20	20	14.000	14.000
TOTAL		280.000	3920.000

GROSS - C		AREA CALCULATION (BASEMENT-02 BLOCK-I)	
1	1	14.000	14.000
2	2	14.000	14.000
3	3	14.000	14.000
4	4	14.000	14.000
5	5	14.000	14.000
6	6	14.000	14.000
7	7	14.000	14.000
8	8	14.000	14.000
9	9	14.000	14.000
10	10	14.000	14.000
11	11	14.000	14.000
12	12	14.000	14.000
13	13	14.000	14.000
14	14	14.000	14.000
15	15	14.000	14.000
16	16	14.000	14.000
17	17	14.000	14.000
18	18	14.000	14.000
19	19	14.000	14.000
20	20	14.000	14.000
TOTAL		280.000	3920.000

GROSS - D		AREA CALCULATION (BASEMENT-02 BLOCK-I)	
1	1	14.000	14.000
2	2	14.000	14.000
3	3	14.000	14.000
4	4	14.000	14.000
5	5	14.000	14.000
6	6	14.000	14.000
7	7	14.000	14.000
8	8	14.000	14.000
9	9	14.000	14.000
10	10	14.000	14.000
11	11	14.000	14.000
12	12	14.000	14.000
13	13	14.000	14.000
14	14	14.000	14.000
15	15	14.000	14.000
16	16	14.000	14.000
17	17	14.000	14.000
18	18	14.000	14.000
19	19	14.000	14.000
20	20	14.000	14.000
TOTAL		280.000	3920.000