

KEY PLAN



Architect
Hafeez
Contractor

RISIMIS
ARCHITECTS

RSMS ARCHITECTS PVT. LTD.
69, Hira Khos, Bhawanji Kunj,
(Behind D2), Vasant Kunj,
New Delhi-110070
Tel: 011-26888616, 26888617
www.rsimis-arch.com

REVISOR: BUILDING PLANS OF BUILDING-B,
C, D, E, & FIN CYBER CITY UNDER TRANSIT
ORIENTED DEVELOPMENT (TOD) POLICY FOR
MAY LAND USED COLONY 708 (15/103/1-30%
COMMERCIAL) MEASURING 108.55922 ACRES
IN SECTOR 24, 25 & 25-A, GURUGRAM
DEVELOPED BY
DLF CYBER CITY DEVELOPERS LIMITED

OWNER: DLF Cyber City Developers Ltd
10th Floor DLF Gateway Tower,
DLF Cyber City, Gurgaon, Haryana
Pin-122002

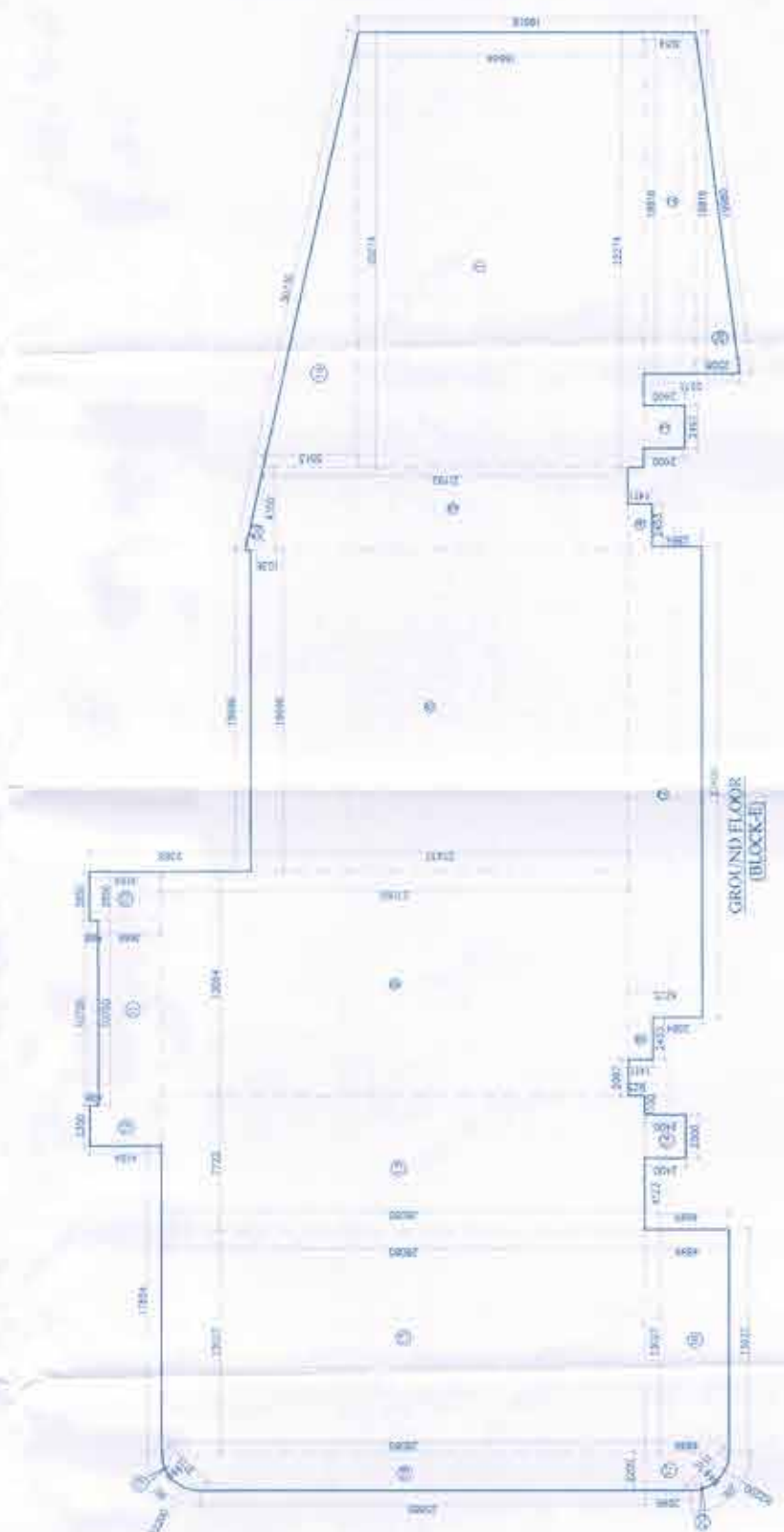
PROJECT TITLE:
AREA CALCULATION OF GROUND COVERAGE,
GROUND FLOOR, 1ST FLOOR,
BLOCK-E

REVISED	DATE NO.	BY	DATE
1	1	DLF	24-4-2022
2	2	DLF	24-4-2022

APPROVED BY:
ARCHITECT'S SEAL & SIGNATURE

GROUND FLOOR	
GROSS - A	GROSS - B
1 = 1 X 25.274 X 18.004 = 419.649 SQM	
1a = 0.5 X 25.274 X 5.513 = 69.668 SQM	
2 = 1 X 19.816 X 3.014 = 59.725 SQM	
2a = 0.5 X 19.816 X 2.558 = 25.345 SQM	
3 = 1 X 2.497 X 5.893 SQM	
4 = 1 X 2.453 X 1.411 = 3.461 SQM	
5 = 1 X 4.750 X 21.952 = 104.272 SQM	
5a = 0.5 X 4.750 X 2.401 = 5.702 SQM	
6 = 1 X 21.952 X 117.134 = 2567.111 SQM	
7 = 1 X 2.453 X 1.411 = 3.461 SQM	
8 = 1 X 15.054 X 27.163 = 408.547 SQM	
10 = 1 X 2.850 X 4.164 = 11.877 SQM	
11 = 1 X 16.750 X 3.698 = 61.910 SQM	
12 = 1 X 2.350 X 4.164 = 9.785 SQM	
13 = 1 X 2.500 X 28.985 = 72.463 SQM	
14 = 1 X 2.500 X 2.000 = 5.000 SQM	
15 = 1 X 13.027 X 28.985 = 376.853 SQM	
16 = 0.5 X (4.699+2.069) X 4.899 = 28.358 SQM	
17 = 0.5 X (28.065+25.850) X 2.200 = 59.367 SQM	
18 = 0.5 X 128.065+25.850 X 2.200 = 158.760 SQM	
TOTAL = 2353.611 SQM	
TOTAL FAR OF GROUND FLOOR = GROSS-A + GROSS-B = 2353.611 SQM	
TOTAL = 2356.369 SQM	

GROUND FLOOR AREA	
GROSS-B	GROSS-C
19 = 3.14 X 2.200 X 0.5 X 3.111 = 1.379 SQM	
20 = 3.14 X 2.200 X 0.5 X 3.111 = 1.379 SQM	
TOTAL = 2.758 SQM	



FIRST FLOOR AREA CALCULATION	
GROSS - A	GROSS - B
1 = 0.5 X 2.200 X 2.200 = 2.420 SQM	
1a = 0.5 X 2.200 X 2.200 = 2.420 SQM	
2 = 1 X 2.200 X 1.809 = 3.979 SQM	
3 = 1 X 20.904 X 4.009 = 83.900 SQM	
3a = 1 X 10.700 X 3.668 = 39.226 SQM	
3b = 1 X 10.700 X 5.484 = 58.750 SQM	
4 = 1 X 23.004 X 10.227 = 235.262 SQM	
5 = 1 X 24.050 X 13.650 = 328.188 SQM	
6 = 1 X 23.004 X 2.609 = 59.982 SQM	
7 = 1 X 8.800 X 2.400 = 21.120 SQM	
8 = 1 X 8.800 X 0.950 = 8.360 SQM	
10 = 1 X 20.850 X 14.900 = 310.665 SQM	
11 = 1 X 6.550 X 2.300 = 15.065 SQM	
12 = 1 X 2.250 X 2.832 = 6.372 SQM	
14 = 1 X 2.510 X 6.484 = 16.275 SQM	
15 = 0.5 X 30.073 X 6.484 = 97.457 SQM	
16 = 1 X 27.563 X 19.697 = 542.908 SQM	
17 = 0.5 X 19.978 X 2.579 = 25.762 SQM	
18 = 1 X 7.585 X 2.579 = 19.562 SQM	
TOTAL = 2088.867 SQM	
BUILT UP AREA OF 1ST FLOOR = 1756.388 SQM	
FAR AREA OF FIRST FLOOR = 2088.867 SQM	
GROSS - A + GROSS - B + GROSS - C = 2756.388 SQM	

TOTAL BUILT UP AREA OF 1ST FLOOR (TOWER-E)	
FAR	GROSS - C
1 = 2 X 5.400 X 4.500 = 48.600 SQM	
2 = 2 X 2.100 X 4.900 = 20.580 SQM	
3 = 2 X 1.100 X 2.066 = 4.518 SQM	
TOTAL = 73.798 SQM	
TOTAL BUILT UP AREA OF 1ST FLOOR (TOWER-E) = FAR + GROSS - C = 1530.186 SQM	

FIRST FLOOR AREA	
GROSS-C	TOTAL
4 = 3.14 X 2.200 X 0.5 X 3.111 = 1.379 SQM	
4a = 3.14 X 2.200 X 0.5 X 3.111 = 1.379 SQM	
TOTAL = 2.758 SQM	

GROUND COVERAGE AREA CALCULATION	
GROSS - A	GROSS - B
1 = 1 X 24.268 X 10.130 = 245.834 SQM	
1a = 0.5 X 24.268 X 4.120 = 49.881 SQM	
2 = 0.5 X 2.400 X 4.208 = 5.059 SQM	
3 = 1 X 37.185 X 57.184 = 2127.111 SQM	
4 = 0.5 X 38.532 X 39.400 = 759.277 SQM	
5 = 1 X 10.974 X 4.854 = 53.079 SQM	
6 = 0.5 X 18.759 X 4.854 = 45.526 SQM	
TOTAL = 3172.497 SQM	
NON FAR AREA ON STILT FLOOR = 5172.497 SQM	
G. COVERAGE = 3172.497 SQM	
GROUND FAR = 2356.371 SQM	

