

DRG NO. BCST-01



Architect Hafeez Contractor
 27 Bala Street, Sector 08, Gurgaon, Haryana, India 122002
 www.hafceez.com

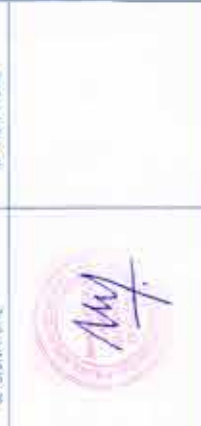
RISIMIS ARCHITECTS
 RSMS ARCHITECTS PVT. LTD.
 68 Nara Mevas (Bhavani Kunj)
 (Behind D2), Vasanti, Kirti Nagar,
 New Delhi - 110070
 Tel: 011-26896616, 26896617
 www.risimis.com

DLF
 DLF Cyber City Developers Ltd.
 10th Floor DLF Gateway Tower,
 DLF Cyber City, Gurgaon,
 Haryana, India 122002

BLOCK-C
 SITE PLAN

REVISION: 1
 JOB NO.: BCST-01
 SCALE: 1:500
 DATE: 25-04-2022

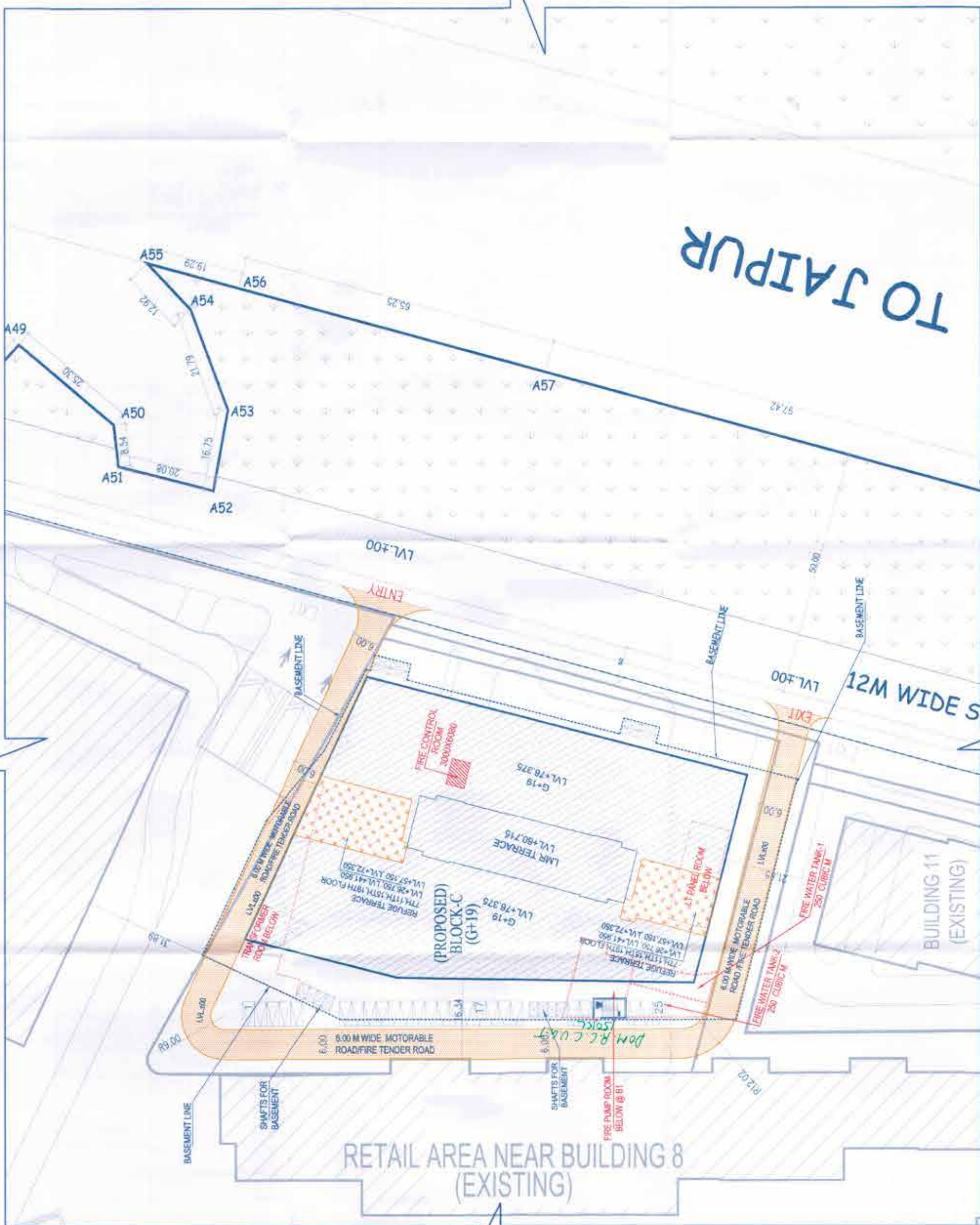
DRAWING TITLE: BLOCK-C SITE PLAN



TO BE READ WITH THIS OFFICE
 MEMO NO.: /122-1-3-2-2
 DATED: 11/01/2022

Checked and found as per Public Health (Amendment) Ordinance and subject to comments of Planning Committee, G.P.O. and N.H.P. Permissible.

FLOOR	NO OF FLOORS	NET AREA OF BASEMENT	SERVICE AREA	NET PARKING AREA	ECS CAPACITY	TYPE OF ECS	ECS PROVIDED	ECS PROVIDED	TOTAL ECS
B	1	5718.287	683.092	6035.196	157		118X2	232	
A	1	6349.038	1328.608	5020.529	157	DOUBLE STACK	118X2	230	
E	1	5887.234	313.164	5574.070	174		127X2	254	
N	1	5887.236	288.162	5599.074	174	SINGLE	130X2	260	
T	1					STILT	25	25	
A							85	85	1696



BLOCK	USAGE	FLOOR	NO OF FLOORS	FAR FLOOR WISE	TOTAL FAR FLOOR WISE	FAR FT. COMMERCIAL	TOTAL FAR-FT. COMMERCIAL	NON FAR AREA	GROUND COVERAGE	BUILTUP AREA
BLOCK-C	COMMERCIAL	GROUND FLOOR	1	607.633	607.633					4674.085
		1st FLOOR	1	1722.624	1722.624					1875.899
		2nd FLOOR	1	4134.665	4134.665					4292.344
		3rd FLOOR	1	4134.665	4134.665					4292.344
		4th FLOOR	1	4134.665	4134.665					4292.344
		5th FLOOR	1	4134.665	4134.665					4292.344
		6th REFUGE FLOOR	1	3824.094	3824.094					3991.179
		7th REFUGE FLOOR	1	3824.094	3824.094					3991.179
		8th REFUGE FLOOR	1	4134.665	4134.665					4292.344
		9th REFUGE FLOOR	1	4134.665	4134.665					4292.344
BLOCK-C	FITTER	10th REFUGE FLOOR	1	3824.094	3824.094					3991.179
		11th REFUGE FLOOR	1	3824.094	3824.094					3991.179
		12th REFUGE FLOOR	1	4134.665	4134.665					4292.344
		13th REFUGE FLOOR	1	4134.665	4134.665					4292.344
BLOCK-C	BASEMENT	BASEMENT-1	1	5718.287	5718.287					413.708
		BASEMENT-2	1	6349.038	6349.038					5718.287
		BASEMENT-3	1	5887.234	5887.234					6349.038
		BASEMENT-4	1	5887.236	5887.236					5887.236
		TOTAL		196722.695						196722.695