

TO BE READ WITH THE OFFICE MEMO NO. 7/22 DATED: 22/07/2022

Architect: **Hafeez Contractor**

Contractor: **DLF Cyber City**

Project: **DLF Cyber City Developers Ltd.**

Location: **DLF Cyber City, Sector 24, Gurgaon, Haryana**

Scale: **1:100**

Date: **22-07-2022**

Project: **DLF Cyber City Developers Ltd.**

Location: **DLF Cyber City, Sector 24, Gurgaon, Haryana**

Scale: **1:100**

Date: **22-07-2022**

KEY PLAN

BUILDING - C



Architect  
**Hafeez Contractor**

**RISIMIS ARCHITECTS**

PSMS ARCHITECTS PVT. LTD.  
68, Nehru Place, New Delhi-110028  
Tel: 011-26888616, 26998617  
www.risimis-arch.com

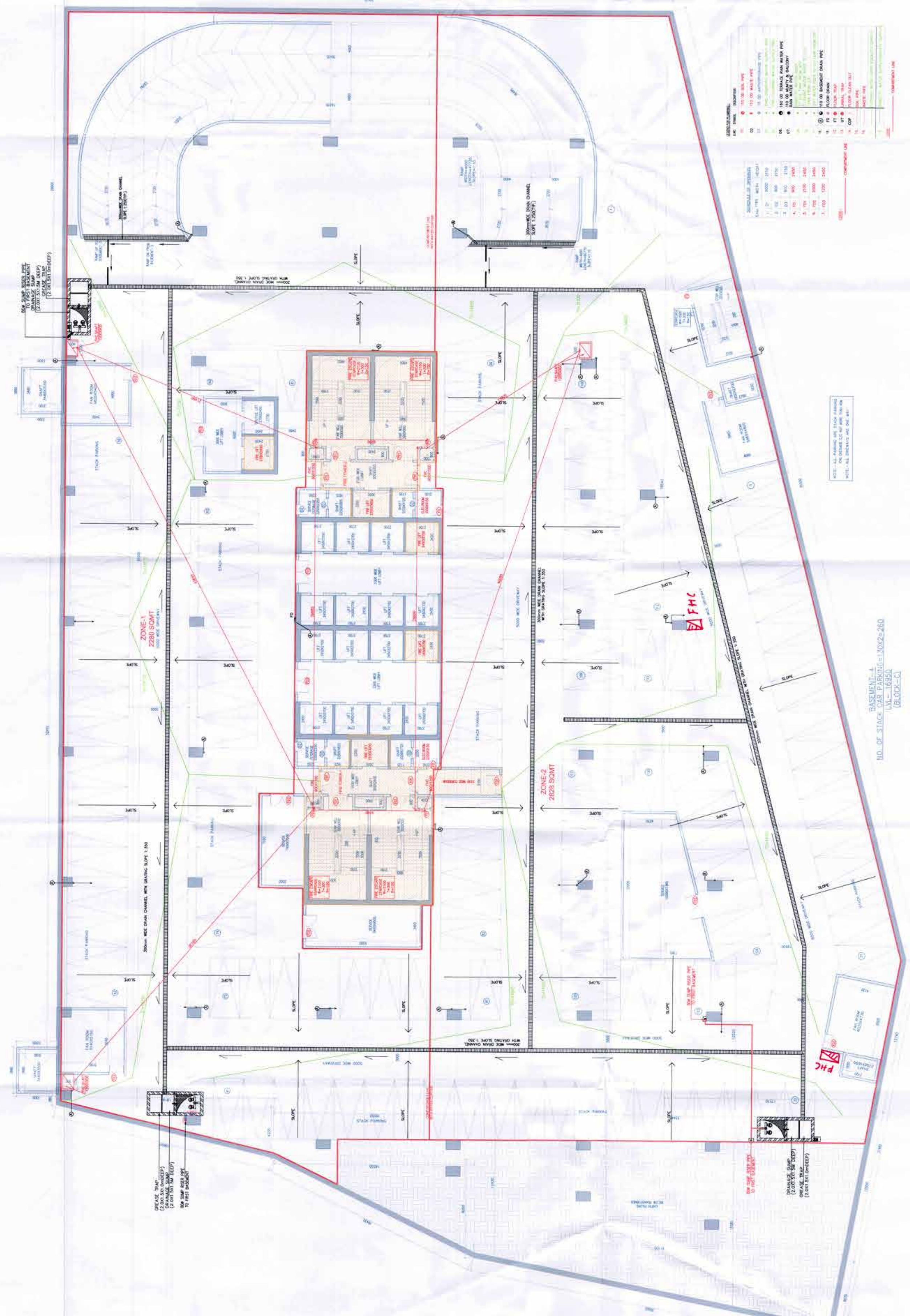
REVISOR: **DLF Cyber City Developers Ltd.**  
10th Floor DLF Gateway Tower  
DLF Cyber City, Sector 24, Gurgaon, Haryana  
Pin: 122002

DLF Cyber City Developers Ltd.  
10th Floor DLF Gateway Tower  
DLF Cyber City, Sector 24, Gurgaon, Haryana  
Pin: 122002

DRAWING TITLE: **BASEMENT-4H BLOCK-C**

REVISION	DATE	BY	APPROVED BY

PROJECT: **DLF Cyber City Developers Ltd.**  
10th Floor DLF Gateway Tower  
DLF Cyber City, Sector 24, Gurgaon, Haryana  
Pin: 122002



NO.	DESCRIPTION	DATE
1	100 TO 1500	22-07-2022
2	1500 TO 2000	22-07-2022
3	2000 TO 2500	22-07-2022
4	2500 TO 3000	22-07-2022
5	3000 TO 3500	22-07-2022
6	3500 TO 4000	22-07-2022
7	4000 TO 4500	22-07-2022
8	4500 TO 5000	22-07-2022
9	5000 TO 5500	22-07-2022
10	5500 TO 6000	22-07-2022
11	6000 TO 6500	22-07-2022
12	6500 TO 7000	22-07-2022
13	7000 TO 7500	22-07-2022
14	7500 TO 8000	22-07-2022
15	8000 TO 8500	22-07-2022
16	8500 TO 9000	22-07-2022
17	9000 TO 9500	22-07-2022
18	9500 TO 10000	22-07-2022
19	10000 TO 10500	22-07-2022
20	10500 TO 11000	22-07-2022
21	11000 TO 11500	22-07-2022
22	11500 TO 12000	22-07-2022
23	12000 TO 12500	22-07-2022
24	12500 TO 13000	22-07-2022
25	13000 TO 13500	22-07-2022
26	13500 TO 14000	22-07-2022
27	14000 TO 14500	22-07-2022
28	14500 TO 15000	22-07-2022
29	15000 TO 15500	22-07-2022
30	15500 TO 16000	22-07-2022
31	16000 TO 16500	22-07-2022
32	16500 TO 17000	22-07-2022
33	17000 TO 17500	22-07-2022
34	17500 TO 18000	22-07-2022
35	18000 TO 18500	22-07-2022
36	18500 TO 19000	22-07-2022
37	19000 TO 19500	22-07-2022
38	19500 TO 20000	22-07-2022
39	20000 TO 20500	22-07-2022
40	20500 TO 21000	22-07-2022
41	21000 TO 21500	22-07-2022
42	21500 TO 22000	22-07-2022
43	22000 TO 22500	22-07-2022
44	22500 TO 23000	22-07-2022
45	23000 TO 23500	22-07-2022
46	23500 TO 24000	22-07-2022
47	24000 TO 24500	22-07-2022
48	24500 TO 25000	22-07-2022
49	25000 TO 25500	22-07-2022
50	25500 TO 26000	22-07-2022
51	26000 TO 26500	22-07-2022
52	26500 TO 27000	22-07-2022
53	27000 TO 27500	22-07-2022
54	27500 TO 28000	22-07-2022
55	28000 TO 28500	22-07-2022
56	28500 TO 29000	22-07-2022
57	29000 TO 29500	22-07-2022
58	29500 TO 30000	22-07-2022
59	30000 TO 30500	22-07-2022
60	30500 TO 31000	22-07-2022
61	31000 TO 31500	22-07-2022
62	31500 TO 32000	22-07-2022
63	32000 TO 32500	22-07-2022
64	32500 TO 33000	22-07-2022
65	33000 TO 33500	22-07-2022
66	33500 TO 34000	22-07-2022
67	34000 TO 34500	22-07-2022
68	34500 TO 35000	22-07-2022
69	35000 TO 35500	22-07-2022
70	35500 TO 36000	22-07-2022
71	36000 TO 36500	22-07-2022
72	36500 TO 37000	22-07-2022
73	37000 TO 37500	22-07-2022
74	37500 TO 38000	22-07-2022
75	38000 TO 38500	22-07-2022
76	38500 TO 39000	22-07-2022
77	39000 TO 39500	22-07-2022
78	39500 TO 40000	22-07-2022
79	40000 TO 40500	22-07-2022
80	40500 TO 41000	22-07-2022
81	41000 TO 41500	22-07-2022
82	41500 TO 42000	22-07-2022
83	42000 TO 42500	22-07-2022
84	42500 TO 43000	22-07-2022
85	43000 TO 43500	22-07-2022
86	43500 TO 44000	22-07-2022
87	44000 TO 44500	22-07-2022
88	44500 TO 45000	22-07-2022
89	45000 TO 45500	22-07-2022
90	45500 TO 46000	22-07-2022
91	46000 TO 46500	22-07-2022
92	46500 TO 47000	22-07-2022
93	47000 TO 47500	22-07-2022
94	47500 TO 48000	22-07-2022
95	48000 TO 48500	22-07-2022
96	48500 TO 49000	22-07-2022
97	49000 TO 49500	22-07-2022
98	49500 TO 50000	22-07-2022
99	50000 TO 50500	22-07-2022
100	50500 TO 51000	22-07-2022

BASEMENT-4  
NO. OF STACK CAR PARKING= 260  
LM= 16450  
(BLOCK-C)