

This is a proposed plan for the purpose of inviting objections from the general public.

SEAL OF PROFESSIONAL ENGINEER  
RAJAT K. KHANNA  
PUNJAB ENGINEERING REGULATORY BOARD  
PUNJAB  
REGISTRATION NO. 015588  
SIGNATURE: Rajat K. Khanna  
Date: 11/01/2021

Architect  
Hafeez  
Contractor

KEY PLAN

Architect  
Hafeez  
Contractor  
29 Bank Street, Borey, 401 B2, 1665089

RISIMIS  
ARCHITECTS

RSMS ARCHITECTS PVT. LTD.  
69, Nara Niwas Bhawani Kunj  
(Behind D2), Vasant Kunj,  
New Delhi - 110070.  
Tel: 011-26898616, 26898617  
www.rsmfms-arch.com

Project:  
PROPOSED BUILDING PLANS OF  
BUILDING - B AND REVISED BUILDING PLANS  
OF BUILDING - C, D, E, & F IN CYBER CITY  
UNDER TRANSIT ORIENTED DEVELOPMENT  
(TOD) POLICY FOR MIX LAND USED  
COLONY (70% IT/ITES / 4-50% COMMERCIAL).  
MEASURING 108.55922 ACRES IN SECTOR 24,  
25 & 25-A, GURUGRAM MANESAR URBAN  
COMPLEX BEING DEVELOPED BY  
DLF CYBER CITY DEVELOPERS LIMITED

OWNER:  
DLF Cyber City Developers Ltd.  
10th Floor DLF Gateway Tower  
DLF Cyber City Gurugram, Haryana  
Pin-122002

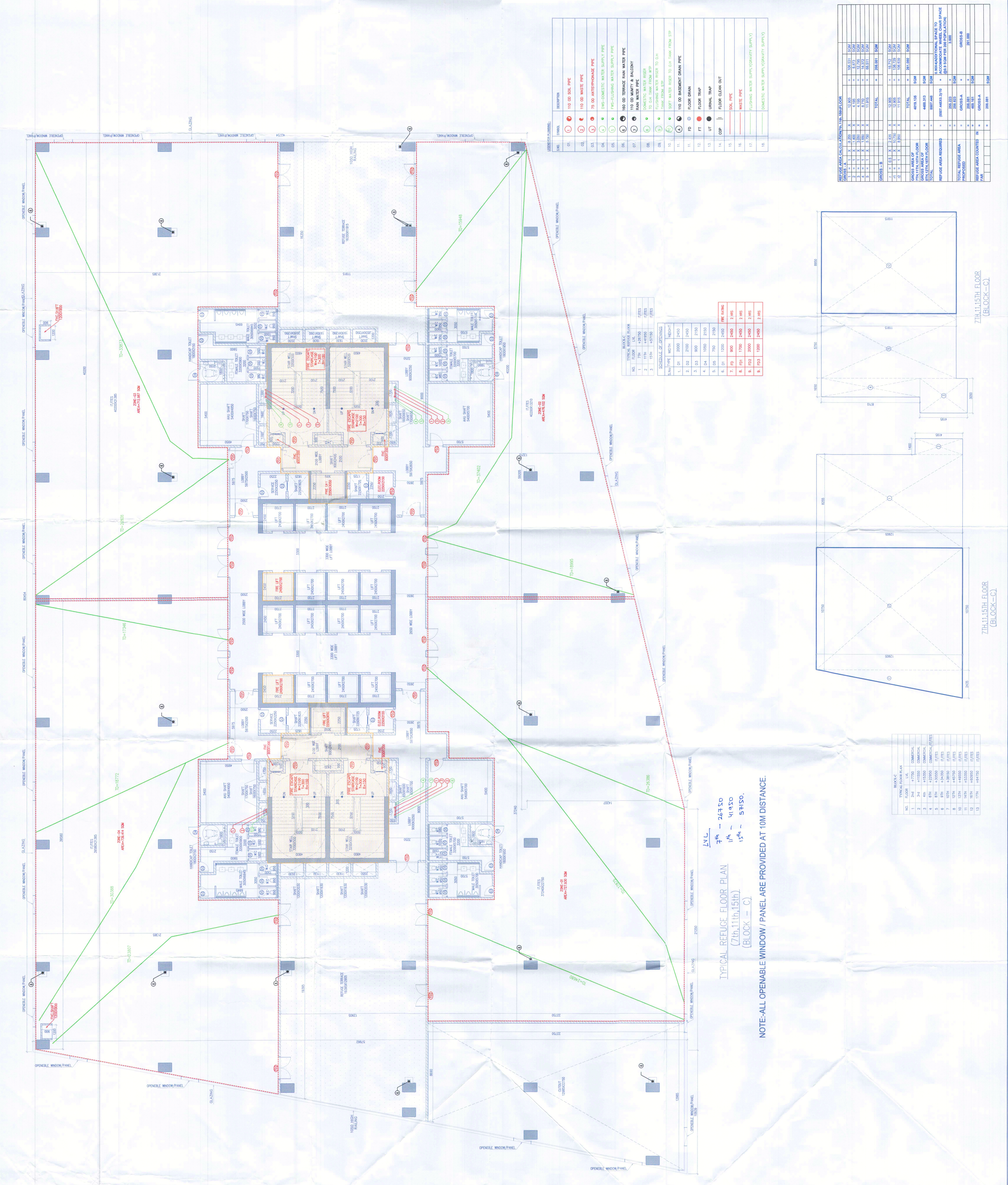
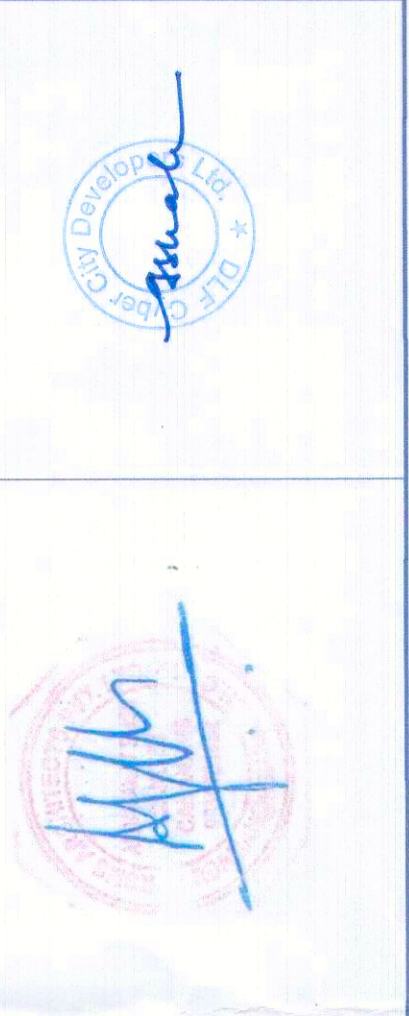
DRAWING TITLE: TYPICAL REFUGE FLOOR (7th, 11th, 15th) FLOOR BLOCK - C

REVISION	JOB NO. -	DATE -	CHECKED BY -	APPROVED BY -
	BC-04	11/01	01-04-2021	

SCALE - 1:100

OWNER'S SEAL & SIGNATURE

ARCHITECT'S SEAL & SIGNATURE



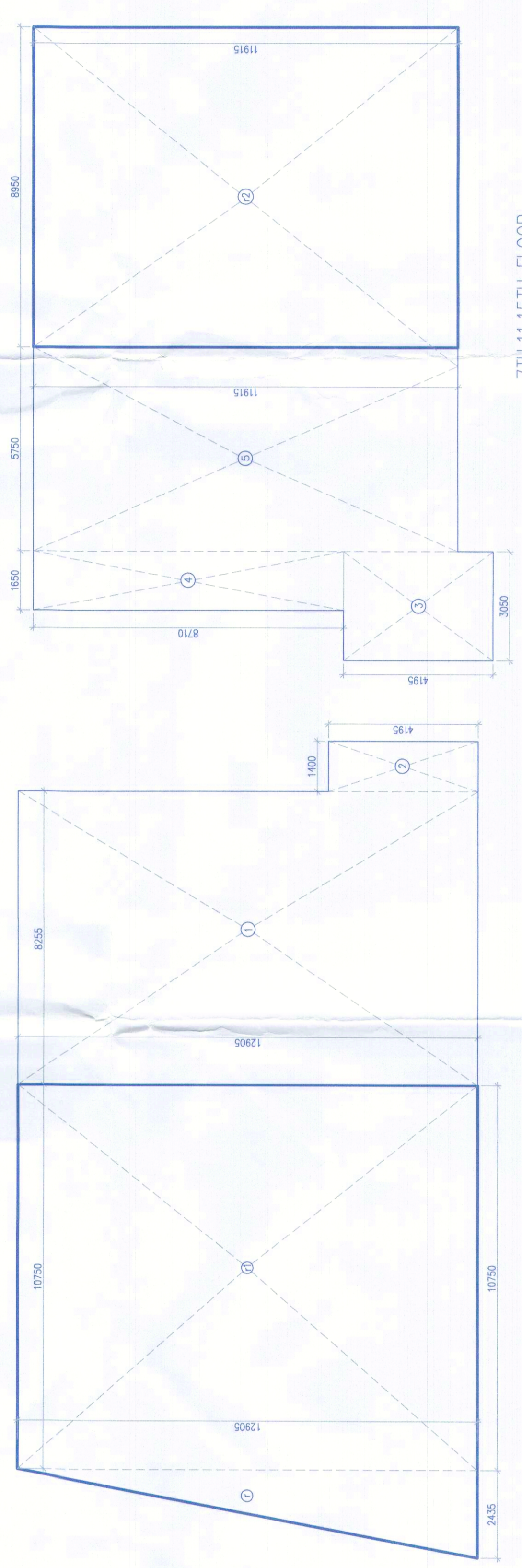
PLAN  
7<sup>th</sup> - 267.50  
11<sup>th</sup> - 419.50  
15<sup>th</sup> - 571.50

TYPICAL REFUGE FLOOR PLAN  
(7th, 11th, 15th)  
(BLOCK - C)

NOTE - ALL OPENABLE WINDOW / PANEL ARE PROVIDED AT 10M DISTANCE.

S/Ns	SYMBOL	DESCRIPTION
01	①	110 ØD SOIL PIPE
02	②	110 ØD WASTE PIPE
03	③	75 ØD ANTI-RIBBOUSE PIPE
04	④	Ø90-Ø100 DOMESTIC WATER SUPPLY PIPE
05	⑤	Ø90-Ø100 FRESH WATER SUPPLY PIPE
06	⑥	110 ØD TORAGE RAIN WATER PIPE
07	⑦	110 ØD MOUNTY & BALCONY RAIN WATER PIPE
08	⑧	110 ØD RAIN WATER RISER TO CH. TANK FROM R.P.
09	⑨	FLUSHING WATER RISER TO CH. TANK FROM S.P.
10	⑩	SOFT WATER RISER TO CH. TANK FROM S.P.
11	⑪	110 ØD BASEMENT DRAIN PIPE
12	⑫	FLOOR DRAIN
13	⑬	FLOOR TRAP
14	⑭	URINAL TRAP
15	⑮	FLOOR CLEAN OUT
16	⑯	WASTE PIPE
17	⑰	FLUSHING WATER SUPPLY (GRAVITY SUPPLY)
18	⑱	DOMESTIC WATER SUPPLY (GRAVITY SUPPLY)

REFUGE AREA CALCULATION (TILTED) FOR REFUGE FLOOR		
1	1	12.800 X 3.600 = 46.080 SQM
2	1	12.800 X 3.600 = 46.080 SQM
3	1	12.800 X 3.600 = 46.080 SQM
4	1	12.800 X 3.600 = 46.080 SQM
5	1	12.800 X 3.600 = 46.080 SQM
6	1	12.800 X 3.600 = 46.080 SQM
7	1	12.800 X 3.600 = 46.080 SQM
8	1	12.800 X 3.600 = 46.080 SQM
9	1	12.800 X 3.600 = 46.080 SQM
10	1	12.800 X 3.600 = 46.080 SQM
11	1	12.800 X 3.600 = 46.080 SQM
12	1	12.800 X 3.600 = 46.080 SQM
13	1	12.800 X 3.600 = 46.080 SQM
14	1	12.800 X 3.600 = 46.080 SQM
15	1	12.800 X 3.600 = 46.080 SQM
16	1	12.800 X 3.600 = 46.080 SQM
17	1	12.800 X 3.600 = 46.080 SQM
18	1	12.800 X 3.600 = 46.080 SQM
19	1	12.800 X 3.600 = 46.080 SQM
20	1	12.800 X 3.600 = 46.080 SQM
21	1	12.800 X 3.600 = 46.080 SQM
22	1	12.800 X 3.600 = 46.080 SQM
23	1	12.800 X 3.600 = 46.080 SQM
24	1	12.800 X 3.600 = 46.080 SQM
25	1	12.800 X 3.600 = 46.080 SQM
26	1	12.800 X 3.600 = 46.080 SQM
27	1	12.800 X 3.600 = 46.080 SQM
28	1	12.800 X 3.600 = 46.080 SQM
29	1	12.800 X 3.600 = 46.080 SQM
30	1	12.800 X 3.600 = 46.080 SQM
31	1	12.800 X 3.600 = 46.080 SQM
32	1	12.800 X 3.600 = 46.080 SQM
33	1	12.800 X 3.600 = 46.080 SQM
34	1	12.800 X 3.600 = 46.080 SQM
35	1	12.800 X 3.600 = 46.080 SQM
36	1	12.800 X 3.600 = 46.080 SQM
37	1	12.800 X 3.600 = 46.080 SQM
38	1	12.800 X 3.600 = 46.080 SQM
39	1	12.800 X 3.600 = 46.080 SQM
40	1	12.800 X 3.600 = 46.080 SQM
41	1	12.800 X 3.600 = 46.080 SQM
42	1	12.800 X 3.600 = 46.080 SQM
43	1	12.800 X 3.600 = 46.080 SQM
44	1	12.800 X 3.600 = 46.080 SQM
45	1	12.800 X 3.600 = 46.080 SQM
46	1	12.800 X 3.600 = 46.080 SQM
47	1	12.800 X 3.600 = 46.080 SQM
48	1	12.800 X 3.600 = 46.080 SQM
49	1	12.800 X 3.600 = 46.080 SQM
50	1	12.800 X 3.600 = 46.080 SQM
51	1	12.800 X 3.600 = 46.080 SQM
52	1	12.800 X 3.600 = 46.080 SQM
53	1	12.800 X 3.600 = 46.080 SQM
54	1	12.800 X 3.600 = 46.080 SQM
55	1	12.800 X 3.600 = 46.080 SQM
56	1	12.800 X 3.600 = 46.080 SQM
57	1	12.800 X 3.600 = 46.080 SQM
58	1	12.800 X 3.600 = 46.080 SQM
59	1	12.800 X 3.600 = 46.080 SQM
60	1	12.800 X 3.600 = 46.080 SQM
61	1	12.800 X 3.600 = 46.080 SQM
62	1	12.800 X 3.600 = 46.080 SQM
63	1	12.800 X 3.600 = 46.080 SQM
64	1	12.800 X 3.600 = 46.080 SQM
65	1	12.800 X 3.600 = 46.080 SQM
66	1	12.800 X 3.600 = 46.080 SQM
67	1	12.800 X 3.600 = 46.080 SQM
68	1	12.800 X 3.600 = 46.080 SQM
69	1	12.800 X 3.600 = 46.080 SQM
70	1	12.800 X 3.600 = 46.080 SQM
71	1	12.800 X 3.600 = 46.080 SQM
72	1	12.800 X 3.600 = 46.080 SQM
73	1	12.800 X 3.600 = 46.080 SQM
74	1	12.800 X 3.600 = 46.080 SQM
75	1	12.800 X 3.600 = 46.080 SQM
76	1	12.800 X 3.600 = 46.080 SQM
77	1	12.800 X 3.600 = 46.080 SQM
78	1	12.800 X 3.600 = 46.080 SQM
79	1	12.800 X 3.600 = 46.080 SQM
80	1	12.800 X 3.600 = 46.080 SQM
81	1	12.800 X 3.600 = 46.080 SQM
82	1	12.800 X 3.600 = 46.080 SQM
83	1	12.800 X 3.600 = 46.080 SQM
84	1	12.800 X 3.600 = 46.080 SQM
85	1	12.800 X 3.600 = 46.080 SQM
86	1	12.800 X 3.600 = 46.080 SQM
87	1	12.800 X 3.600 = 46.080 SQM
88	1	12.800 X 3.600 = 46.080 SQM
89	1	12.800 X 3.600 = 46.080 SQM
90	1	12.800 X 3.600 = 46.080 SQM
91	1	12.800 X 3.600 = 46.080 SQM
92	1	12.800 X 3.600 = 46.080 SQM
93	1	12.800 X 3.600 = 46.080 SQM
94	1	12.800 X 3.600 = 46.080 SQM
95	1	12.800 X 3.600 = 46.080 SQM
96	1	12.800 X 3.600 = 46.080 SQM
97	1	12.800 X 3.600 = 46.080 SQM
98	1	12.800 X 3.600 = 46.080 SQM
99	1	12.800 X 3.600 = 46.080 SQM
100	1	12.800 X 3.600 = 46.080 SQM



BLOCK 'C' REFUGE AREA		
NO.	FLOOR	AREA
1	7 <sup>th</sup>	126,000 SQM
2	11 <sup>th</sup>	238,000 SQM
3	15 <sup>th</sup>	412,000 SQM
4	TOTAL	776,000 SQM

7<sup>th</sup>, 11<sup>th</sup>, 15<sup>th</sup> FLOOR  
(BLOCK - C)

7<sup>th</sup>, 11<sup>th</sup>, 15<sup>th</sup> FLOOR  
(BLOCK - C)