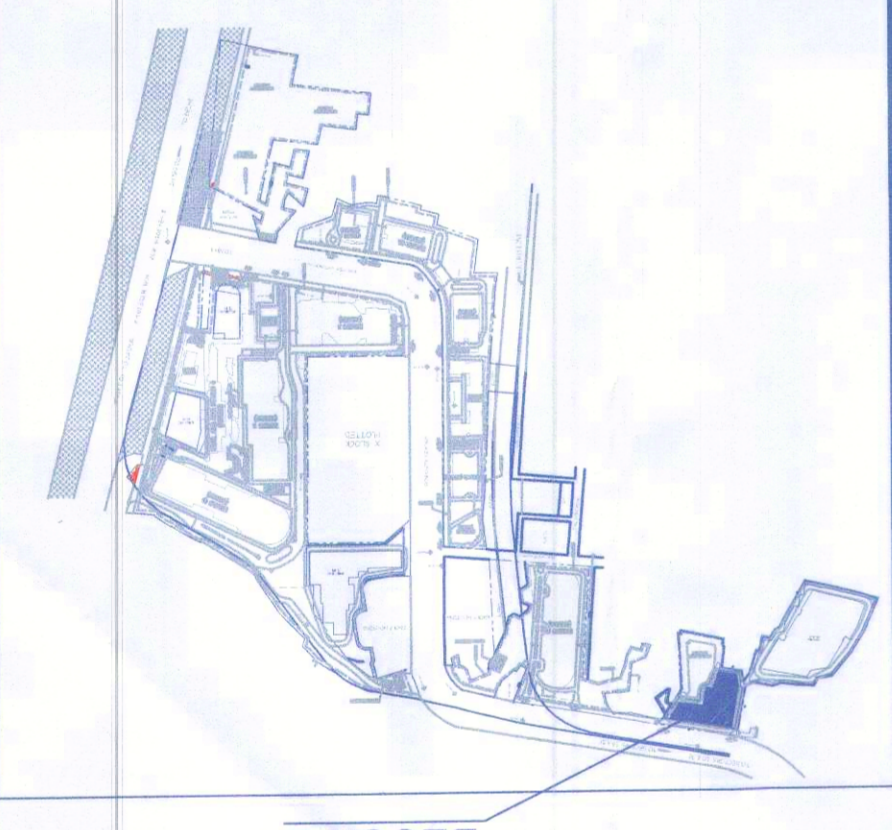


DRG NO. BEST-01

This is a PROVISIONAL BUILDING PLAN approved for the purpose of inviting objections from the general public.

Checked by: *[Signature]*
 Approved by: *[Signature]*
 Date: *[Date]*



Architect
Hateez
Contractor
 RSMIS ARCHITECTS

29 Bank Street, Bombay 400 023, Tel: 661920

RSMIS ARCHITECTS PVT. LTD.
 69, Nona Nivas Bhowani Kunj,
 (Behind D2), Vasant Kunj,
 New Delhi-110070.
 Tel: 011-26898616, 26898617
 www.rsmis-arch.com

PROJECT: PROPOSED BUILDING PLANS OF BUILDING - B AND REVISED BUILDING PLANS OF BUILDING - C, D, E, & F IN CYBER CITY UNDER TRANSIT ORIENTED DEVELOPMENT (TOD) POLICY FOR MIX LAND USED COLONY (70% TIT/ITES/+30% COMMERCIAL) MEASURING 108.5822 ACRES IN SECTOR 24, 25 & 25-A, GURGRAM MANESAR URBAN COMPLEX BEING DEVELOPED BY DLF CYBER CITY DEVELOPERS LIMITED.

OWNER: DLF Cyber City Developers Ltd.
 10th Floor DLF Gateway Tower,
 DLF Cyber City Gurgaon,
 Haryana Pin: 122002

DRAWING TITLE: BLOCK-E SITE PLAN

REVISION: JOB NO. - DATE: - SCALE: -

APPROVED BY: ARCHITECT'S SEAL & SIGNATURE



TO SECTORS 55 & 56

60M WIDE SECTOR ROAD

LVL. +241.80

FLOOR	NO OF FLOORS	NET AREA OF SERVICE AREA	NET PARKING AREA	ECS CAPACITY	TYPE OF ECS	ECS PROVIDED	ECS PROVIDED	TOTAL ECS
BASMENT-1	1	8855.241	501.215	8354.026	261	224.000 X2	448.000	1780
BASMENT-2	1	9917.998	1463.972	8354.026	261	224.000 X2	448.000	1780
BASMENT-3	1	8826.903	641.154	8285.749	259	216.000 X2	432.000	162
BASMENT-4	1	9817.998	1532.249	8285.749	259	216.000 X2	432.000	162
TOTAL					DOUBLE STACK	224.000 X2	448.000	1780
TOTAL					SINGLE	216.000 X2	432.000	162

BLOCK	USAGE	FLOOR	NO OF FLOORS	FAR/FLOOR (WIS)	COMMERCIAL	NON FAR AREA	GROUND COVERAGE
BLOCK - E	IT/ITES/	1st FLOOR	1	2356.371	1756.388	21739.022	2772.079
		2nd FLOOR	1	4622.196	4334.889		
		3rd FLOOR	1	4334.889	4334.889		
		4th FLOOR	1	4334.889	4334.889		
		5th FLOOR	1	4334.889	4334.889		
		6th FLOOR	1	4334.889	4334.889		
		7th REFUGGE FLOOR	1	4052.382	4334.889		
		8th FLOOR	1	4334.889	4334.889		
		9th FLOOR	1	4334.889	4334.889		
		10th FLOOR	1	4334.889	4334.889		
		11th REFUGGE FLOOR	1	4052.382	4334.889		
12th FLOOR	1	4334.889	4334.889				
13th FLOOR	1	4334.889	4334.889				
14th FLOOR	1	4334.889	4334.889				
15th REFUGGE FLOOR	1	4052.382	4334.889				
16th REFUGGE FLOOR	1	4052.382	4334.889				
17th FLOOR	1	4334.889	4334.889				
18th FLOOR	1	4334.889	4334.889				
BASMENT-1							
BASMENT-2							
BASMENT-3							
BASMENT-4							
TOTAL							