

DRG NO. BS-7E

THIS IS A PROVISIONAL BUILDING PLAN approved only for the purpose of inviting objections from the general public.

Architect: Hafeez Contractor
 Contractor: RISIMIS ARCHITECTS

Project: RMS ARCHITECTS PVT. LTD.
 65, Nara Niwas Bhawani Kunj (Behind D2), Vasant Kunj, New Delhi-110070.
 Tel: 011-26898616, 26898617
 www.risimis-arch.com

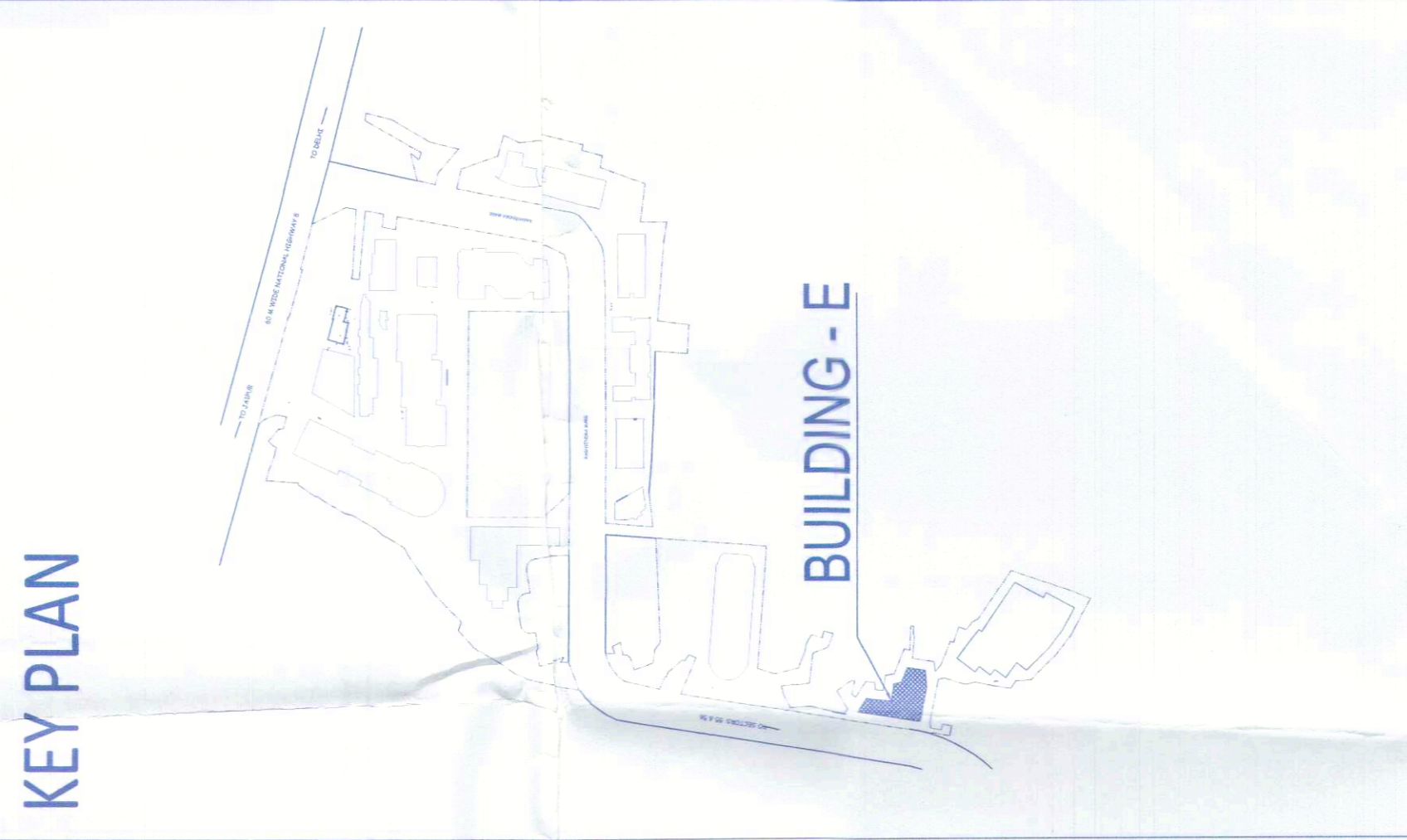
Proposed Building Plans of Building - C, D, E, & F in Cyber City Under Transit Oriented Development (TOD) Policy for Mix Land Use Colony (70% IT/ITES/4-30% Commercial) Measuring 108.55922 Acres in Sector 24, 25 & 25-A, Gurugram Manesar Urban Complex being developed by DLF Cyber City Developers Limited.

Owner: DLF Cyber City Developers Ltd.
 10th Floor DLF Gateway Tower, DLF Cyber City, Gurugram, Haryana Pin: 122002

Drawing Title: AREA CALCULATION OF BASEMENT-03 BLOCK-E

Revision: 408 NO. - BS-7E
 Scale: 1:150
 Date: 01-04-2021

File: DEALT BY: APPROVED BY: OWNER'S SEAL & SIGNATURE



Architect: Hafeez Contractor

RISIMIS ARCHITECTS

RMS ARCHITECTS PVT. LTD.
 65, Nara Niwas Bhawani Kunj (Behind D2), Vasant Kunj, New Delhi-110070.
 Tel: 011-26898616, 26898617
 www.risimis-arch.com

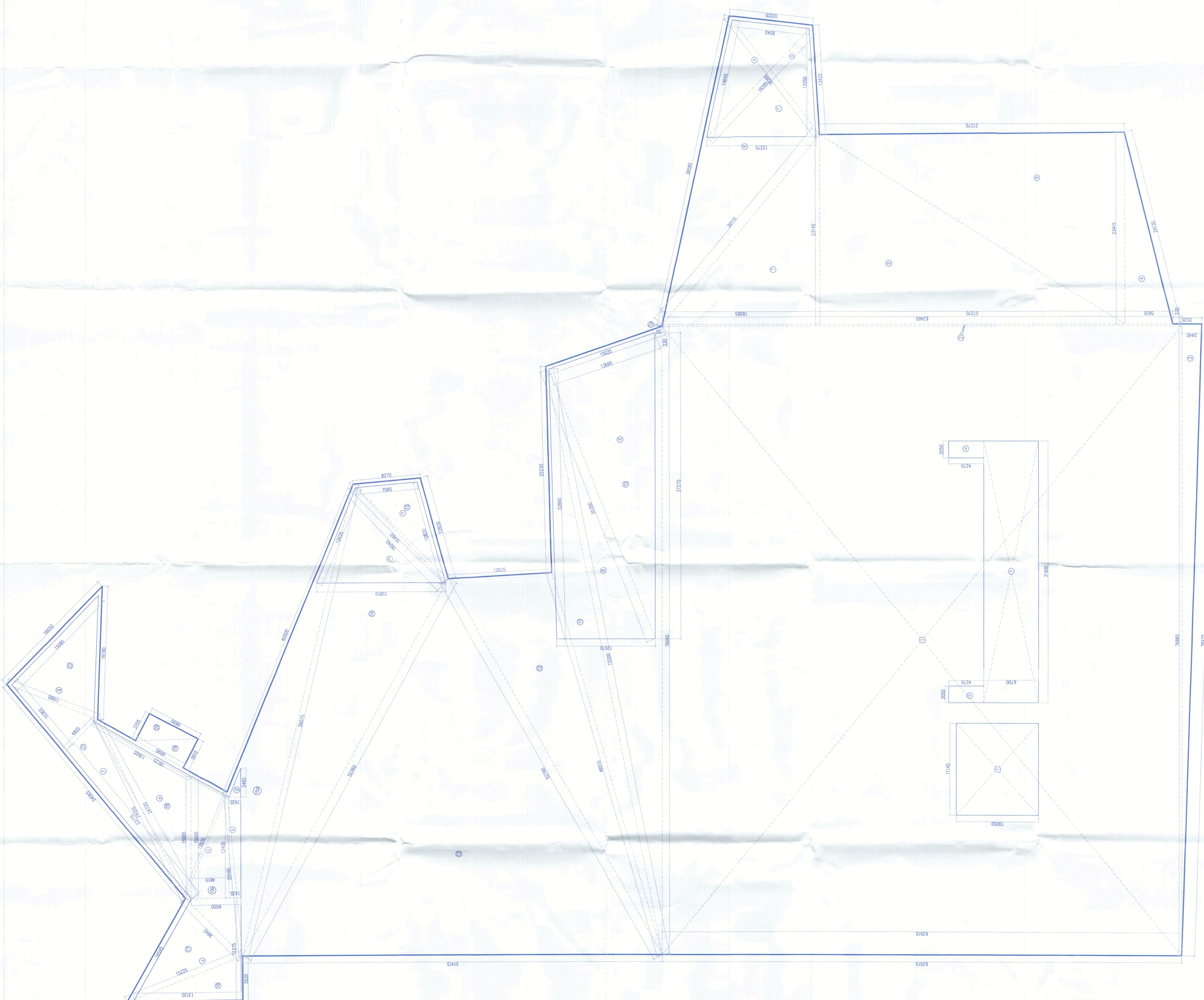
PROPOSED BUILDING PLANS OF BUILDING - B AND REVISED BUILDING PLANS OF BUILDING - C, D, E, & F IN CYBER CITY UNDER TRANSIT ORIENTED DEVELOPMENT (TOD) POLICY FOR MIX LAND USE COLONY (70% IT/ITES/4-30% COMMERCIAL) MEASURING 108.55922 ACRES IN SECTOR 24, 25 & 25-A, GURUGRAM MANESAR URBAN COMPLEX BEING DEVELOPED BY DLF CYBER CITY DEVELOPERS LIMITED

OWNER: DLF Cyber City Developers Ltd.
 10th Floor DLF Gateway Tower, DLF Cyber City, Gurugram, Haryana Pin: 122002

DRAWING TITLE: AREA CALCULATION OF BASEMENT-03 BLOCK-E

REVISION: 408 NO. - BS-7E
 SCALE: 1:150
 DATE: 01-04-2021

FILE: DEALT BY: APPROVED BY: OWNER'S SEAL & SIGNATURE



GROSS - A		GROSS - B		GROSS - C		GROSS - D	
NO.	Area (SOM)	NO.	Area (SOM)	NO.	Area (SOM)	NO.	Area (SOM)
1	63.515	1	76.660	1	43.480	1	4899.860
2	0.230	2	14.597	2	21.008	2	14.597
3	2.440	3	76.885	3	82.448	3	93.800
4	5.835	4	23.145	4	73.470	4	68.313
5	3.720	5	37.270	5	56.963	5	431.307
6	19.265	6	19.265	6	18.775	6	436.339
7	0.050	7	0.050	7	0.050	7	222.844
8	14.185	8	14.185	8	22.013	8	39.257
9	6.695	9	3.910	9	19.858	9	13.089
10	6.690	10	3.705	10	40.070	10	12.393
TOTAL		TOTAL		TOTAL		TOTAL	
= 6201.104		= 6201.104		= 6201.104		= 6201.104	
GROSS-A		GROSS-B		GROSS-C		GROSS-D	
= 6201.104		= 3816.894		= 306.211		= 585.883	
GROSS-1		GROSS-2		GROSS-3		GROSS-4	
= 8926.903		= 343.265		= 297.889		= 297.889	
GROSS-5		GROSS-6		GROSS-7		GROSS-8	
= 641.154		= 8285.749		= 8285.749		= 8285.749	
GROSS-9		GROSS-10		GROSS-11		GROSS-12	
= 641.154		= 8285.749		= 8285.749		= 8285.749	
GROSS-13		GROSS-14		GROSS-15		GROSS-16	
= 8285.749		= 8285.749		= 8285.749		= 8285.749	
GROSS-17		GROSS-18		GROSS-19		GROSS-20	
= 258.830		= 258.830		= 258.830		= 258.830	
GROSS-21		GROSS-22		GROSS-23		GROSS-24	
= 258.830		= 258.830		= 258.830		= 258.830	
GROSS-25		GROSS-26		GROSS-27		GROSS-28	
= 258.830		= 258.830		= 258.830		= 258.830	
GROSS-29		GROSS-30		GROSS-31		GROSS-32	
= 258.830		= 258.830		= 258.830		= 258.830	
GROSS-33		GROSS-34		GROSS-35		GROSS-36	
= 258.830		= 258.830		= 258.830		= 258.830	
GROSS-37		GROSS-38		GROSS-39		GROSS-40	
= 258.830		= 258.830		= 258.830		= 258.830	
GROSS-41		GROSS-42		GROSS-43		GROSS-44	
= 258.830		= 258.830		= 258.830		= 258.830	
GROSS-45		GROSS-46		GROSS-47		GROSS-48	
= 258.830		= 258.830		= 258.830		= 258.830	
GROSS-49		GROSS-50		GROSS-51		GROSS-52	
= 258.830		= 258.830		= 258.830		= 258.830	
GROSS-53		GROSS-54		GROSS-55		GROSS-56	
= 258.830		= 258.830		= 258.830		= 258.830	
GROSS-57		GROSS-58		GROSS-59		GROSS-60	
= 258.830		= 258.830		= 258.830		= 258.830	
GROSS-61		GROSS-62		GROSS-63		GROSS-64	
= 258.830		= 258.830		= 258.830		= 258.830	
GROSS-65		GROSS-66		GROSS-67		GROSS-68	
= 258.830		= 258.830		= 258.830		= 258.830	
GROSS-69		GROSS-70		GROSS-71		GROSS-72	
= 258.830		= 258.830		= 258.830		= 258.830	
GROSS-73		GROSS-74		GROSS-75		GROSS-76	
= 258.830		= 258.830		= 258.830		= 258.830	
GROSS-77		GROSS-78		GROSS-79		GROSS-80	
= 258.830		= 258.830		= 258.830		= 258.830	
GROSS-81		GROSS-82		GROSS-83		GROSS-84	
= 258.830		= 258.830		= 258.830		= 258.830	
GROSS-85		GROSS-86		GROSS-87		GROSS-88	
= 258.830		= 258.830		= 258.830		= 258.830	
GROSS-89		GROSS-90		GROSS-91		GROSS-92	
= 258.830		= 258.830		= 258.830		= 258.830	
GROSS-93		GROSS-94		GROSS-95		GROSS-96	
= 258.830		= 258.830		= 258.830		= 258.830	
GROSS-97		GROSS-98		GROSS-99		GROSS-100	
= 258.830		= 258.830		= 258.830		= 258.830	
GROSS-101		GROSS-102		GROSS-103		GROSS-104	
= 258.830		= 258.830		= 258.830		= 258.830	
GROSS-105		GROSS-106		GROSS-107		GROSS-108	
= 258.830		= 258.830		= 258.830		= 258.830	
GROSS-109		GROSS-110		GROSS-111		GROSS-112	
= 258.830		= 258.830		= 258.830		= 258.830	
GROSS-113		GROSS-114		GROSS-115		GROSS-116	
= 258.830		= 258.830		= 258.830		= 258.830	
GROSS-117		GROSS-118		GROSS-119		GROSS-120	
= 258.830		= 258.830		= 258.830		= 258.830	
GROSS-121		GROSS-122		GROSS-123		GROSS-124	
= 258.830		= 258.830		= 258.830		= 258.830	
GROSS-125		GROSS-126		GROSS-127		GROSS-128	
= 258.830		= 258.830		= 258.830		= 258.830	
GROSS-129		GROSS-130		GROSS-131		GROSS-132	
= 258.830		= 258.830		= 258.830		= 258.830	
GROSS-133		GROSS-134		GROSS-135		GROSS-136	
= 258.830		= 258.830		= 258.830		= 258.830	
GROSS-137		GROSS-138		GROSS-139		GROSS-140	
= 258.830		= 258.830		= 258.830		= 258.830	
GROSS-141		GROSS-142		GROSS-143		GROSS-144	
= 258.830		= 258.830		= 258.830		= 258.830	
GROSS-145		GROSS-146		GROSS-147		GROSS-148	
= 258.830		= 258.830		= 258.830		= 258.830	
GROSS-149		GROSS-150		GROSS-151		GROSS-152	
= 258.830		= 258.830		= 258.830		= 258.830	
GROSS-153		GROSS-154		GROSS-155		GROSS-156	
= 258.830		= 258.830		= 258.830		= 258.830	
GROSS-157		GROSS-158		GROSS-159		GROSS-160	
= 258.830		= 258.830		= 258.830		= 258.830	
GROSS-161		GROSS-162		GROSS-163		GROSS-164	
= 258.830		= 258.830		= 258.830		= 258.830	
GROSS-165		GROSS-166		GROSS-167		GROSS-168	
= 258.830		= 258.830		= 258.830		= 258.830	
GROSS-169		GROSS-170		GROSS-171		GROSS-172	
= 258.830		= 258.830		= 258.830		= 258.830	
GROSS-173		GROSS-174		GROSS-175		GROSS-176	
= 258.830		= 258.830		= 258.830		= 258.830	
GROSS-177		GROSS-178		GROSS-179		GROSS-180	
= 258.830		= 258.830		= 258.830		= 258.830	
GROSS-181		GROSS-182		GROSS-183		GROSS-184	
= 258.830		= 258.830		= 258.830		= 258.830	
GROSS-185		GROSS-186		GROSS-187		GROSS-188	
= 258.830		= 258.830		= 258.830		= 258.830	
GROSS-189		GROSS-190		GROSS-191		GROSS-192	
= 258.830		= 258.830		= 258.830		= 258.830	
GROSS-193		GROSS-194		GROSS-195		GROSS-196	
= 258.830		= 258.830		= 258.830		= 258.830	
GROSS-197		GROSS-198		GROSS-199		GROSS-200	
= 258.830		= 258.830		= 258.830		= 258.830	
GROSS-201		GROSS-202		GROSS-203		GROSS-204	
= 258.830		= 258.830		= 258.830		= 258.830	
GROSS-205		GROSS-206		GROSS-207		GROSS-208	
= 258.830		= 258.830		= 258.830		= 258.830	
GROSS-209		GROSS-210		GROSS-211		GROSS-212	
= 258.830		= 258.830		= 258.830		= 258.830	
GROSS-213		GROSS-214		GROSS-215		GROSS-216	
= 258.830		= 258.830		= 258.830		= 258.830	
GROSS-217		GROSS-218		GROSS-219		GROSS-220	
= 258.830		= 258.830		= 258.830		= 258.830	
GROSS-221		GROSS-222		GROSS-223		GROSS-224	
= 258.830		= 258.830		= 258.830		= 258.830	
GROSS-225		GROSS-226		GROSS-227		GROSS-228	
= 258.830		= 258.830		= 258.830		= 258.830	
GROSS-229		GROSS-230		GROSS-231		GROSS-232	
= 258.830		= 258.830		= 258.830		= 258.830	
GROSS-233		GROSS-234		GROSS-235		GROSS-236	
= 258.830		= 258.830		= 258.830		= 258.830	
GROSS-237		GROSS-238		GROSS-239		GROSS-240	
= 258.830		= 258.830		= 258.830		= 258.830	
GROSS-241		GROSS-242		GROSS-243		GROSS-244	
= 258.830		= 258.830		= 258.830		= 258.830	
GROSS-245		GROSS-246		GROSS-247		GROSS-248	
= 258.830		= 258.830		= 258.830		= 258.830	
GROSS-249		GROSS-250		GROSS-251		GROSS-252	
= 258.830		= 258.830		= 258.830		= 258.830	
GROSS-253		GROSS-254		GROSS-255		GROSS-256	
= 258.830		= 258.830		= 258.830		= 258.830	
GROSS-257		GROSS-258		GROSS-259		GROSS-260	
= 258.830		= 258.830		= 258.830		= 258.830	
GROSS-261		GROSS-262		GROSS-263		GROSS-264	
= 258.830		= 258.830		= 258.830		= 258.830	
GROSS-265		GROSS-266		GROSS-267		GROSS-268	
= 258.830		= 258.830		= 258.830		= 258.830	
GROSS-269		GROSS-270		GROSS-271		GROSS-272	
= 258.830		= 258.830		= 258.830		= 258.830	
GROSS-273		GROSS-274		GROSS-275		GROSS-276	
= 258.830		= 258.830		= 258.830		= 258.830	
GROSS-277		GROSS-278		GROSS-279		GROSS-280	
= 258.830		= 258.830		= 258.830		= 258.830	