



**Architect**  
**Hafeez Contractor**  
29 Park Street, Bhubaneswar (B2), INDIA

**RISIMIS ARCHITECTS**

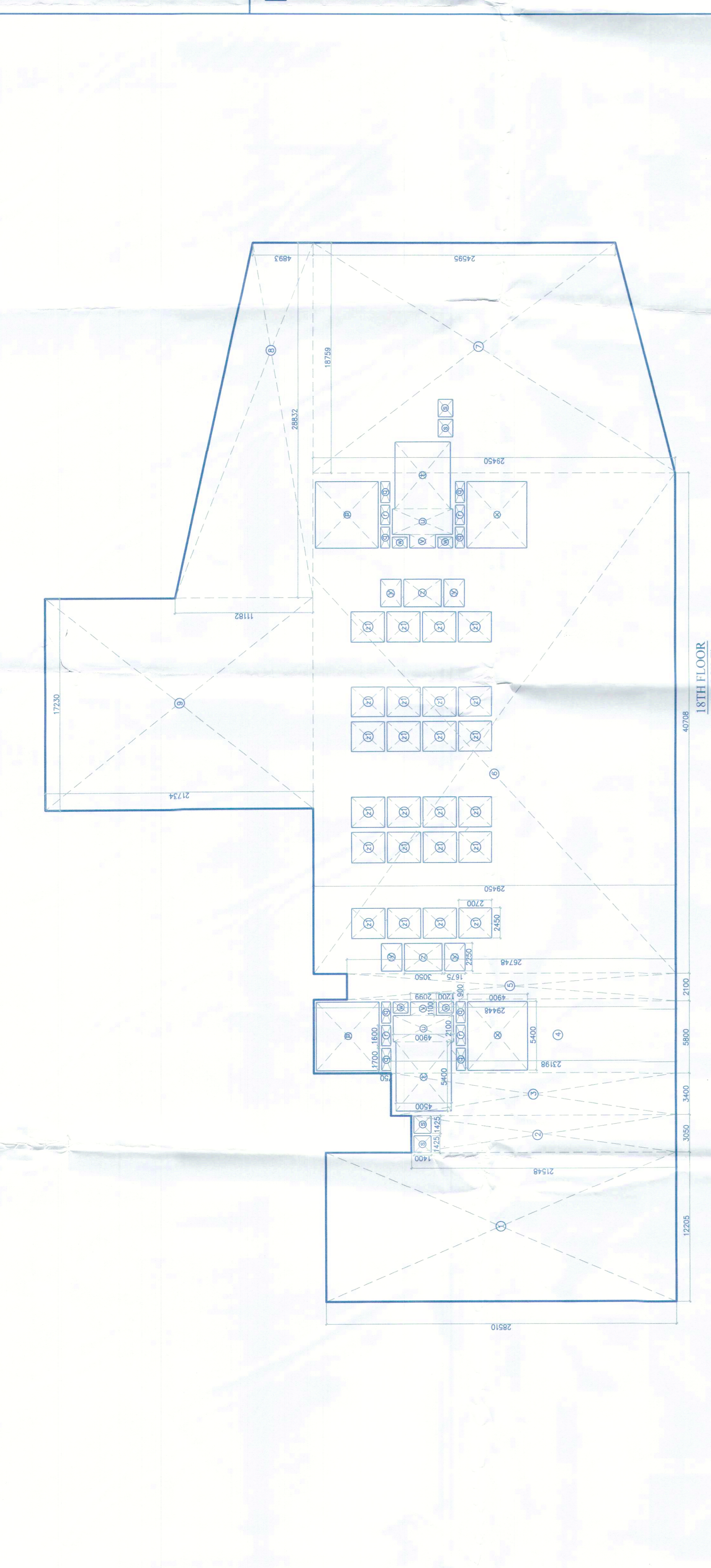
RSMS ARCHITECTS PVT. LTD.  
69, Nara Niwas Bhawan, Kuri (Behind D2), Vasant Kunj, New Delhi-110070.  
Tel: 011-26898616, 26898617  
www.rsms-arch.com

PROPOSED BUILDING PLANS OF BUILDING - B AND REVISED BUILDING PLANS OF BUILDING - C, D, E, & F IN CYBER CITY UNDER TRANSIT ORIENTED DEVELOPMENT (TOD) POLICY FOR MIX LAND USE COLONY (70% IT/ITES / 30% COMMERCIAL) MEASURING 108.55922 ACRES IN SECTOR 24, 25 & 25-A, GURUGRAM MANESAR URBAN DLF CYBER CITY DEVELOPERS LIMITED

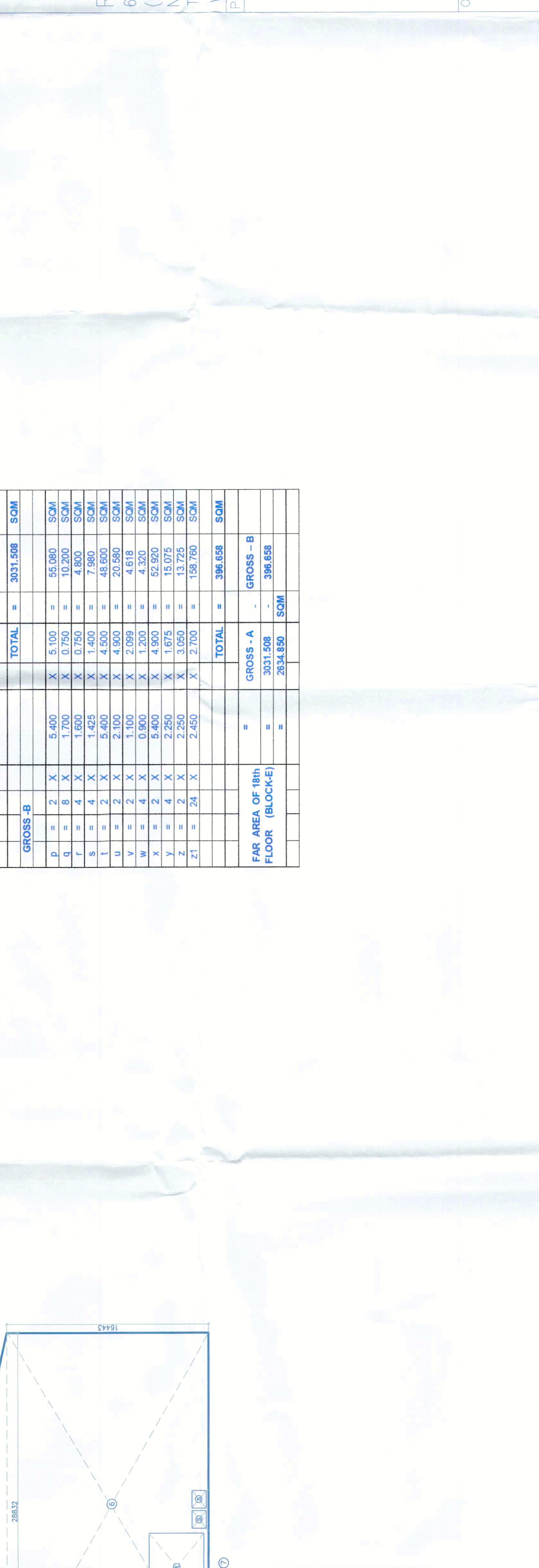
OWNER: DLF Cyber City Developers Ltd.  
10th Floor DLF Gateway Tower, DLF Cyber City, Gurugram, Haryana Pin: 122002

DRAWING TITLE: AREA CALCULATION OF 18TH FLOOR TYPICAL REFUGEE FLOOR (BLOCK-E)

REVISION	JOB NO. - BE-09	DRG NO. - BE-09	NORTH -
FILE -	SCALE - 1:300	DATE - 24/04/2023	APPROVED BY -
DEALT BY -	CHECKED BY -	OWNER'S SEAL & SIGNATURE	APPROVED BY -

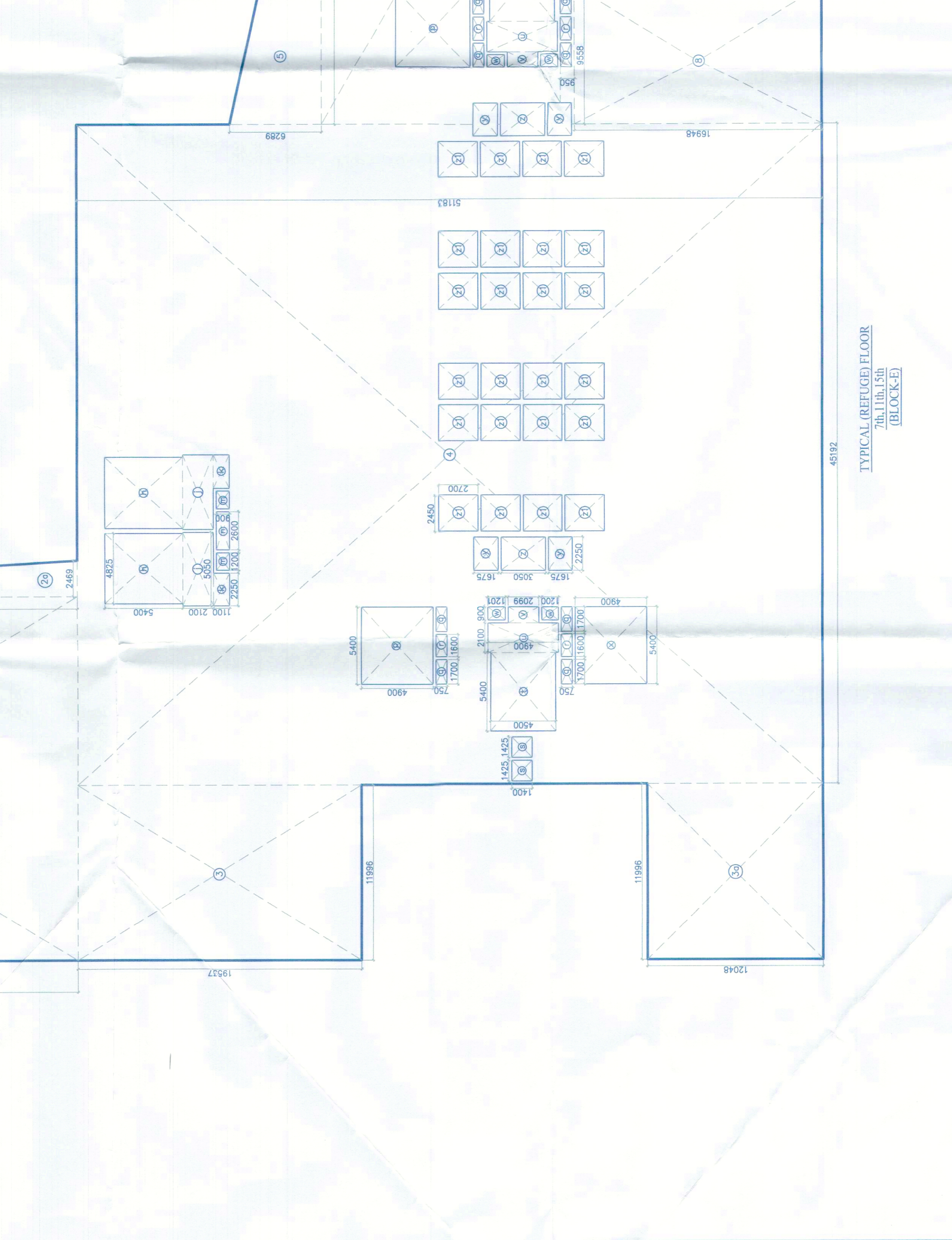


GROSS - A			GROSS - B		
1	=	1 X 12.208 X 28.510 = 347.995 SQM	1	=	2 X 5.645 X 5.105 = 58.025 SQM
2	=	1 X 3.400 X 21.198 = 72.073 SQM	2	=	6 X 1.200 X 0.750 = 4.500 SQM
3	=	1 X 5.800 X 29.448 = 170.788 SQM	3	=	4 X 1.425 X 1.400 = 7.980 SQM
4	=	1 X 2.100 X 26.748 = 56.171 SQM	4	=	2 X 2.100 X 4.900 = 20.580 SQM
5	=	1 X 2.100 X 18.250 = 38.325 SQM	5	=	2 X 1.100 X 2.099 = 4.618 SQM
6	=	0.5 X (29.450+24.950) X 18.250 = 506.915 SQM	6	=	4 X 0.900 X 1.200 = 4.320 SQM
7	=	0.5 X (11.189+4.883) X 28.832 = 231.737 SQM	7	=	4 X 2.250 X 1.875 = 16.875 SQM
8	=	1 X 21.734 X 374.477 = 8138.978 SQM	8	=	2 X 2.450 X 2.700 = 13.260 SQM
9	=	1 X 17.230 X 374.477 = 6451.912 SQM	9	=	2 X 2.450 X 2.700 = 13.260 SQM
<b>TOTAL = 3051.508 SQM</b>			<b>TOTAL = 398.658 SQM</b>		



GROSS - A			GROSS - B		
1	=	1 X 0.3 X 24.884 X 10.338 = 128.114 SQM	1	=	1 X 0.907 X 4.800 = 4.352 SQM
2	=	1 X 24.885 X 4.728 = 117.634 SQM	2	=	1 X 1.200 X 1.200 = 1.440 SQM
3	=	1 X 11.950 X 18.537 = 221.496 SQM	3	=	1 X 4.800 X 5.700 = 27.360 SQM
4	=	1 X 11.950 X 12.048 = 143.938 SQM	4	=	1 X 4.800 X 4.400 = 21.120 SQM
5	=	1 X 28.332 X 8.989 = 254.862 SQM	5	=	1 X 0.900 X 2.700 = 2.430 SQM
6	=	1 X 28.332 X 18.643 = 528.188 SQM	6	=	1 X 1.200 X 2.100 = 2.520 SQM
7	=	1 X 9.858 X 18.848 = 186.189 SQM	7	=	1 X 1.200 X 4.800 = 5.760 SQM
<b>TOTAL = 4637.831 SQM</b>			<b>TOTAL = 801.12 SQM</b>		

TYPICAL REFUGEE FLOOR (18th, 19th, 18th) AREA CALCULATION		
<b>GROSS - A</b>		
1	=	0.3 X 24.884 X 10.338 = 128.114 SQM
2	=	1 X 24.885 X 4.728 = 117.634 SQM
3	=	1 X 11.950 X 18.537 = 221.496 SQM
4	=	1 X 11.950 X 12.048 = 143.938 SQM
5	=	1 X 28.332 X 8.989 = 254.862 SQM
6	=	1 X 28.332 X 18.643 = 528.188 SQM
7	=	1 X 9.858 X 18.848 = 186.189 SQM
<b>TOTAL = 4637.831 SQM</b>		
<b>GROSS - B</b>		
1	=	1 X 0.907 X 4.800 = 4.352 SQM
2	=	1 X 1.200 X 1.200 = 1.440 SQM
3	=	1 X 4.800 X 5.700 = 27.360 SQM
4	=	1 X 4.800 X 4.400 = 21.120 SQM
5	=	1 X 0.900 X 2.700 = 2.430 SQM
6	=	1 X 1.200 X 2.100 = 2.520 SQM
7	=	1 X 1.200 X 4.800 = 5.760 SQM
8	=	1 X 1.700 X 0.750 = 1.275 SQM
9	=	1 X 1.700 X 0.750 = 1.275 SQM
10	=	1 X 1.700 X 0.750 = 1.275 SQM
11	=	1 X 1.700 X 0.750 = 1.275 SQM
12	=	1 X 1.700 X 0.750 = 1.275 SQM
13	=	1 X 1.700 X 0.750 = 1.275 SQM
14	=	1 X 1.700 X 0.750 = 1.275 SQM
15	=	1 X 1.700 X 0.750 = 1.275 SQM
16	=	1 X 1.700 X 0.750 = 1.275 SQM
17	=	1 X 1.700 X 0.750 = 1.275 SQM
18	=	1 X 1.700 X 0.750 = 1.275 SQM
19	=	1 X 1.700 X 0.750 = 1.275 SQM
20	=	1 X 1.700 X 0.750 = 1.275 SQM
21	=	1 X 1.700 X 0.750 = 1.275 SQM
22	=	1 X 1.700 X 0.750 = 1.275 SQM
23	=	1 X 1.700 X 0.750 = 1.275 SQM
24	=	1 X 1.700 X 0.750 = 1.275 SQM
25	=	1 X 1.700 X 0.750 = 1.275 SQM
26	=	1 X 1.700 X 0.750 = 1.275 SQM
27	=	1 X 1.700 X 0.750 = 1.275 SQM
28	=	1 X 1.700 X 0.750 = 1.275 SQM
29	=	1 X 1.700 X 0.750 = 1.275 SQM
30	=	1 X 1.700 X 0.750 = 1.275 SQM
31	=	1 X 1.700 X 0.750 = 1.275 SQM
32	=	1 X 1.700 X 0.750 = 1.275 SQM
33	=	1 X 1.700 X 0.750 = 1.275 SQM
34	=	1 X 1.700 X 0.750 = 1.275 SQM
35	=	1 X 1.700 X 0.750 = 1.275 SQM
36	=	1 X 1.700 X 0.750 = 1.275 SQM
37	=	1 X 1.700 X 0.750 = 1.275 SQM
38	=	1 X 1.700 X 0.750 = 1.275 SQM
39	=	1 X 1.700 X 0.750 = 1.275 SQM
40	=	1 X 1.700 X 0.750 = 1.275 SQM
41	=	1 X 1.700 X 0.750 = 1.275 SQM
42	=	1 X 1.700 X 0.750 = 1.275 SQM
43	=	1 X 1.700 X 0.750 = 1.275 SQM
44	=	1 X 1.700 X 0.750 = 1.275 SQM
45	=	1 X 1.700 X 0.750 = 1.275 SQM
46	=	1 X 1.700 X 0.750 = 1.275 SQM
47	=	1 X 1.700 X 0.750 = 1.275 SQM
48	=	1 X 1.700 X 0.750 = 1.275 SQM
49	=	1 X 1.700 X 0.750 = 1.275 SQM
50	=	1 X 1.700 X 0.750 = 1.275 SQM
51	=	1 X 1.700 X 0.750 = 1.275 SQM
52	=	1 X 1.700 X 0.750 = 1.275 SQM
53	=	1 X 1.700 X 0.750 = 1.275 SQM
54	=	1 X 1.700 X 0.750 = 1.275 SQM
55	=	1 X 1.700 X 0.750 = 1.275 SQM
56	=	1 X 1.700 X 0.750 = 1.275 SQM
57	=	1 X 1.700 X 0.750 = 1.275 SQM
58	=	1 X 1.700 X 0.750 = 1.275 SQM
59	=	1 X 1.700 X 0.750 = 1.275 SQM
60	=	1 X 1.700 X 0.750 = 1.275 SQM
61	=	1 X 1.700 X 0.750 = 1.275 SQM
62	=	1 X 1.700 X 0.750 = 1.275 SQM
63	=	1 X 1.700 X 0.750 = 1.275 SQM
64	=	1 X 1.700 X 0.750 = 1.275 SQM
65	=	1 X 1.700 X 0.750 = 1.275 SQM
66	=	1 X 1.700 X 0.750 = 1.275 SQM
67	=	1 X 1.700 X 0.750 = 1.275 SQM
68	=	1 X 1.700 X 0.750 = 1.275 SQM
69	=	1 X 1.700 X 0.750 = 1.275 SQM
70	=	1 X 1.700 X 0.750 = 1.275 SQM
71	=	1 X 1.700 X 0.750 = 1.275 SQM
72	=	1 X 1.700 X 0.750 = 1.275 SQM
73	=	1 X 1.700 X 0.750 = 1.275 SQM
74	=	1 X 1.700 X 0.750 = 1.275 SQM
75	=	1 X 1.700 X 0.750 = 1.275 SQM
76	=	1 X 1.700 X 0.750 = 1.275 SQM
77	=	1 X 1.700 X 0.750 = 1.275 SQM
78	=	1 X 1.700 X 0.750 = 1.275 SQM
79	=	1 X 1.700 X 0.750 = 1.275 SQM
80	=	1 X 1.700 X 0.750 = 1.275 SQM
81	=	1 X 1.700 X 0.750 = 1.275 SQM
82	=	1 X 1.700 X 0.750 = 1.275 SQM
83	=	1 X 1.700 X 0.750 = 1.275 SQM
84	=	1 X 1.700 X 0.750 = 1.275 SQM
85	=	1 X 1.700 X 0.750 = 1.275 SQM
86	=	1 X 1.700 X 0.750 = 1.275 SQM
87	=	1 X 1.700 X 0.750 = 1.275 SQM
88	=	1 X 1.700 X 0.750 = 1.275 SQM
89	=	1 X 1.700 X 0.750 = 1.275 SQM
90	=	1 X 1.700 X 0.750 = 1.275 SQM
91	=	1 X 1.700 X 0.750 = 1.275 SQM
92	=	1 X 1.700 X 0.750 = 1.275 SQM
93	=	1 X 1.700 X 0.750 = 1.275 SQM
94	=	1 X 1.700 X 0.750 = 1.275 SQM
95	=	1 X 1.700 X 0.750 = 1.275 SQM
96	=	1 X 1.700 X 0.750 = 1.275 SQM
97	=	1 X 1.700 X 0.750 = 1.275 SQM
98	=	1 X 1.700 X 0.750 = 1.275 SQM
99	=	1 X 1.700 X 0.750 = 1.275 SQM
100	=	1 X 1.700 X 0.750 = 1.275 SQM
<b>FAR AREA OF TYPICAL FLOOR (18th, 19th) = 4637.831 SQM</b>		
<b>FAR AREA OF FAR = 398.658 SQM</b>		
<b>REFUGEE AREA IN FAR = 801.12 SQM</b>		
<b>TOTAL FAR = 5829.621 SQM</b>		
<b>REFUGEE AREA COUNTED IN FAR = 223.713 SQM</b>		



GROSS - A			GROSS - B		
1	=	1 X 12.208 X 28.510 = 347.995 SQM	1	=	2 X 5.645 X 5.105 = 58.025 SQM
2	=	1 X 3.400 X 21.198 = 72.073 SQM	2	=	6 X 1.200 X 0.750 = 4.500 SQM
3	=	1 X 5.800 X 29.448 = 170.788 SQM	3	=	4 X 1.425 X 1.400 = 7.980 SQM
4	=	1 X 2.100 X 26.748 = 56.171 SQM	4	=	2 X 2.100 X 4.900 = 20.580 SQM
5	=	1 X 2.100 X 18.250 = 38.325 SQM	5	=	2 X 1.100 X 2.099 = 4.618 SQM
6	=	0.5 X (29.450+24.950) X 18.250 = 506.915 SQM	6	=	4 X 0.900 X 1.200 = 4.320 SQM
7	=	0.5 X (11.189+4.883) X 28.832 = 231.737 SQM	7	=	4 X 2.250 X 1.875 = 16.875 SQM
8	=	1 X 21.734 X 374.477 = 8138.978 SQM	8	=	2 X 2.450 X 2.700 = 13.260 SQM
9	=	1 X 17.230 X 374.477 = 6451.912 SQM	9	=	2 X 2.450 X 2.700 = 13.260 SQM
<b>TOTAL = 3051.508 SQM</b>			<b>TOTAL = 398.658 SQM</b>		