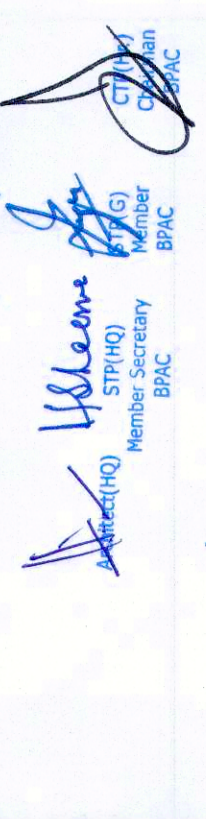
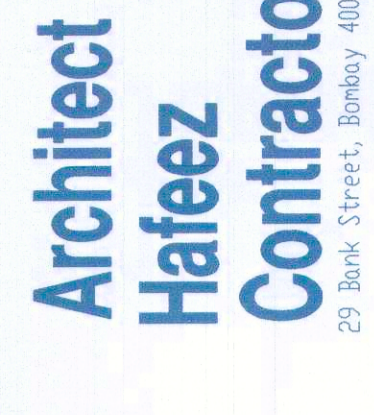
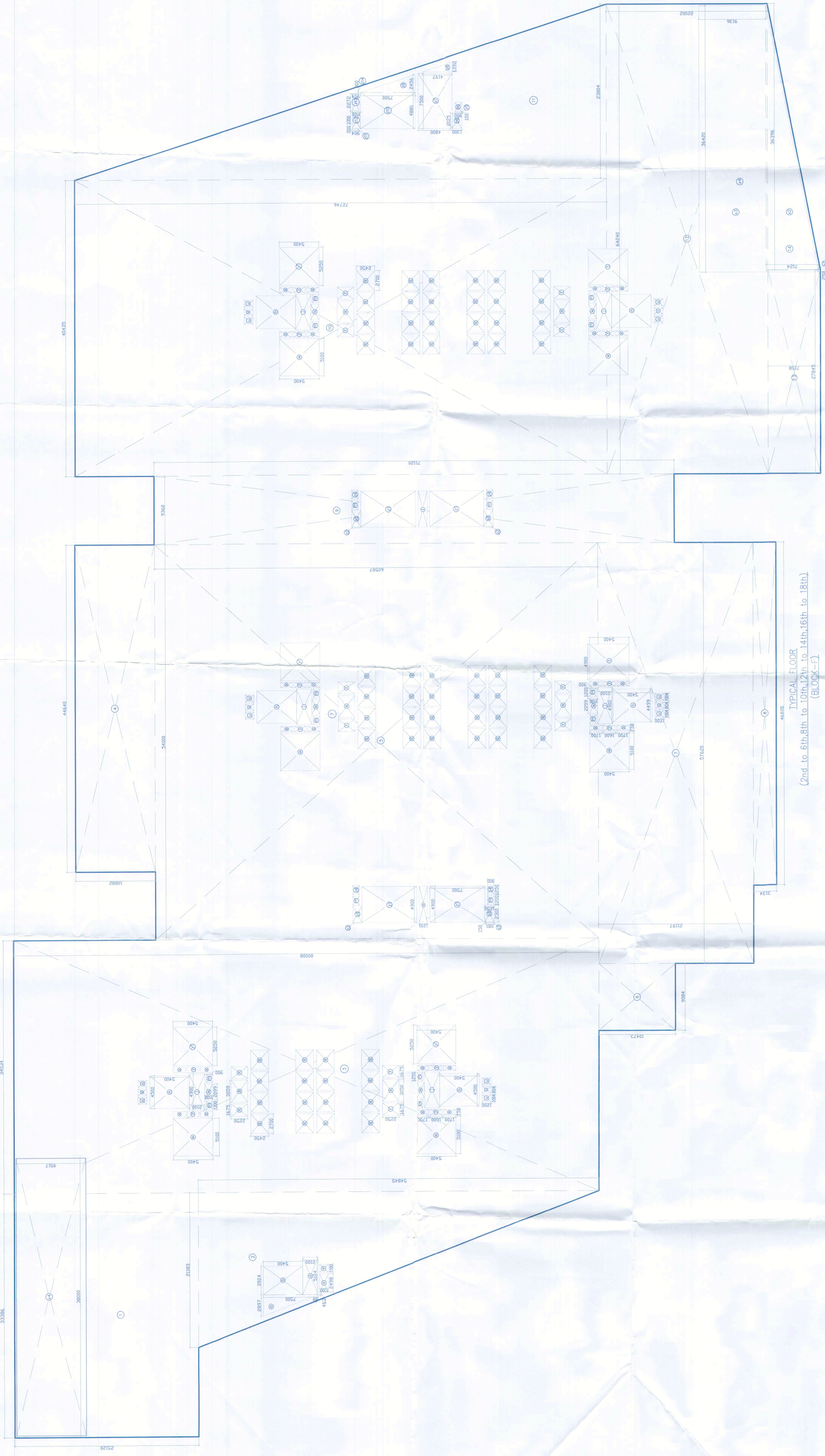


This is a PROVISIONAL BUILDING PLAN for the purpose of inviting objections from the general public.



Architect: Hafeez Contractor, Director, Archt. Firm, New Delhi.

Contractor: RISIMIS ARCHITECTS PVT. LTD.



RISIMIS ARCHITECTS PVT. LTD. 69, Nora Niwas, Bhawani Kunj (Behind D2), Vasant Kunj, New Delhi-110070. Tel:-011-26898616, 26898617 www.rsimis-arch.com

Proposed Building Plans of Building - B and Revised Building Plans of Building - C, D, E, & F in Cyber City under Transit Oriented Development (TOD) Policy for Mix Land Use Colony (70% IT /ITES / 30% Commercial) Measuring 108.55822 Acres in Sector 24, 25 & 25-A, Gurugram Manesar Urban Complex being developed by DLF Cyber City Developers Limited.

Table with 4 columns: Grid, Area, Gross Area, and Net Area. It lists details for various grid blocks (A, B, C, D, E, F) and provides a total summary.

TYPICAL FLOOR (2nd to 6th, 8th to 10th, 12th to 14th, 16th to 18th) (BLOCK-F)



Revision table with columns: Revision, Job No., Date, Deal By, and Checked By. It shows a single revision entry for BF-10 dated 01-04-2021.



OWNER: DLF Cyber City Developers, 10th Floor DLF Gateway Tower, DLF Cyber City, Gurugram, Haryana Pin: 122002

DRAWING TITLE: AREA CALCULATION OF TYPICAL FLOOR (2nd TO 6TH, 8TH TO 10TH, 12TH TO 14TH, 16TH TO 18TH) (BLOCK-F)