

LONGITUDINAL SECTION (THROUGH STAIRCASE AND TOILET)

ELEVATION AT E (TOWARDS 18 M ROAD)

ELEVATION AT F (TOWARDS CENTRAL OPEN SPACE)

AREA CALCULATIONS - SCO TYPE C - CORNER PLOTS

GROUND FLOOR AREA = A
 = (5.00x12.60)
 = 63.00 SqM

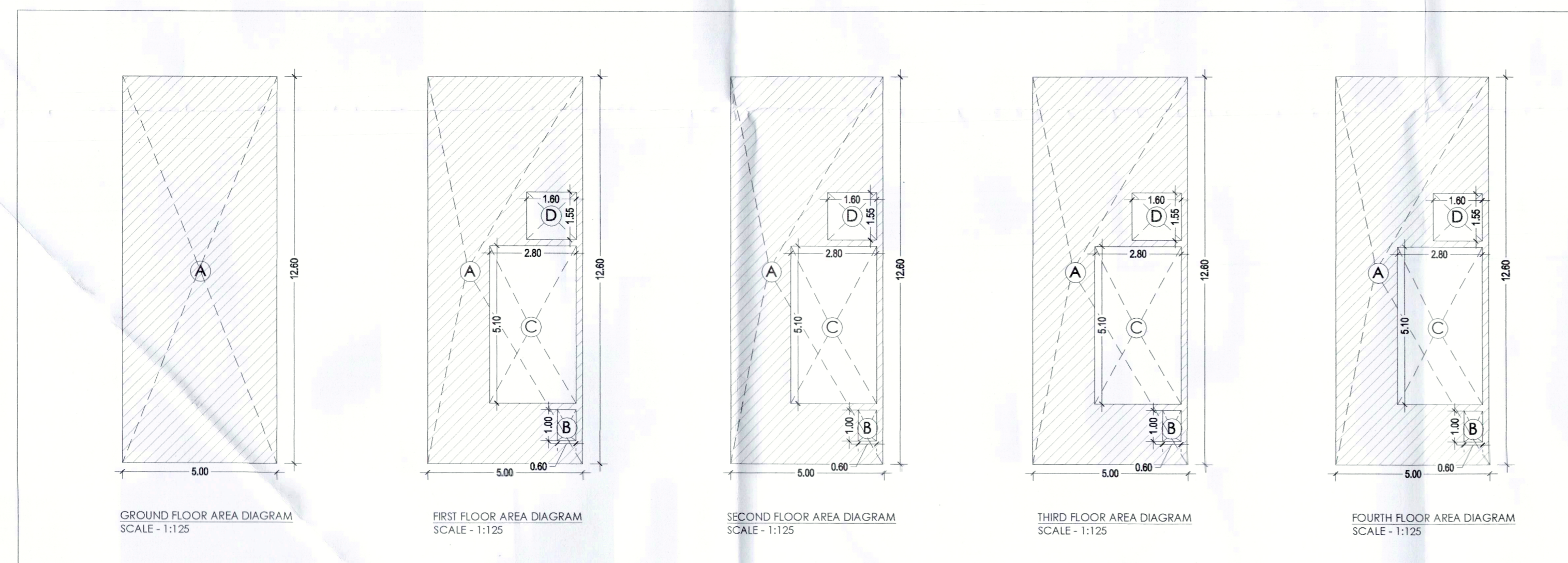
FIRST FLOOR = A - (B + C + D)
 = (5.00x12.60) - [(1.00x0.6) + (5.10x2.80) + (1.55x1.60)]
 = 63.00 - (0.6+14.28+2.48)
 = 63.00 - 17.36
 = 45.64 SqM

SECOND FLOOR = A - (B + C + D)
 = (5.00x12.60) - [(1.00x0.6) + (5.10x2.80) + (1.55x1.60)]
 = 63.00 - (0.6+14.28+2.48)
 = 63.00 - 17.36
 = 45.64 SqM

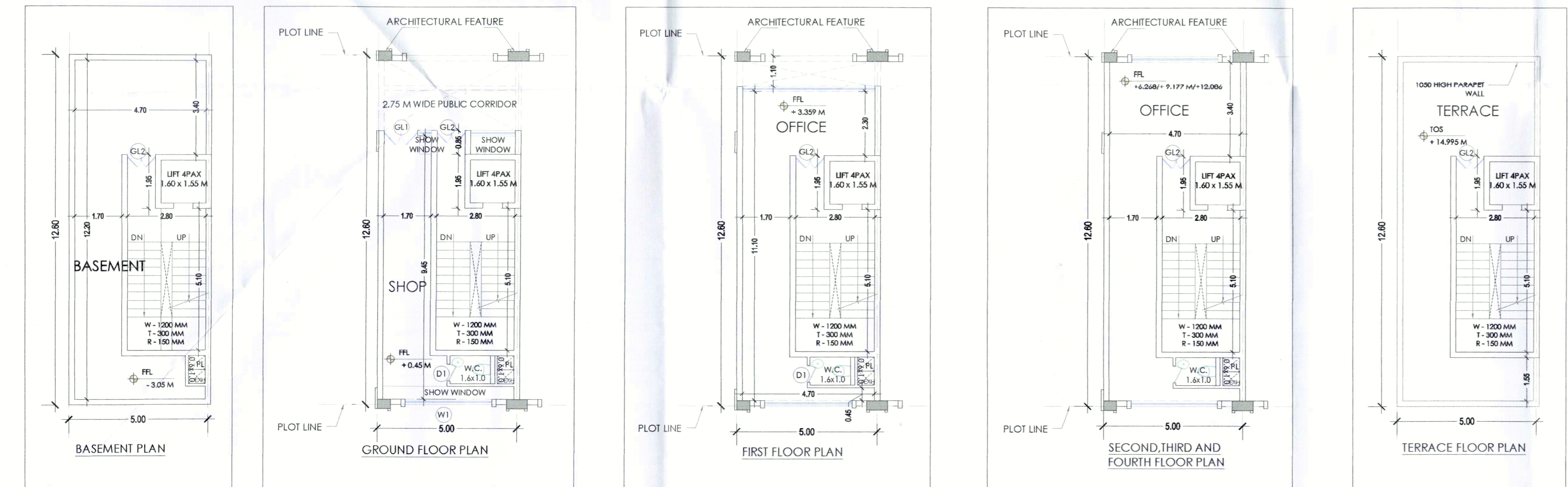
THIRD FLOOR = A - (B + C + D)
 = (5.00x12.60) - [(1.00x0.6) + (5.10x2.80) + (1.55x1.60)]
 = 63.00 - (0.6+14.28+2.48)
 = 63.00 - 17.36
 = 45.64 SqM

FOURTH FLOOR = A - (B + C + D)
 = (5.00x12.60) - [(1.00x0.6) + (5.10x2.80) + (1.55x1.60)]
 = 63.00 - (0.6+14.28+2.48)
 = 63.00 - 17.36
 = 45.64 SqM

TOTAL FAR AREA PER PLOT = 245.56 SqM



SCO TYPE C - SCOs FACING 18M ROAD					
FLOOR	WIDTH (M)	DEPTH (M)	PLOT AREA (SQ. M.)	DEDUCTION (LIFT, STAIRCASE AND SHAFT) (SQ.M.)	FAR AREA (SQ.M.)
GROUND FLOOR	5.00	12.6	63		63
FIRST FLOOR	5.00	12.6	63	17.36	45.64
SECOND FLOOR	5.00	12.6	63	17.36	45.64
THIRD FLOOR	5.00	12.6	63	17.36	45.64
FOURTH FLOOR	5.00	12.6	63	17.36	45.64
FAR PER PLOT FOR SCOs TOWARDS CLUB					245.56
TOTAL FAR OF THE PLOTS (2 NOS.)					491.12



FLOOR PLANS
 SCOs TOWARDS 18 M ROAD - CORNER PLOTS C01, C11

NOTES

- Dimensions are not to be scaled.
- The contractor shall verify all dimensions, details, specifications & site conditions & shall report any error, omission and/or anomaly to the Campus Designer before commencement of work.
- For construction purposes, the dimensions shall not be measured directly of the drawings. The drawings shall not be used for construction until they are issued for construction.
- These drawings are to be read in co-ordination with HVAC, Electrical, plumbing drawings & all relevant sections of specifications.
- All shop drawings should be provided to the Campus Designer for approve

AREA CALCULATION

GROUND FLOOR AREA = A
 = (7.00x18.00)
 = 126.00 SqM

FIRST FLOOR = A - (B + C + D)
 = (7.00x18.00) - [(1.20x0.6) + (5.10x2.80) + (1.55x1.60)]



DLF HOMES PANCHKULA PVT. LTD.

PROJECT TITLE
 Standard Design for Commercial Shopping (SCO & Booth). Plot area 2.11 Acres in residential plotted colony measuring 175.593 acres, being developed by DLF Homes Panchkula Pvt. Ltd. At village Bhagwanpur, Islamabad, Sector 3, Pinjore Kalka urban C omplex.
SCO & BOOTH

ISSUES		
DATE	REVISION	DESCRIPTION

ARCHITECT: ARJUN ASSOCIATES PVT. LTD.
 A-15, Pampoh Enclave, G K 1
 New Delhi 110046
 Phone: 011-26442050

STRUCTURE CONSULTANTS:

MEP CONSULTANTS:

Authorized Signatory: *[Signature]*
 Architect's Signature: *[Signature]*

SHEET TITLE:
SCO TYPE C - CORNER PLOTS - TOWARDS 18 M ROAD PLAN, AREA DIAGRAM, SECTION, ELEVATIONS

Document Release Type
SUBMISSION DRAWING

Job No. _____

Scale: 1:125 ON A1 SHEET

Date: 05 OCT, 2021

Drawn by: SD

Checked by: Jsk

Job No. _____

DRAWING NUMBER: **AR 302**

Revision No. _____

AUTHORITY:

DRG. NO.:- DTCP 7957 (VII) DATED:- 14/10/2021

(AJIT SINGH) JD (HQ)
 (HITENDER SINGH) ARCHITECT (HQ)
 (HITESH SHARMA) STP (HQ) M
 (P. P. SINGH) CIP (HR.)
 K. MAKRAND PANDURANG (AS) DTCP (HR.)